

THINK IAS

JOIN SAMYAK

Samyak
An Institute For Civil Services

DAILY
CURRENT **नामा**

For UPSC CSE

18, 19 and 20 August

 **9875170111**

 **SAMYAK IAS, NEAR RIDDHI-SIDDHI, JAIPUR**

Geography

1. Shiveluch volcano erupts after 7.0 magnitude earthquake strikes off eastern Russian coast - The Hindu
2. Blue moon - The Hindu

Society

3. Do doctors need a Central protection Act? - The Hindu
4. Sexual abuse rampant in Malayalam film industry, says Hema Committee report - The Hindu

Polity

5. Lok Sabha Speaker constitutes six new parliamentary panels - The Hindu
6. Lateral entry into bureaucracy - Indian Express

World Affairs

7. Chinese, Philippine ships collide in South China sea - The Hindu
8. Could Hasina be extradited? - Indian Express
9. In landmark US antitrust ruling against Google, important lessons for India - Indian Express

Economy

10. Central Consumer Protection Authority (CCPA) - The Hindu
11. A change in India's power export rules - The Hindu
12. National Coal Index - The Hindu
13. India's GI-tagged agro-product Figs juice exported first time to Poland - Indian Express
14. India Australia RISE Accelerator calls for Start-ups and MSMEs in Climate Smart Agritech - PIB

Environment

15. Clean Ganga mission - The Hindu

- 16. Banni grasslands of Kachchh - The Hindu
- 17. Gross Environment Product Index - PIB
- 18. Ranthambore Tiger Reserve (RTR) - Indian Express

Sci and Tech

- 19. Zoopharmacognosy - The Hindu
- 20. fMRI - The Hindu
- 21. How a foreign covert group was using ChatGPT to influence U.S. elections - The Hindu
- 22. Dark patterns - The Hindu
- 23. HAYFLICK LIMIT - Indian Express

Defence

- 24. Army fields tactical 'assault canine' Zac at bilateral exercise in Sri Lanka - The Hindu
- 25. INS Shivalik reaches Guam, an island territory of the U.S. - The Hindu
- 26. DRDO hands over Authority Holding Sealed Particulars of 'Nipun' munition to Directorate General of Quality Assurance - PIB

Miscellaneous

- 27. Ladki Bahin Yojana - The Hindu
- 28. Rakesh Pal - The Hindu
- 29. General S. Padmanabhan - The Hindu
- 30. National Film Awards - The Hindu

Geography

1. Shiveluch volcano erupts after 7.0 magnitude earthquake strikes off eastern Russian coast - The Hindu

Relevance: Salient features of World's Physical Geography

Context

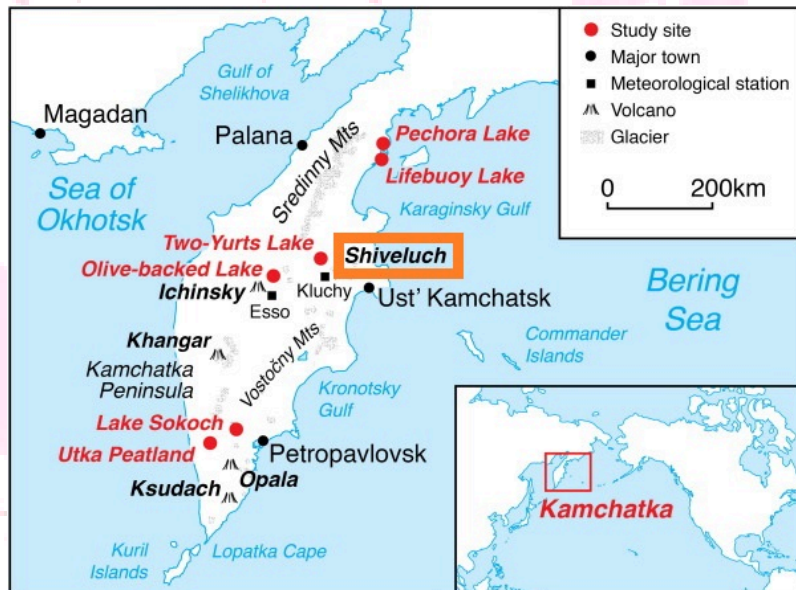
Shiveluch volcano in Russia erupted after a 7.0 magnitude earthquake that struck off the eastern coast of the country.

Shiveluch Volcano

- **Location:** Around 280 miles from Petropavlovsk-Kamchatsky, in Russia's Kamchatka.
- **Size and eruption:** One of the largest and most active volcanoes in Kamchatka, having erupted at least 60 times in the past 10,000 years.
- **2 parts:**
 - **Old Shiveluch:** Tops 3,283 metres (10,771 ft),
 - **Young Shiveluch:** A smaller, 2,800-metre peak protruding from its side.

Kamchatka Peninsula

- **Location:** Far eastern Russia between the Sea of Okhotsk (west) and the Pacific Ocean and Bering Sea (east).
- **Significance:** One of the world's most concentrated areas of geothermal activity, with about 30 active volcanoes.
- **Size:** About 1,200 km long north-south & 480 km across at its widest.



2. Blue moon - The Hindu

Relevance: Important Geophysical Phenomenon

- **Meaning:** Second full moon in a month. Because new moon to new moon cycle lasts 29.5 days, the full moon at some time occurs at the beginning of a month, and there are days left still for another full cycle to be completed. Such a month, in which the full moon is seen on the 1st or 2nd, will have a second full moon on the 30th or 31st.
- **Occurrence:** It happens every two or three years.
- **Super blue moon:** It combines a supermoon and a blue moon. A supermoon occurs when the moon aligns closely with Earth during its orbit, making it appear larger and brighter.

THE RAREST FULL MOONS

 <p>Supermoon</p> <p>Supermoons look ~30% larger than regular full moons. They happen when the moon is both full and is also orbiting within 90% of perigee (the part of the Moon's orbit closest to Earth).</p>	 <p>Blood Moon</p> <p>Occurs during a total lunar eclipse when the Earth is between moon and sun. During this time, the Moon is lit only by the edges of the Earth's atmosphere which scatters blue but not red light.</p>	 <p>Super Flower Blood Moon</p> <p>The Flower Moon is the second full moon of spring and May's full moon. When it also meets both "supermoon" and "blood moon" criteria, it becomes the Super Flower Blood Moon.</p>	 <p>Ring of Fire Eclipse</p> <p>Occurs during a solar eclipse when the moon is between Earth and Sun and when the Moon is also further away in its orbit so that it only partially blocks the Sun, leaving a "ring of fire."</p>
 <p>Micro Moon</p> <p>A full Moon that happens at the same time that the Moon is furthest from Earth in its orbit. This makes the Moon look smaller and dimmer than usual.</p>	 <p>Blue Moon</p> <p>The second full moon in a month. Full moons are 29 days apart, but most months are 30-31 days, so sometimes two full moons will happen within the same month.</p>	 <p>Harvest Moon</p> <p>The full, bright Moon that happens closest to the start of autumn. It got its name because the extra light was used by farmers to harvest crops for fall.</p>	 <p>Cold Moon</p> <p>Also called "The Long Night Moon," this is the full moon that occurs in December closest to the winter solstice - the longest night of the year.</p>

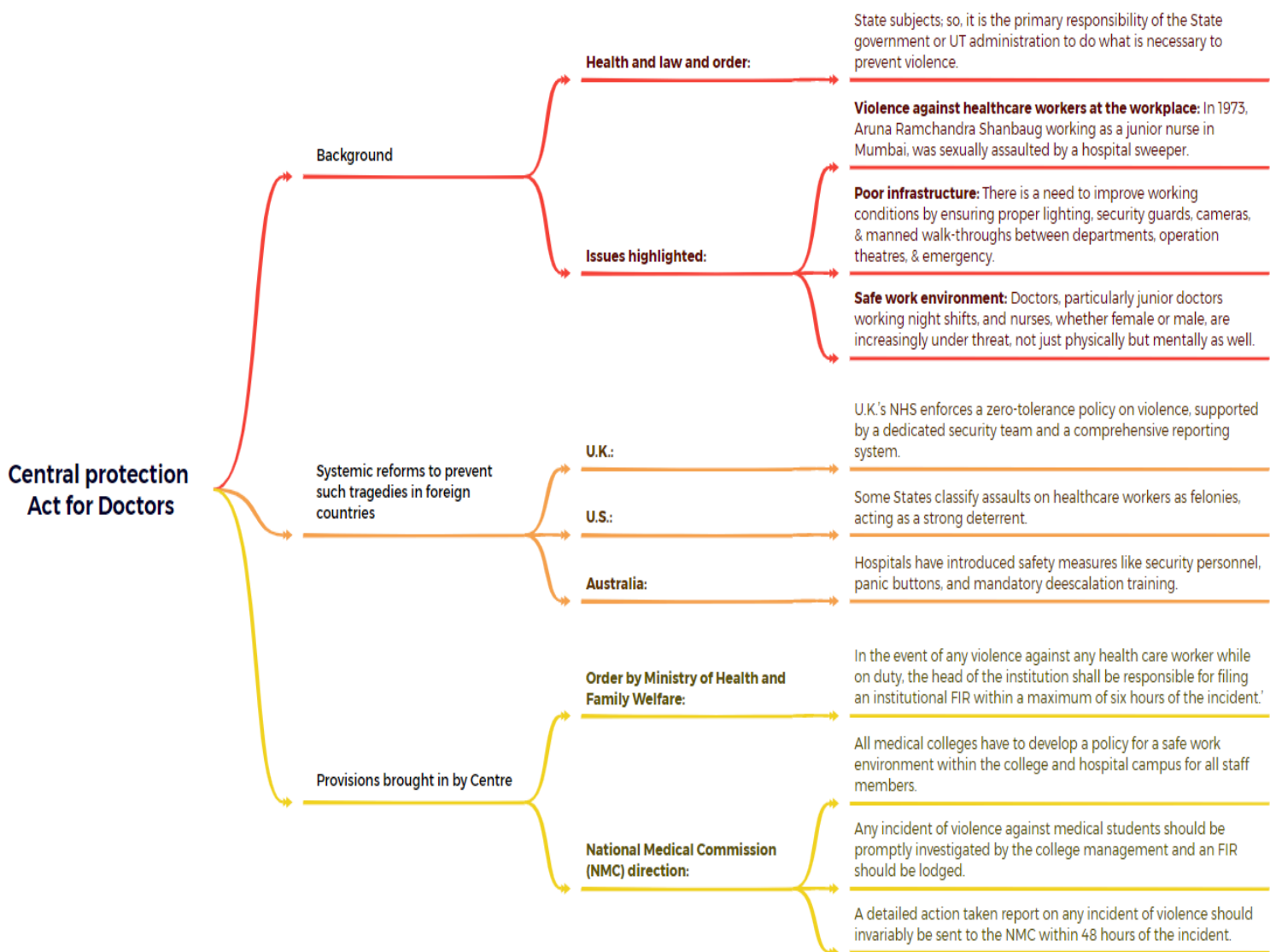
Society

3. Do doctors need a Central protection Act? - The Hindu

Relevance: Salient features of Indian Society

Context

Resident doctors across India are on strike demanding laws that ensure their safety while on duty. This follows the rape and murder of a young doctor at R.G. Kar Medical College and Hospital in Kolkata recently.



National Medical Commission

- **About:** A statutory body established under the National Medical Commission Act, 2019 which replaced the erstwhile Medical Council of India (MCI) which was established in 1934.

- **Function:** India's top regulator of medical education and practice.

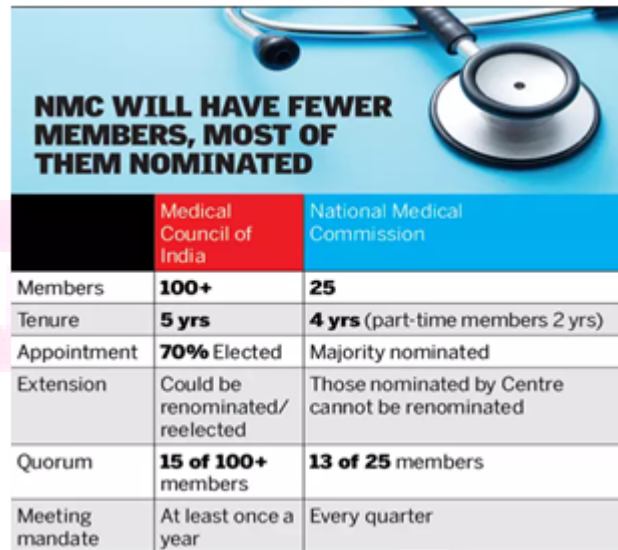
- **Composition:**

- **Members:** A 25-member body, majorly nominated by the Central government.
- **Part time members:** 11 part-time members representing states or state medical councils.

- **Tenure:** 4 years (except for part-time members whose tenure is two years).

- **Appointment:** The NMC chairpersons and other members, nominated by the Central government, cannot be renominated.

- **Decision making:** Any decision requires approval of the majority (minimum 13 out of 25) of the Commission.



	Medical Council of India	National Medical Commission
Members	100+	25
Tenure	5 yrs	4 yrs (part-time members 2 yrs)
Appointment	70% Elected	Majority nominated
Extension	Could be renominated/reelected	Those nominated by Centre cannot be renominated
Quorum	15 of 100+ members	13 of 25 members
Meeting mandate	At least once a year	Every quarter

4. Sexual abuse rampant in Malayalam filmworld, says Hema Committee report - The Hindu

Relevance: Salient features of Indian Society

Context

The publication of the Justice Hema committee report on issues faced by women in Malayalam cinema warrants a special investigation into allegations of sexual harassment.

About the report

- **Prevalence of casting couch:** The report confirms that the casting couch is prevalent in Malayalam cinema, typically managed by the respective film's production controller or the person offering the role.
- **Sexual favours:** To normalise such harassment, women are often told that certain well-known and successful female actors gained their reputation and fame only by obeying such demands.
- **Prejudice:** Many men assume that women willing to perform intimate scenes on-screen are also willing to do so off-set, reflecting a lack of professionalism and understanding of the craft among men in the industry.
- **Unsafe environment:** Women often feel unsafe going to work alone and usually go to sets only with parents or close relatives.

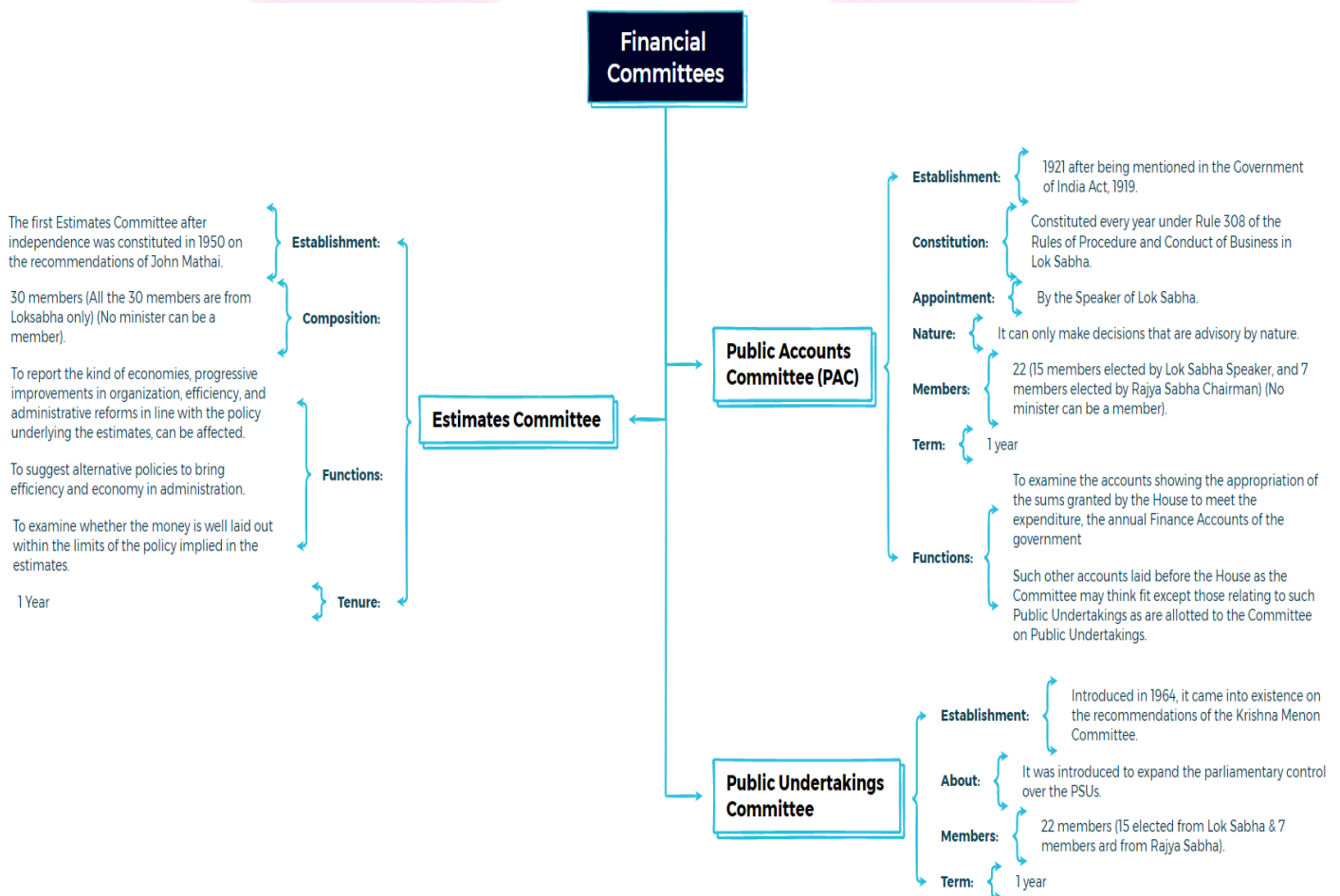
Polity

5. Lok Sabha Speaker constitutes six new parliamentary panels - The Hindu

Relevance: Parliament and State Legislatures—Structure, Functioning, Conduct of Business, Powers & Privileges and Issues Arising out of these

Context

Lok Sabha Speaker recently constituted six new Parliamentary Committees.



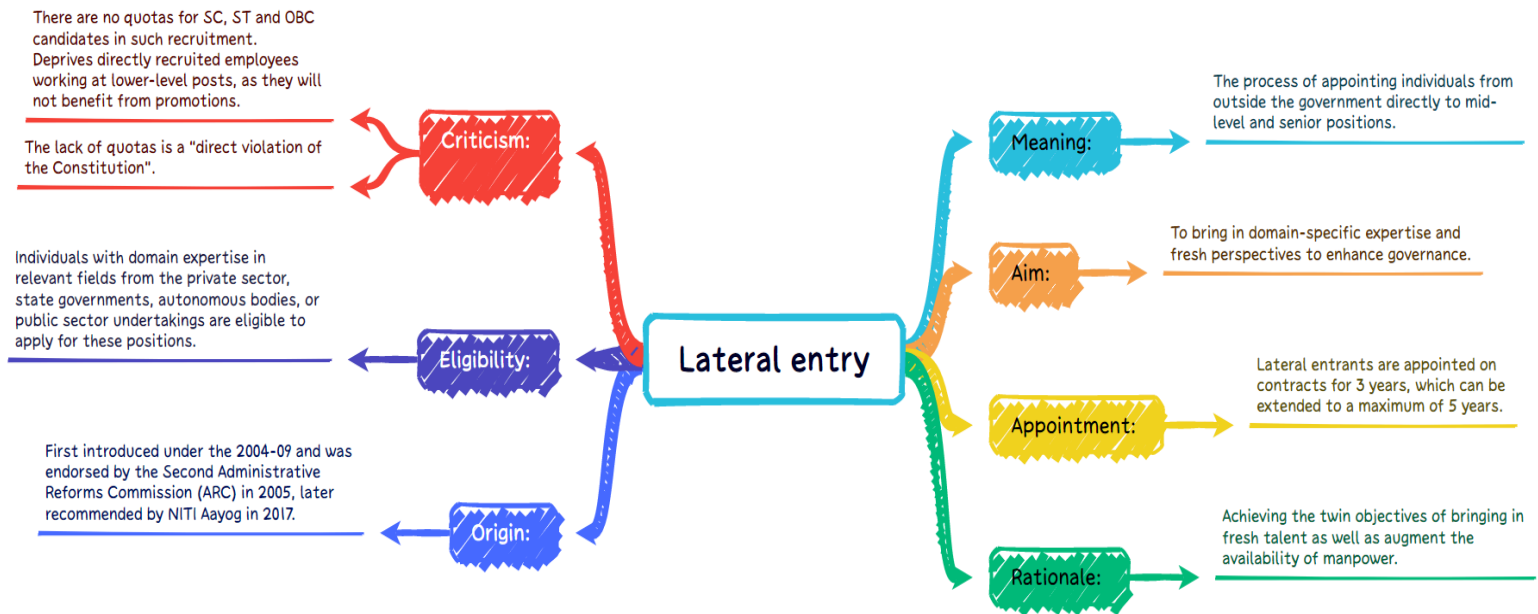
6. Lateral entry into bureaucracy - Indian Express

Relevance: Appointment to various Constitutional Posts, Powers, Functions and Responsibilities of various Constitutional Bodies

Context

The Union Public Service Commission (UPSC) recently issued an advertisement seeking applications for “talented and motivated Indian nationals for Lateral Recruitment” to the posts of Joint Secretary, Director, and Deputy Secretary in 24 ministries of the Union government.

Lateral entry



Why are there no quotas in lateral recruitment?

- **"13-point roster" policy:** It establishes a method for determining a candidate's placement on a list of job openings by calculating their group's quota percentage (SC, ST, OBC, and EWS) as a fraction of one hundred.
 - Since each lateral entry position is considered a "Single Post," the reservation system does not apply, allowing these appointments to be made without following reservation guidelines.

Arguments in Favour of and against Lateral Entry

Arguments in Favour of Lateral Entry	Arguments against Lateral Entry
<ul style="list-style-type: none"> ● Expertise: Lateral entry allows the government to recruit specialists with expertise in various areas. ● Innovation: Lateral recruits can bring valuable experiences to enhance governance. ● Filling the shortage: As there is a shortage of about 1500 IAS officers, lateral entry can help bridge it. ● Changing Work Culture: As the Govt sector is criticised for red-tapism, rule-book bureaucracy, and status-quoist, lateral entry can change it. ● Participation: Lateral entry provides stakeholders such as the private sector and non-profits an opportunity to participate in the governance process. 	<ul style="list-style-type: none"> ● Short Tenure: The tenure of 3 years is insufficient for newcomers to fully acclimate to the complex governance systems. ● Maintaining Neutrality: Bringing in individuals from diverse backgrounds can challenge neutrality due to conflicts of interest. ● Permanent Officers' Morale: Appointing lateral entrants could create a divide between them and permanent officers. ● Dilution of Merit-Based Recruitment: If not conducted transparently, it could lead to perceptions of favouritism or nepotism in the selection process.

World Affairs

7. Chinese, Philippine ships collide in South China sea - The Hindu

Relevance: Effect of Policies and Politics of Developed and Developing Countries on India's interests

Context

China's coast guard accused the Philippines of deliberately crashing one of its ships into a Chinese vessel recently near Sabina Shoal, a new flashpoint in the increasingly alarming territorial disputes between the countries in the South China Sea.

Sabina Shoal

- **Location:** Lies about 140 kilometers west of the Philippines' western island province of Palawan.
- **Strategic location:** Sabina lies near the Philippine-occupied Second Thomas Shoal, which has been the scene of confrontations between China and Philippines.



South China Sea (SCS) (Prelims Special)

- **About:** An arm of western Pacific Ocean in Southeast Asia.
- **Location:** South of China, east & south of Vietnam, west of the Philippines and north of the island of Borneo.
- **Bordering states & territories:** People's Republic of China, Republic of China (Taiwan), the Philippines, Malaysia, Brunei, Indonesia, Singapore and Vietnam.

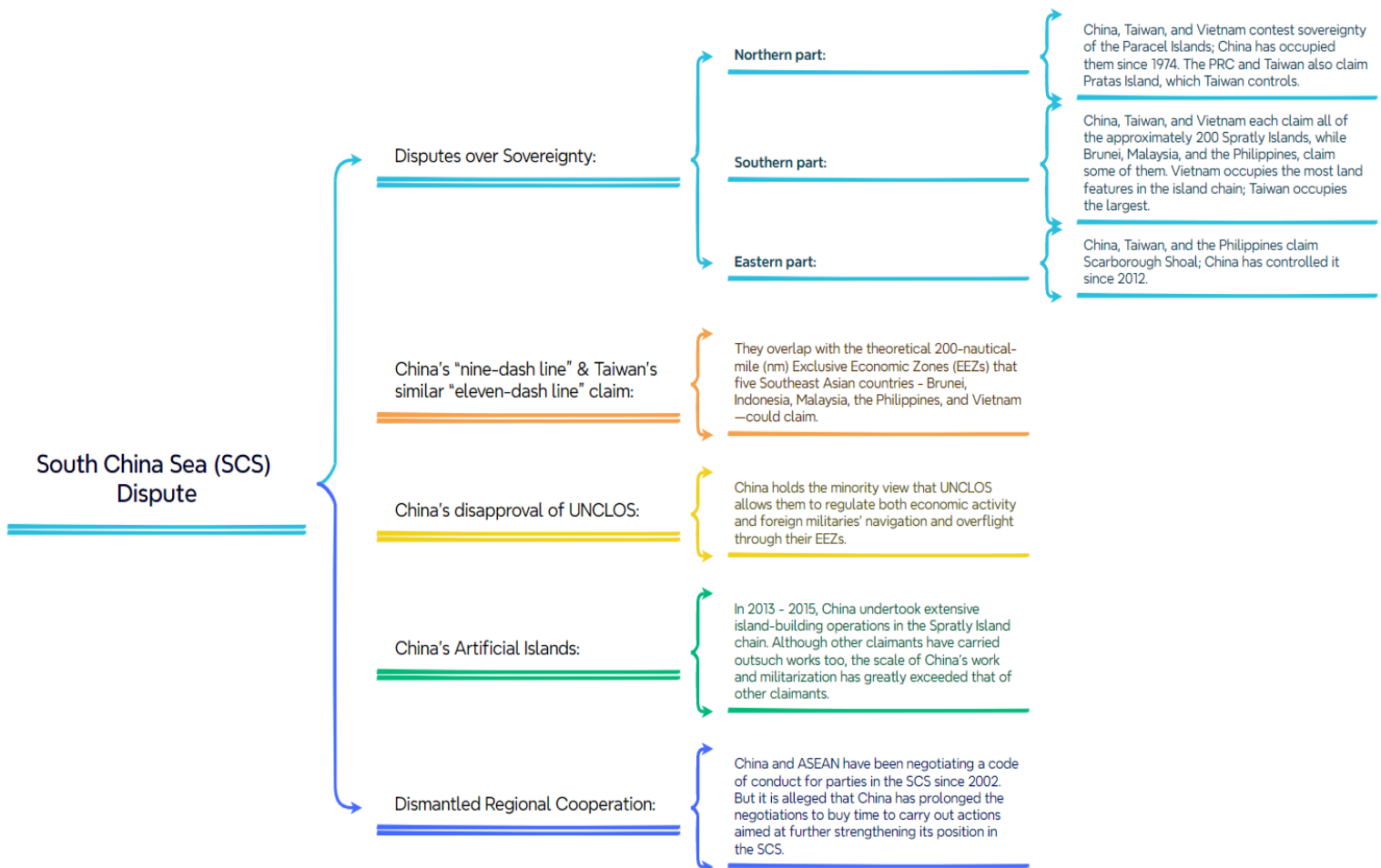


- **Straits and water channels:** Connected by Taiwan Strait with East China Sea and by Luzon Strait with the Philippine Sea. It is a connecting link between Indian Ocean and Pacific Ocean, through Strait of Malacca.
- **Major islands:** The Paracel Islands, the Spratly Islands and the Scarborough Shoal.
- **Significance:**
 - **Trade:** $\frac{1}{3}$ rd of the global shipping passes through it, carrying trillions of trade.
 - **Biodiversity:** It has one-third of the entire world's marine biodiversity and contains lucrative fisheries providing food security to the Southeast Asian nations.
 - **Energy:** It is believed to have huge oil and gas reserves beneath its seabed.

Scarborough Shoal (Prelims Special)

- **About:** A series of small rocks and islands formed into a triangle shape in the South China Sea, located some 220 kilometers from the Philippines.
- **A productive fishing area:** It is rich in marine life, and contains many commercially valuable shellfish and sea cucumbers.
- **Control:** Effectively controlled by China, which has maintained a constant coast guard presence at the feature since 2012.

South China Sea (SCS) Dispute (Mains Analysis)



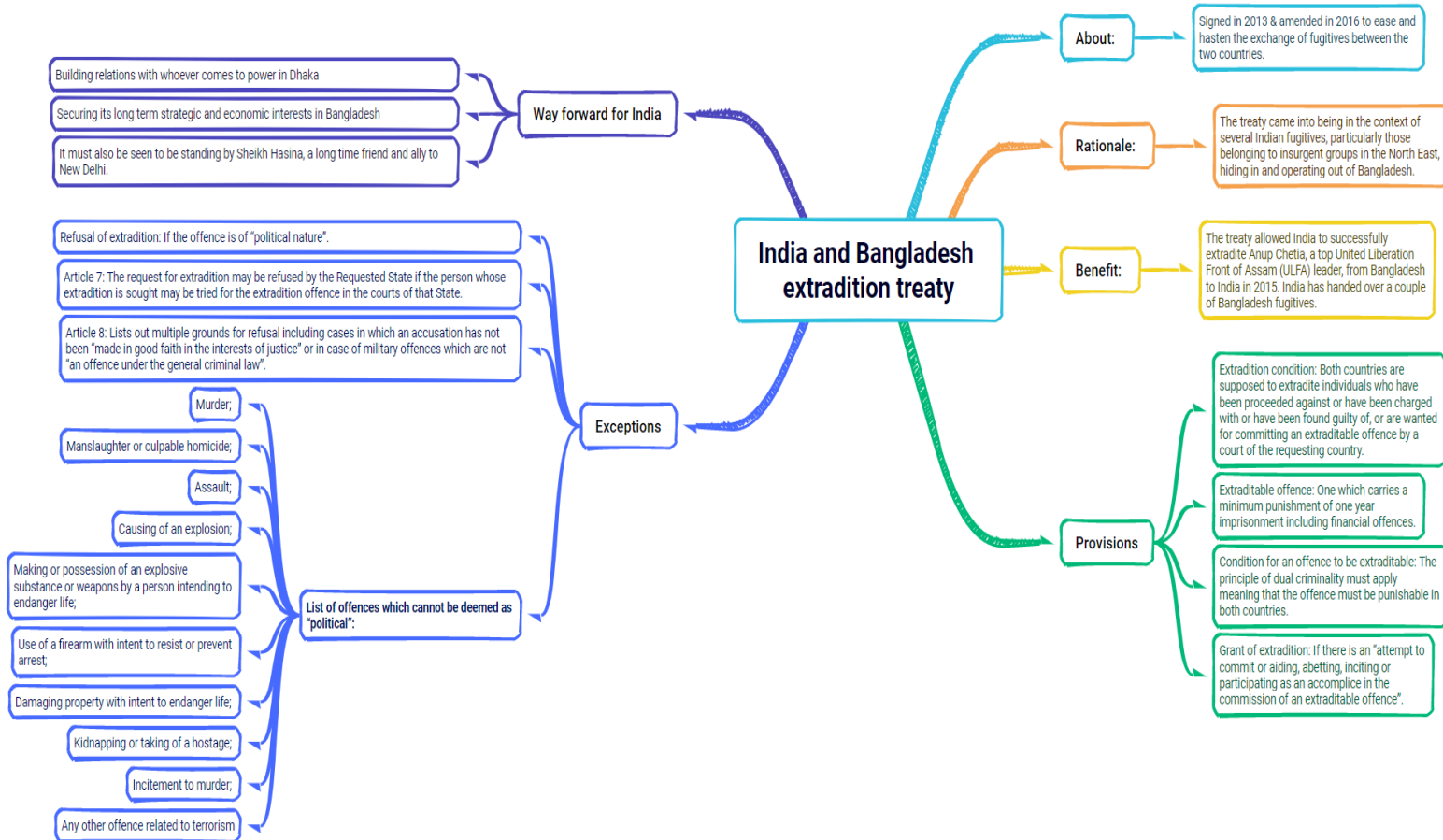
8. Could Hasina be extradited? - Indian Express

Relevance: India and its Neighborhood- Relations

Context

With former Bangladesh Prime Minister facing multiple criminal cases back at home, it is likely that India's eastern neighbour may push for her extradition.

India and Bangladesh extradition treaty



9. In landmark US antitrust ruling against Google, important lessons for India - Indian Express

Relevance: Effect of Policies and Politics of Developed and Developing Countries on India's interests, Indian Diaspora

Context

The US Justice Department recently sued Google for illegally cementing its dominance. In India too, Google has faced allegations of anti-competitive practices.

Recent judgement

- **Google's position as the "default" search engine:** This "default distribution" a "major, largely unseen advantage over its rivals". Because

users simply stick to searching with the default, Google receives billions of queries every day through those access points.

- **Limits itself to the “relevant geographic market” of the United States:** The market conditions for default browsers in India could weigh on the scales differently.

Earlier judgements against Google

- **October 2022:** Competition Commission of India (CCI) imposed a monetary penalty on Google because of the mandatory pre-installation of the Google Mobile Suite on Android devices with no option to uninstall the apps.

Issues faced by other competitors from Google strategy

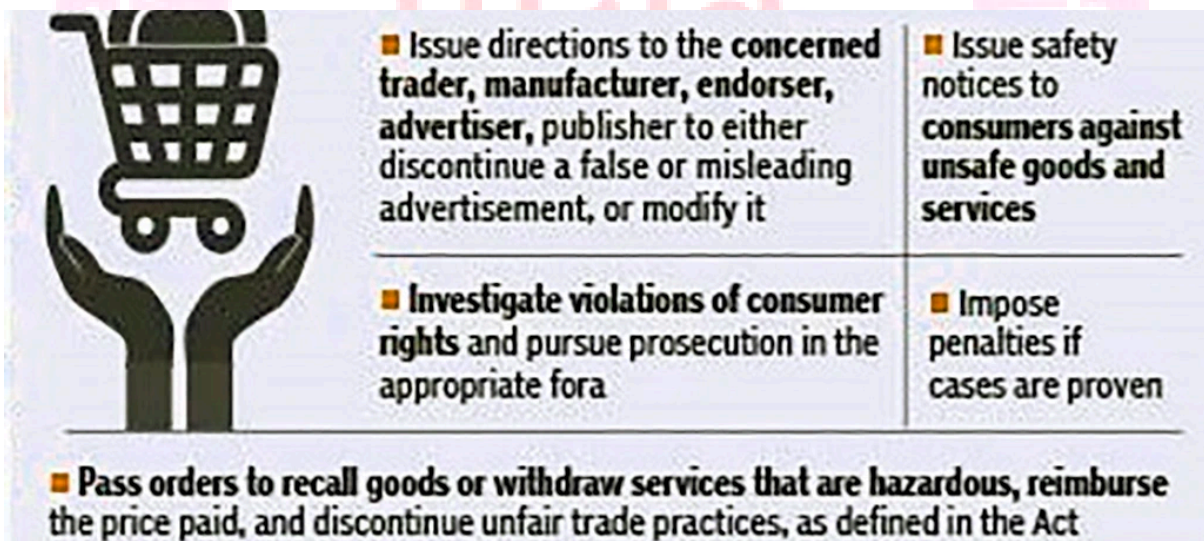
- **Passing the barriers:** First, the new entrant would have to surmount the entry barriers to create a search engine of comparable quality to Google. These barriers would include high capital costs, access to distribution channels, and brand recognition.
- **Building an ads platform** that could monetise search on par with Google.
- **Huge investments:** Offsetting any revenue shortfall that might arise from reduced query volume (as some users would elect to stay with Google) or from inferior ad monetisation (as fewer users could mean fewer advertisers and less profitable ad auctions, notwithstanding the quality of its delivery of ads).

Economy

10. Central Consumer Protection Authority (CCPA) - The Hindu

Relevance: Indian Economy and issues

- **About:** A statutory body established under the provisions of Consumer Protection Act, 2019 on 24th July, 2020.
- **Aim:** To promote, protect and enforce the rights of consumers as a class.
- **Nodal Ministry:** Ministry of Consumer Affairs, Food & Public Distribution.
- **Composition:**
 - **Chief Commissioner:** Head
 - **2 other commissioners:**
 - One will deal with matters relating to goods
 - Other will look into cases relating to services.
- **Powers:**



11. A change in India's power export rules - The Hindu

Relevance: Infrastructure: Energy, Ports, Roads, Airports, Railways etc

Context

Adani Power's plant in Godda (Jharkhand) supplies its entire generated power to Bangladesh. In a statement, a spokesperson of Adani Power emphasised their commitment of supplying electricity to Bangladesh, stating that the amendment does not affect its existing contract.

Godda project

- **About:** Supplies 1,496-megawatt net capacity power to Bangladesh from the ultra super-critical thermal power plant in Godda.

- **Agreement:** This is facilitated under a Power Purchase Agreement (PPA) entered with the Bangladesh Power Development Board (BPDB) in November 2017 for a period of 25 years.
- **Significance:** India's first transnational power project that supplies all the power generated to another nation.
- **Criticism:**
 - **Coal imported from the Carmichael mine in Australia into India:** It allowed to "push the high cost of importing and transporting coal into India, plus the cost of transmitting the electricity across the border onto Bangladesh.
 - **High capacity and maintenance charges:** It was reported "very high" by industry standards.

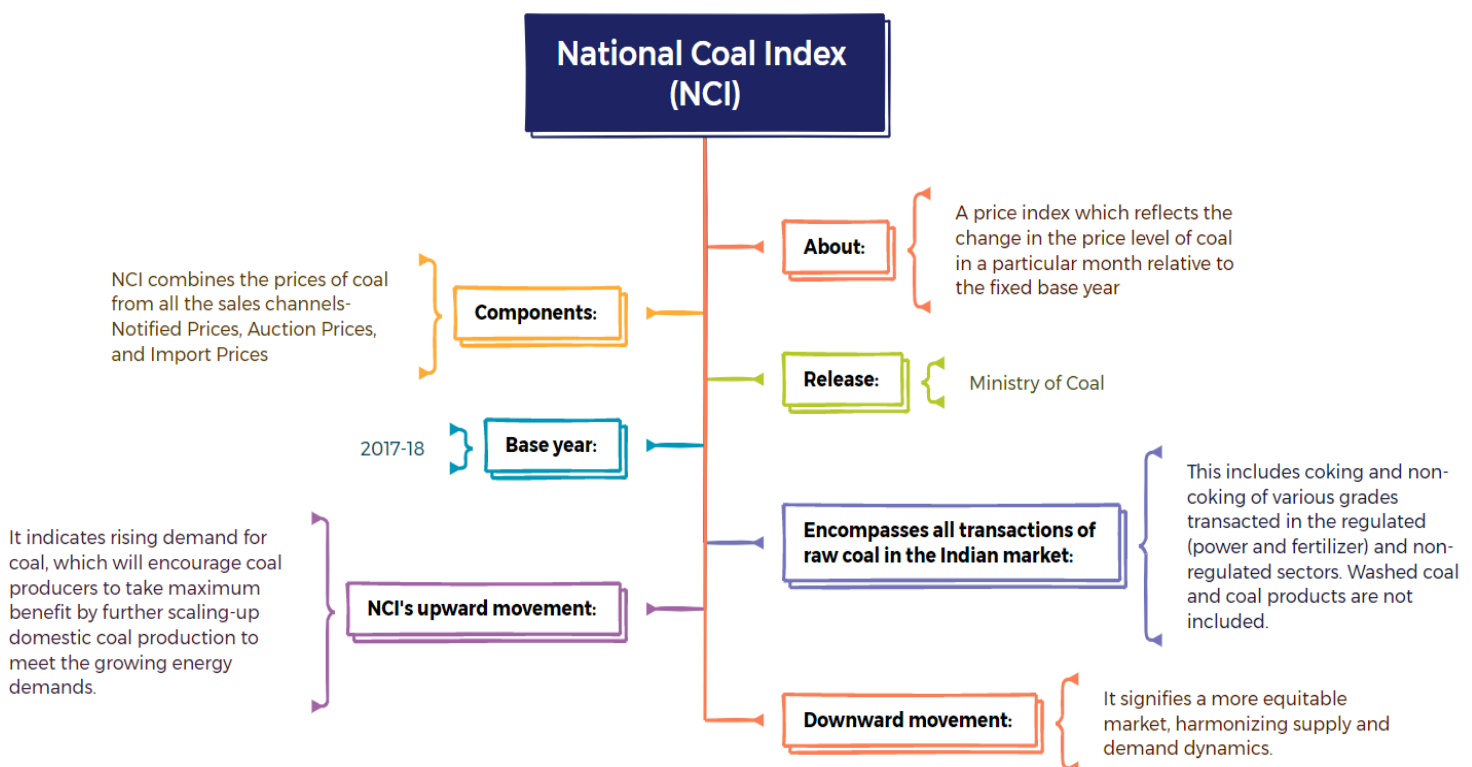
12. National Coal Index - The Hindu

Relevance: Infrastructure: Energy, Ports, Roads, Airports, Railways etc

Context

The National Coal Index (NCI) has shown a significant decline of 3.48% in June 2024 at 142.13 points on a provisional basis compared to 147.25 points in June 2023, pointing towards sufficient availability of coal at cheaper prices in the domestic market.

National Coal Index (NCI)



13. India's GI-tagged agro-product Figs juice exported first time to Poland - Indian Express

Relevance: Indian Economy

Context

In order to get India's agro-products on the global stage, the Agricultural and Processed Food Products Export Development Authority (APEDA) facilitated the export of India's first ready-to-drink fig juice, made from GI-tagged Purandar figs, to Poland. Earlier in 2022, the export was made to Germany, too.

Purandar figs (GI Tag in 2016)

- **Cultivation:** In Purandar taluk in Pune district, Maharashtra.
- **Agro-climatic factors:** Dry weather, hilly slopes, well drained medium land are essential for Purandar Fig cultivation.
- **Soil type:** Red and black soil having high Calcium and Potassium content responsible for the violet colour and size of the fig.

Agricultural and Processed Food Products Export Development Authority (APEDA)



14. India Australia RISE Accelerator calls for Start-ups and MSMEs in Climate Smart Agritech - PIB

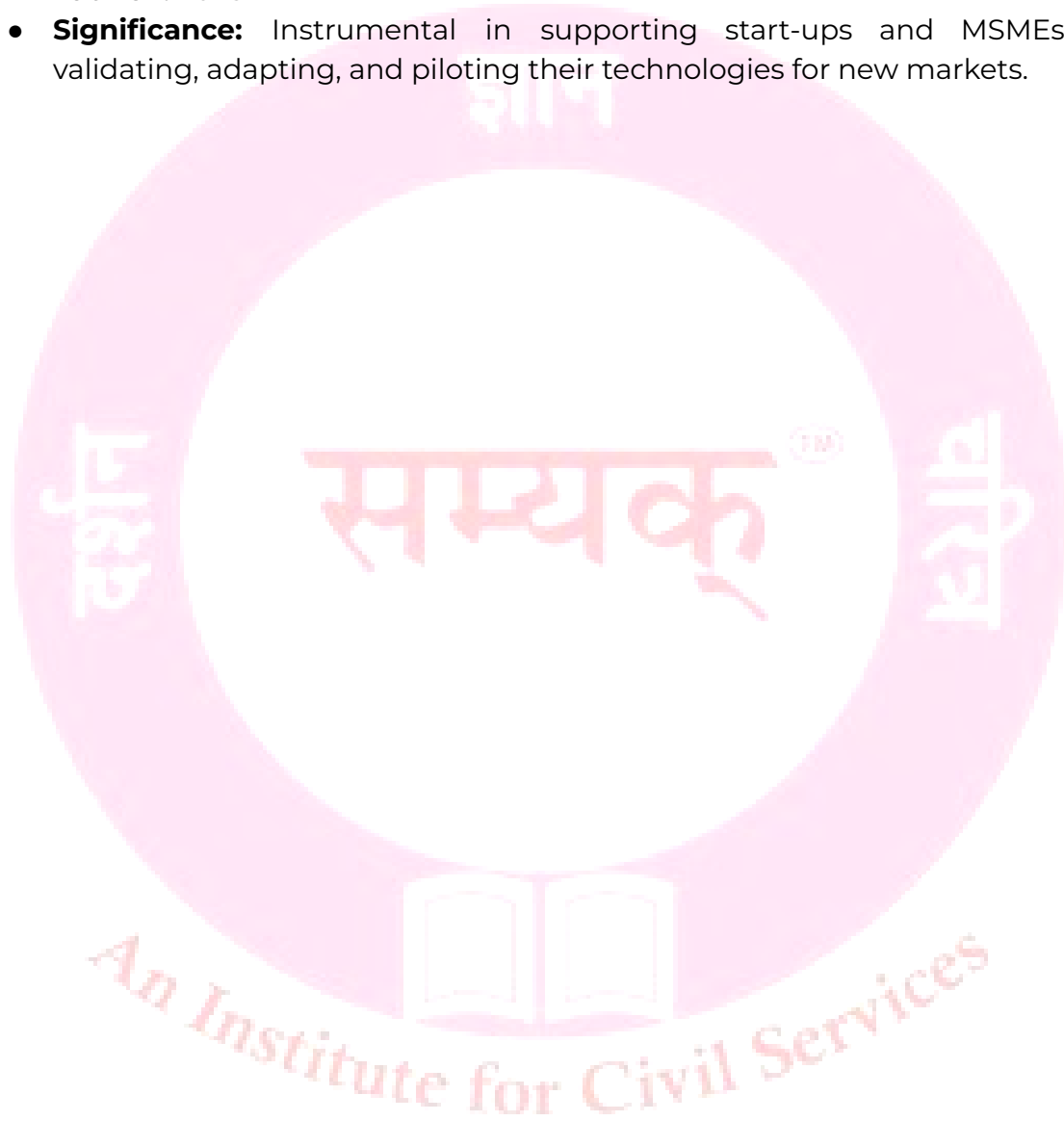
Relevance: Indian Economy

Context

The Atal Innovation Mission - in partnership with CSIRO, Australia - is inviting applications from start-ups and MSMEs from India and Australia for the Climate Smart Agritech cohort of the India Australia Rapid Innovation and Start-up Expansion (RISE) Accelerator.

Rapid Innovation and Start-up Expansion (RISE) Accelerator

- **About:** A bilateral program led by CSIRO and the Atal Innovation Mission (AIM), NITI Aayog.
- **Objective:** It addresses India and Australia's shared challenges with a focus on environment and climate issues by supporting the expansion of innovative agritech solutions across borders.
- **Launch:** 2023
- **Significance:** Instrumental in supporting start-ups and MSMEs in validating, adapting, and piloting their technologies for new markets.



Environment

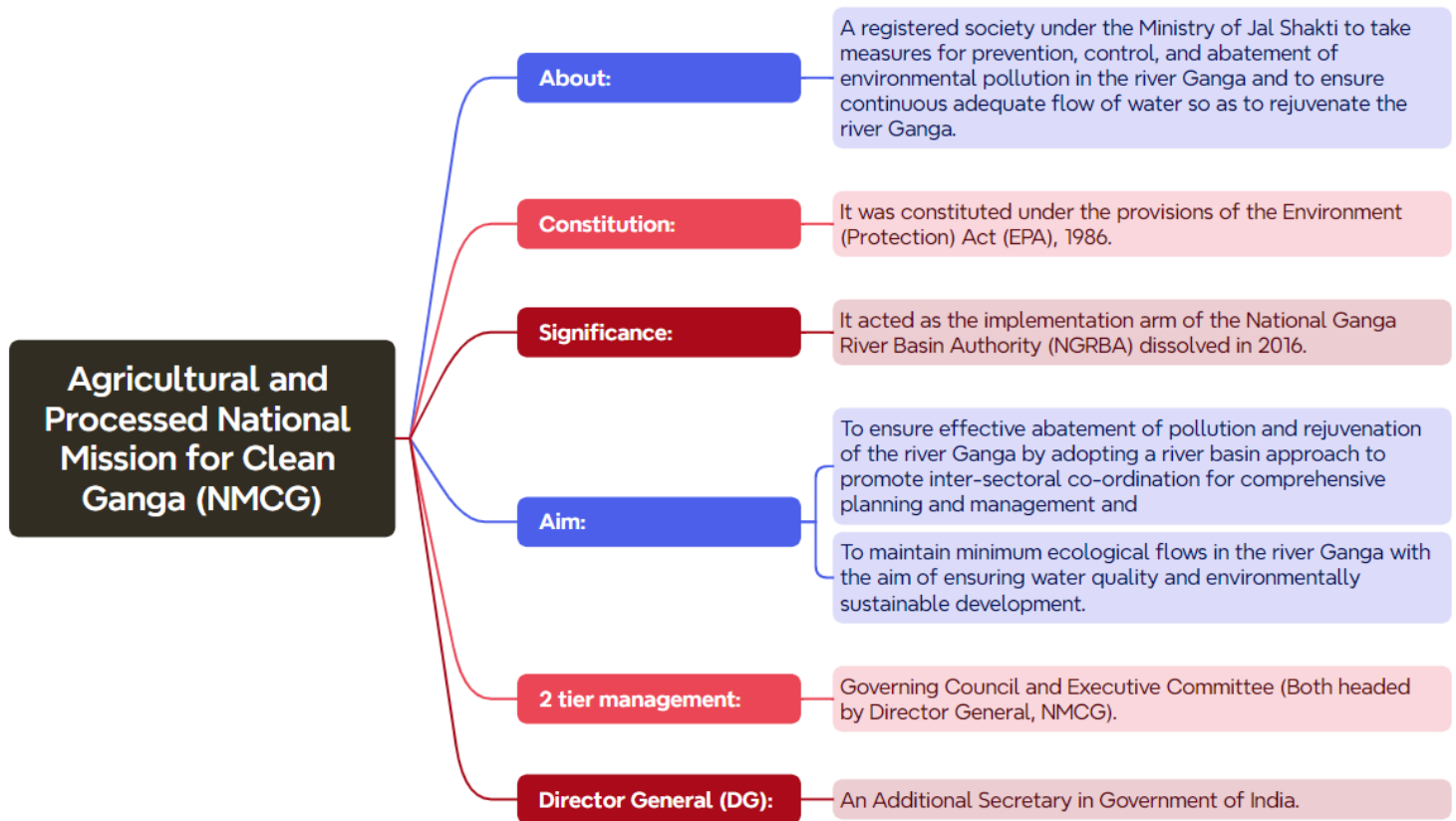
15. Clean Ganga mission - The Hindu

Relevance: Conservation, Environmental Pollution and Degradation

Context

The head of the National Mission for Clean Ganga (NMCG), the Centre's project to clean the Ganga and its tributaries, in a recent meeting, expressed concern over the tardiness of river-cleaning projects being executed in various States.

National Mission for Clean Ganga (NMCG)

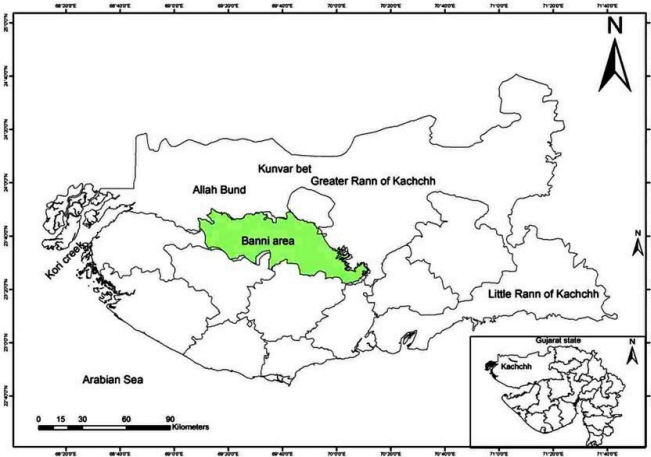


16. Banni grasslands of Kachchh - The Hindu

Relevance: Conservation, Environmental Pollution and Degradation

- **Location:** Northern border of Kachchh district in Gujarat.
- **Area:** One of the largest grasslands in the Indian subcontinent with an area of over 2500 sq.km.
- **Factors of formation:** Damming of rivers, introduction and spread of the invasive Prosopis juliflora tree, and continually varying composition and density of livestock that have grazed these grasslands for many centuries.

- **Biodiversity:** It has 37 grass species, 275 bird species, and domesticated animals like Buffalo, Sheep, Goat, Horses and Camel, as well as wildlife.
- **Components:** Kutch Desert Wildlife Sanctuary which spans over an area of 380 Sq. km and the 227 Sq. km Chhari Dhand Conservation Reserve.



- **Flora:** Prosopis Juliflora, Cressa critica, Cyperus spp, Sporobolus, Dichanthium, and Aristida.
- **Fauna:** Nilgai, Chinkara, Blackbuck, Wild boar, Golden Jackal, Indian Hare, Indian Wolf, Caracal, Asiatic Wildcat and Desert Fox etc. It is also a breeding ground for the Banni buffalo and the Kankrej cow.

17.Ranthambore Tiger Reserve (RTR) - Indian Express

Relevance: Conservation, Environmental Pollution and Degradation

- **Location:** Lies on the junction of Aravalis and Vindhyan ranges just 14 Kilometers from Sawai Madhopur district in Eastern Rajasthan.
- **Area:** One of the largest tiger reserves in northern India (1411 sq. km).
- **Rivers:** Chambal in the south and the Banas River in the north
- **Location of the 'Great Boundary Fault':** Here the Vindhyas plateau meets the Aravali range.
- **Lakes:** Padam Talab, Raj Bagh Talab, and Malik Talab
- **Vegetation:** Tropical dry deciduous and tropical thorn type.
- **Flora:** Dhok trees, grasslands at the plateaus; meadows in valleys and luxuriant foliage around the canals
- **Fauna:** Tiger, Leopard, wild boar, sloth bear, striped hyena, rhesus macaque, southern plains grey langur, 250 avifaunal species, and many more.



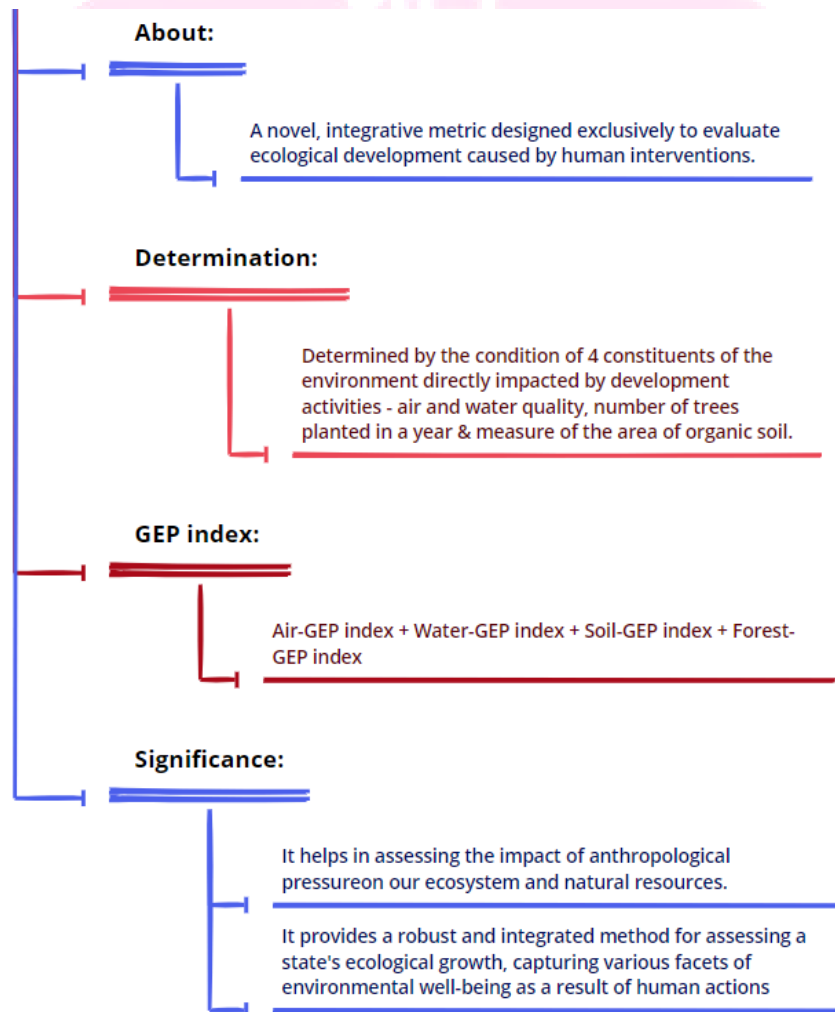
- Gross Environment Product Index - PIB

Relevance: Conservation, Environmental Pollution and Degradation

Context

Uttarakhand has not just become the first Indian state to launch a Gross Environment Product Index, but also the first in the world to go beyond ecosystem services to ecosystem growth.

Gross Environment Product Index



Sci and Tech

18. Zoopharmacognosy - The Hindu

Relevance: Science and Technology- Developments

- **Literal meaning:** Derived from "zoo" (animal), "pharmacon" (drug), and "gnosis" (knowledge).
- **About:** The ability of animals to self-medicate by seeking out and using natural substances like plants and minerals to treat or prevent ailments.
- **Examples:**
 - **Chimpanzees:** Consume certain bitter plants (like Vernonia amygdalina) to combat intestinal parasites.
 - **Elephants:** In East Africa, pregnant elephants have been observed eating leaves from certain trees to induce labor.
 - **Birds:** Some bird species incorporate specific plants into their nests to reduce parasite load.
 - **Monarch Butterflies:** Lay eggs on toxic milkweed to protect larvae from parasites.

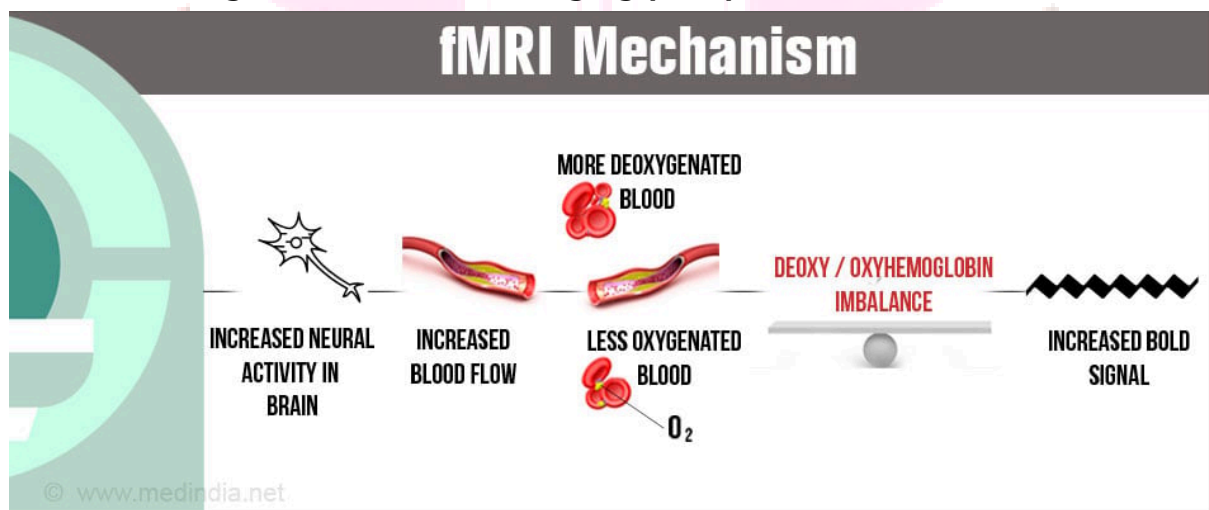
19. fMRI - The Hindu

Relevance: Science and Technology- Developments

Context

According to a latest study, fMRI may reveal depression 'subtypes' and treatments that could work.

Functional Magnetic Resonance Imaging (fMRI)



- **About:** A technique that reveals brain activity by measuring blood oxygen levels.
- **Significance:** It is a noninvasive technique to observe the brain's activity.

- **Difference from Traditional MRI:** Unlike traditional MRI, which focuses on brain structure, fMRI captures brain activity during specific functions or tasks.
- **Functioning:** It creates a functional map of brain activity, allowing researchers and physicians to better understand, diagnose, monitor, and treat various conditions.

20. How a foreign covert group was using ChatGPT to influence U.S. elections - The Hindu

Relevance: Science and Technology- Developments

Context

OpenAI recently said it banned ChatGPT accounts linked to an Iranian influence operation that used the chatbot to generate content to influence the U.S. presidential election. The company said it identified and took down a “cluster of ChatGPT accounts” and that it was monitoring the situation.

Storm-2035

- **About:** An Iranian-linked influence campaign targeting U.S. voters using AI-generated content.
- **Components:** Made up of four websites that acted as news organisations & exploited issues like LGBTQ rights and the Israel-Hamas conflict, to target U.S. voters.
- **Usage of AI tools:** The sites used AI tools to plagiarise stories and capture web traffic.

Similar issues faced by OpenAI in the past

- **Bad Grammar:** A Russian outfit used the Telegram to target Ukraine, Moldova, the Baltic States and the U.S.
- **Doppelganger:** Another Russia-based operation used ChatGPT to post articles and news stories.
- **Zeno Zeno:** An Israeli operation that OpenAI nicknamed ‘Zeno Zeno,’ used ChatGPT to post articles and news stories.
- **Spamouflage:** A Chinese network used ChatGPT to post articles and news stories.
- **International Union of Virtual Media:** An Iranian group used ChatGPT to write comments on social media platforms, and to post articles and news stories.

21. Dark patterns - The Hindu

Relevance: Science and Technology- Developments

- **About:** Deceptive and manipulative user interface (UI) design techniques employed by websites, apps, and other digital platforms to trick or manipulate users into taking actions they may not intend to take.
- **Coinage:** The term was coined in 2010 by Harry Brignull, a user experience specialist.
- **Usage:** These patterns are often used to encourage users to sign up for services, make purchases, or share personal information, among other things.

Types

SPOTTING DARK PATTERNS

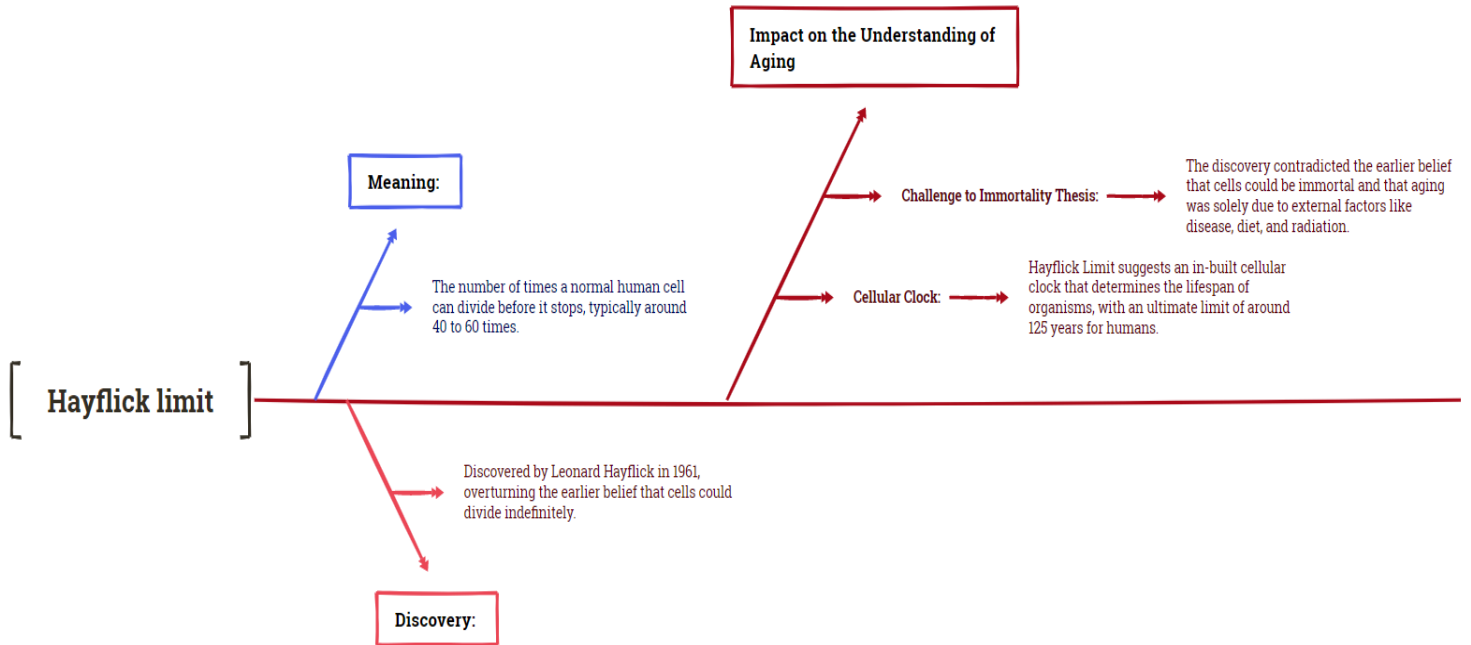
- **FALSE URGENCY**
Falsely implying a sense of urgency to mislead a user into making an immediate purchase or taking an immediate action
- **BASKET SNEAKING**
Inclusion of additional items at the time of checkout without consent
- **CONFIRM SHAMING**
Creating fear, shame or guilt to nudge the user to purchase a product
- **FORCED ACTION**
Forcing a user into taking an action that would require them to buy additional good(s) or subscribe or sign up for an unrelated service, in order to get the the product originally intended
- **SUBSCRIPTION TRAP**
Making cancellation of a paid subscription impossible or complex and hiding the cancellation option, among others
- **INTERFACE INTERFERENCE**
Manipulating user interface in ways that highlights certain specific information and obscures others. A common example is designing a light-coloured option for selecting 'no' in response to a pop-up
- **BAIT AND SWITCH**
Advertising a particular outcome based on user action but serving an alternate outcome
- **DRIP PRICING**
Elements of prices are not revealed upfront or are revealed surreptitiously
- **DISGUISED ADS**
Masking advertisements as other types of content such as user generated content or news articles.
- **NAGGING**
Buyers facing overload of unrelated requests, information, options or interruptions

22. HAYFLICK LIMIT - Indian Express

Relevance: Conservation, Environmental Pollution and Degradation

Biomedical researcher Leonard Hayflick, who discovered that normal somatic cells can divide (and thus reproduce) only a certain number of times, died on August 1 at the age of 98. Hayflick's discovery fundamentally changed the understanding of aging .

Hayflick limit



Defence

23. Army fields tactical ‘assault canine’ Zac at bilateral exercise in Sri Lanka - The Hindu

Relevance: Achievements of Indians in Science & Technology; Indigenization of Technology and Developing New Technology

Context

The armies of India and Sri Lanka have deployed canines — “K9s” in military parlance — in the bilateral exercise Mitra Shakti underway in the island nation.

Exercise Mitra Shakti

Exercise Mitra Shakti	About:	A joint military exercise between India and the Sri Lankan army.
	Edition:	10th edition
	Location:	Army Training School, Maduru Oya
	Participants from India:	120 soldiers from the Indian Army’s Rajputana Rifles (Raj Rif)
	Participants from Sri Lanka:	Represented by personnel from the Gajaba Regiment of the Sri Lankan Army
	Focus:	Joint operations in semi-urban environments, aligning with Chapter VII of the United Nations Charter, which deals with actions regarding threats to peace and security.
	Aim:	To improve the operational proficiency of both armies by facilitating the exchange of skills, experiences, and best practices.

24. INS Shivalik reaches Guam, an island territory of the U.S. - The Hindu

Relevance: Achievements of Indians in Science & Technology; Indigenization of Technology and Developing New Technology

Context

INS Shivalik reached Guam, an island territory of the United States of America, for an Operational Turnaround on successful completion of the recently concluded world’s largest Multinational Maritime Exercise RIMPAC 2024.

INS Shivalik

- **About:** The first stealth multi-role frigates built for the Indian Navy.
- **Construction:** Built at the Mazagon Dock Limited (MDL), Mumbai.
- **Commissioning:** April 29, 2010.
- **Maximum Speed:** 32 knots (59 km/h)
- **Significance:**

- Improved stealth and land-attacking features over the preceding Talwar-class frigates.
- First Indian Navy ship to use the CODOG propulsion system.
- Has a mix of Russian, Indian, and Western weapon systems.

Guam Island

- **About:** The largest, most populous, and southernmost of the Mariana Islands in the Northern Pacific Ocean & an island territory of the United States of America.
- **Reign:** A Spanish colony till 1898, then became a US territory after the Spanish-American War.
- **Climate:** Tropical climate having effect of northeast trade winds and the north equatorial ocean current that flows west across the Pacific.
- **Capital:** Hagåtña



Rim of the Pacific (RIMPAC) Exercise 2024

- **About:** The world's largest international maritime exercise, held in Hawaii.
- **Aim:** Enhancing interoperability and building trust among the navies of friendly foreign countries.
- **Participants:** Led by the US Navy, approx 29 countries participated in the current edition.
- **Theme:** "Partners: Integrated and Prepared"
- **Origin:** Commenced in 1971 as an annual exercise involving the US, Australia, and Canada. In 1974, the maritime exercise transitioned to a biennial event.

25. DRDO hands over Authority Holding Sealed Particulars of 'Nipun' munition to Directorate General of Quality Assurance - PIB

Relevance: Achievements of Indians in Science & Technology; Indigenization of Technology and Developing New Technology

Context

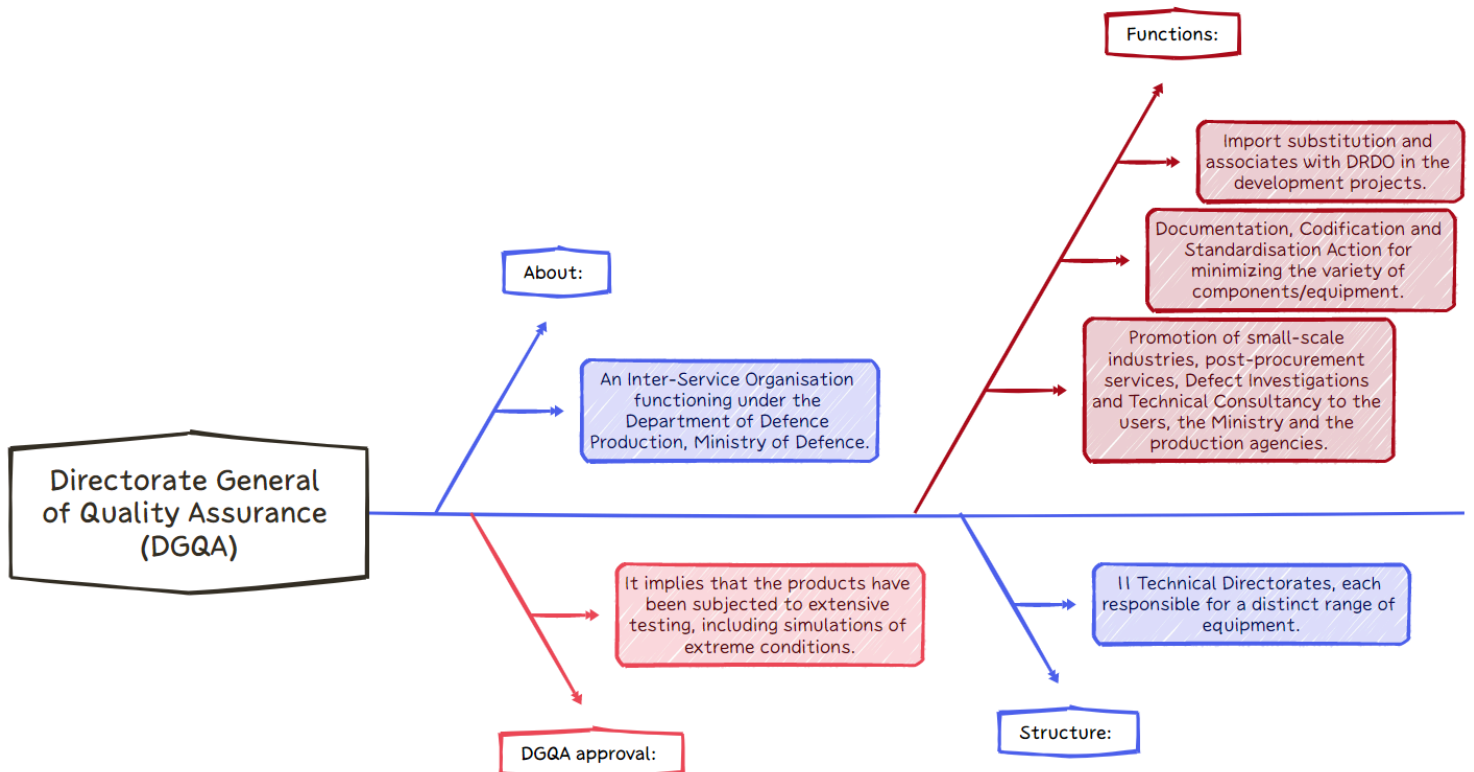
Defence Research and Development Organisation (DRDO) has handed over the Authority Holding Sealed Particulars (AHSP) of 'Nipun' munition to Directorate

General of Quality Assurance (DGQA) at Armament Research & Development Establishment (ARDE), Pashan, Pune.

Nipun

- **About:** A soft-target munition designed and developed by the Armament Research & Development Establishment (ARDE), in association with the High Energy Materials Research Laboratory (HEMRL), Pune.
- **Significance:**
 - Highly user-friendly and deadly against the enemy.
 - Completely safe during handling, transportation, and laying.

Directorate General of Quality Assurance (DGQA)



Miscellaneous

26. Ladki Bahin Yojana - The Hindu

- **About:** Under the scheme, eligible women in the age group of 21 to 65 years will get a monthly allowance of ₹1,500
- **Eligibility:** Women whose family income is less than ₹2.5 lakh.
- **Aim:** Ensuring overall development and empowerment of women, including economic independence, self-reliance, health and nutrition
- **Budget allocated:** 46,000 crores

27. Rakesh Pal - The Hindu

- Director-General of Indian Coast Guard Rakesh Pal passed away in Chennai recently. He was 59. The Coast Guard chief, who was in Chennai to take part in an official function scheduled to be attended by Defence Minister Rajnath Singh, died after suffering a cardiac arrest.



28. General S. Padmanabhan - The Hindu

- Former Chief of Army Staff (COAS) General S. Padmanabhan passed away at his residence in Chennai recently. He was the COAS between September 2000 and December 2002, was aged 83.

29. National Film Awards - The Hindu

Context

The winners of the 70th National Film Awards were declared recently.

National Film Awards

- **Establishment:** 1954
- **Aim:** Encouraging the production of films of aesthetic & technical excellence and social relevance and also to increase appreciation of different cultures and communities across India.
- **3 sections:** Feature Films, Non-Feature Films, and Best Writing in Cinema.
- **Administration:** Directorate of Film Festivals (since 1973).

Directorate of Film Festivals

- **Nodal Ministry:** Ministry of Information and Broadcasting
- **Aim:** Promotion of Indian films and cultural exchange through organization of various events in the country and participation in various International film festivals abroad.