

# CURRENT AFFAIRS

**PART-01**

*For* **RAPID REVISION PROGRAM  
UPSC PRELIMS 2025**

**500 MOST IMPORTANT MCQs**

**FROM 12 MONTHS CURRENT AFFAIRS**  
(Linked with PYQs)

## **INCLUSIONS:**

- ▶ Articles of The Hindu, Indian Express, Down to Earth & PIB
- ▶ Important Terms & Agreements
- ▶ Important Places in News
- ▶ SC Judgements and Committees in News
- ▶ Env. Species in News

शीलं परम भूषणम्



# ACCESS 500 MCQs VIDEOS PLAYLIST BY SCANNING THIS QR CODE



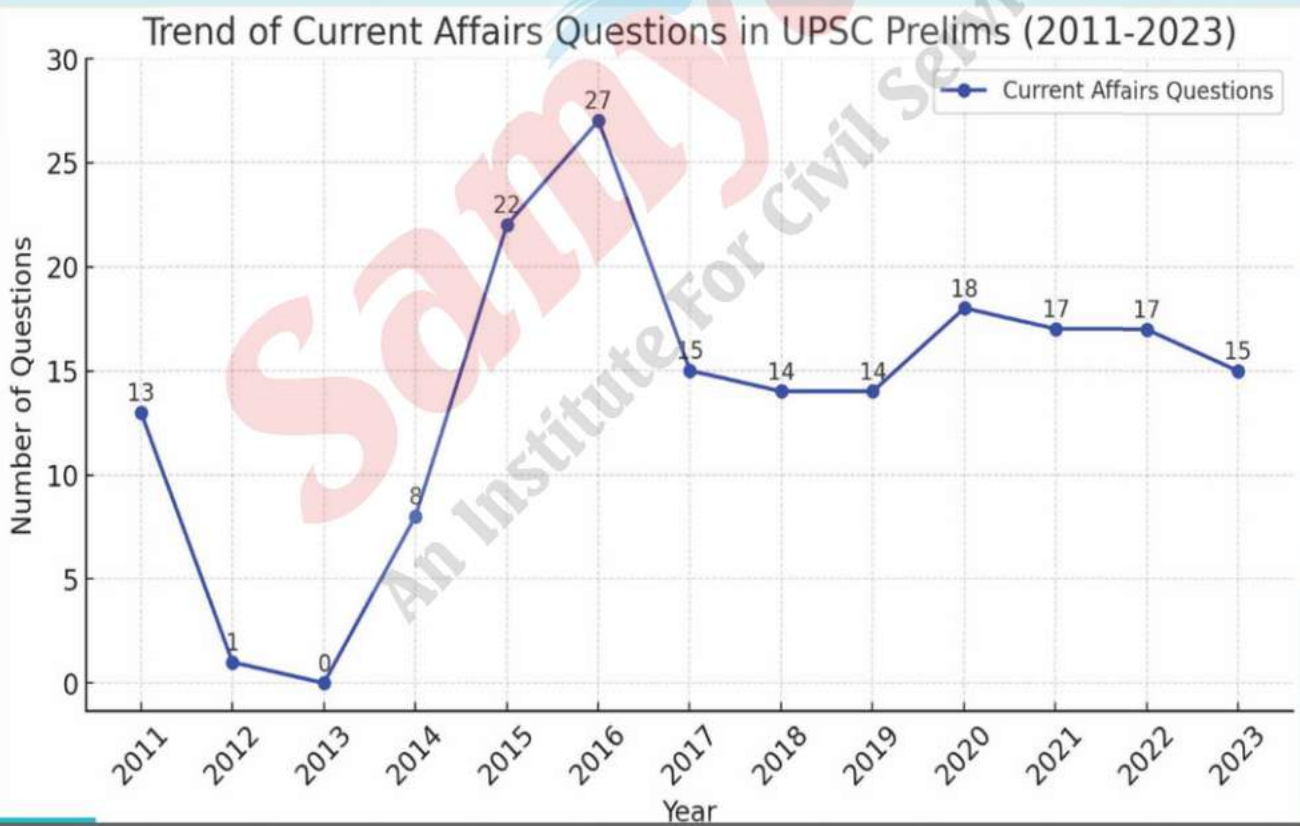
You Tube  
**SAMYAK IAS**  
@samyakias-jaipur





# TRENDS

## OF Current Affairs



# IMPORTANCE OF

# CURRENT AFFAIRS

In your preparation

2018

13. Which of the following has/have shrunk immensely/dried up in the recent past due to human activities ?

1. Aral Sea
2. Black Sea
3. Lake Baikal

Select the correct answer using the code given below :

- (a) 1 only
- (b) 2 and 3
- (c) 2 only
- (d) 1 and 3

## FROM CURRENT AFFAIRS



### An Entire Sea Disappeared In 50 Years. Read The Shocking Story

Aral Sea was the fourth-largest body of inland water in the world with an area of 68,000 square kilometres. It began shrinking in the 1960s after the rivers that fed it were diverted by Soviet irrigation projects.

2021

Which one of the following ancient towns is well-known for its elaborate system of water harvesting and management by building a series of dams and channelizing water into connected reservoirs?

- (a) Dholavira
- (b) Kalibangan
- (c) Rakhigarhi
- (d) Ropar

## FROM CURRENT AFFAIRS



THE HINDU

### Dholavira in Gujarat on UNESCO World Heritage list

The ongoing 44th session of the World Heritage Committee of the UNESCO has already given India a new world heritage site in the form of the Rudreswara Ramappa Temple in Telangana



# Brazil to host BRICS summit in Rio de Janeiro in July

BRICS was founded in 2009 by Brazil, Russia, India, and China, with South Africa joining a year later. Initially formed as a counterweight to the Group of Seven (G7) leading economies.

## Expected Question

**With reference to the BRICS, consider the following statements:**

1. It was founded in 2010 and South Africa was the founding member.
2. The BRICS Summit 2025 will be held in Russia.
3. Nigeria has been given “partner country” status, a designation introduced at the 2024 summit.
4. How many of the statements given above are correct?

**Code :**

- (a) Only one
- (b) Only two
- (c) All three
- (d) None

## PYQ 2010

44. With reference to BRIC countries, consider the following statements :

1. At present, China's GDP is more than the combined GDP of all the three other countries.
2. China's population is more than the combined population of any two other countries.

Which of the statements given above is/are correct ?

- (a) 1 only
- (b) 2 only
- (c) Both 1 and 2
- (d) Neither 1 nor 2

## Explanation

- Brazil has announced that the next BRICS summit will be held in Rio de Janeiro on July 6 and 7. According to a government statement, the country plans to focus on global governance reform and improving cooperation among Global South nations as it leads the bloc of developing economies through 2025. Hence, statement 2 is not correct.
- Brazil, Russia, India, and China created BRICS in 2009, with South Africa joining the following year. Hence, statement 1 is not correct.
- Indonesia recently became one of BRICS'11 official members, and Nigeria was granted “partner country” status, a title introduced at the 2024 summit in Kazan. Hence, statement 3 is correct.

Therefore, option (a) is the correct answer.





## Cabinet note soon for electronics parts production-linked incentive scheme

### Expected Question

**Q. With reference to the Production-Linked Incentive (PLI) schemes, consider the following statements:**

1. PLI schemes are crucial for India to scale up the domestic manufacturing base and to create lakhs of direct and indirect jobs.
2. If employment generation is used as a metric, all the 14 Production-Linked Incentive (PLI) schemes are relatively in the slow lane.
3. It does not include the aviation sector.

**Which of the statements given above is/are correct?**

- (a) 1 and 3 only                      (b) 1 only  
(c) 2 and 3 only                      (d) 1, 2 and 3

### PYQ 2023

Consider the following statements :

Statement-I :

India accounts for 3.2% of global export of goods.

Statement-II :

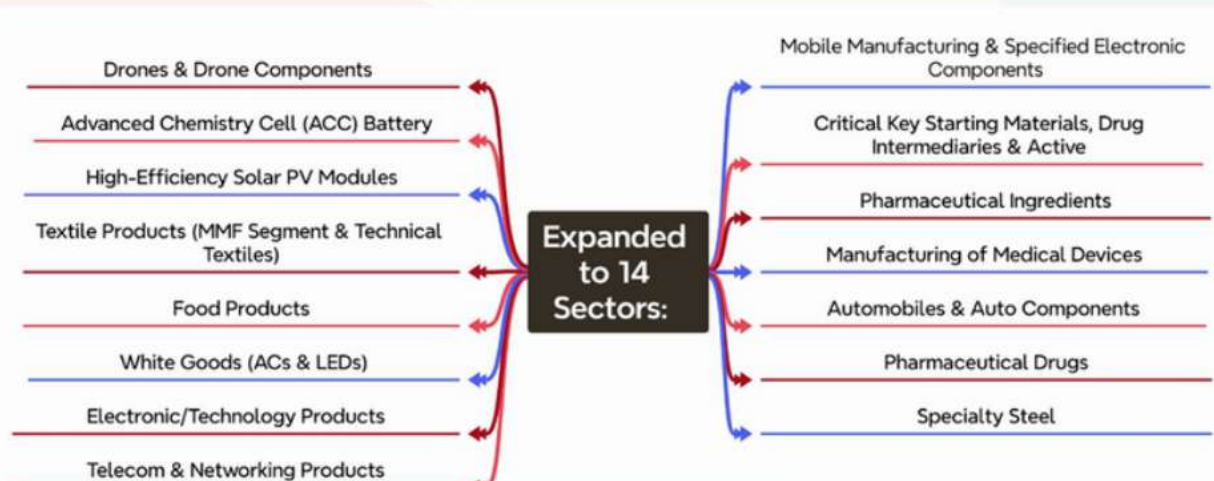
Many local companies and some foreign companies operating in India have taken advantage of India's 'Production-linked Incentive' scheme.

Which one of the following is correct in respect of the above statements?

- (a) Both Statement-I and Statement-II are correct and Statement-II is the correct explanation for Statement-I  
(b) Both Statement-I and Statement-II are correct and Statement-II is not the correct explanation for Statement-I  
(c) Statement-I is correct but Statement-II is incorrect  
(d) Statement-I is incorrect but Statement-II is correct

### Explanation

- Statement 1 is correct: PLI schemes aim to boost domestic manufacturing and increase India's contribution to global supply chains while generating direct and indirect jobs.
  - Statement 2 is not correct: Six PLI programs, including textiles, solar modules, and autos, are lagging in employment generation, while food processing and mobile manufacturing are progressing well.
  - Statement 3 is correct: PLI covers 14 sectors but excludes the aviation sector.
- Correct answer: Option (a).





# Trump authorises sanctions against ICC: What is the International Criminal Court?

President Donald Trump's move, which was condemned by the court, is a protest against the ICC's arrest warrant for Israeli Prime Minister Benjamin Netanyahu.

## Expected Question

With reference to the International Criminal Court, consider the following statements:

1. The court was established in 2002.
2. It can prosecute crimes committed by nationals of member states or on the territory of member states by other actors.
3. All the UN members are the member states of the court.

Which of the statements given above are correct?

- (a) 1 and 2 only    (b) 2 and 3 only  
(c) 1 and 3 only    (d) 1, 2 and 3

## PYQ 2018

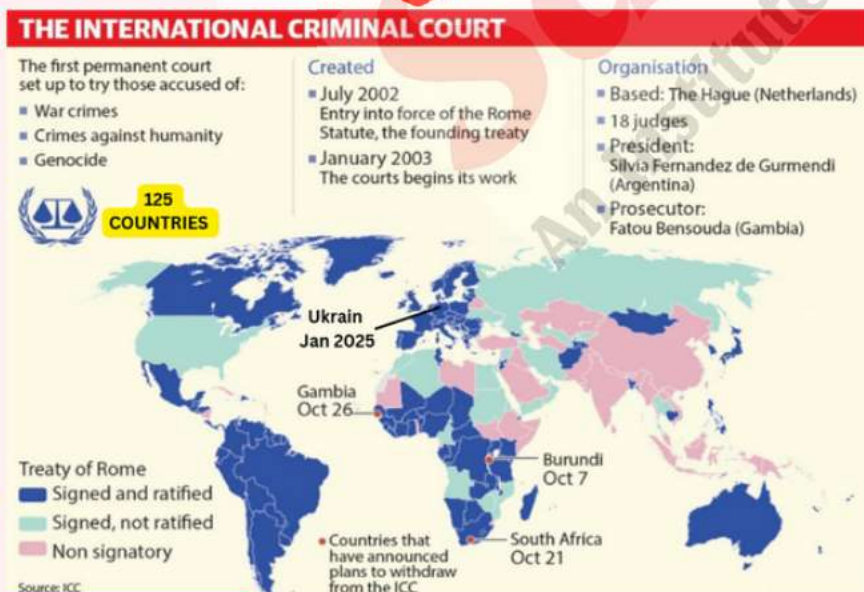
"Rule of Law Index" is released by which of the following ?

- (a) Amnesty International  
(b) International Court of Justice  
(c) The Office of UN Commissioner for Human Rights  
(d) World Justice Project

## Explanation

- US President Donald Trump has authorised economic and travel sanctions targeting people who work on International Criminal Court investigations of US citizens or US allies such as Israel.
- The court was established in 2002 to prosecute war crimes, crimes against humanity, genocide and the crime of aggression when member states are unwilling or unable to do so themselves. Hence, statement 1 is correct.
- It has the authority to punish crimes committed by member state nationals or by other actors on their territory. Hence, statement 2 is correct.
- It has 125 member nations. The court's budget for 2025 is around 195 million euros (\$202 million). Hence, statement 3 is not correct.

Therefore, option (a) is the correct answer.





# What are sovereign green bonds? Why is demand for such bonds weak in India?

Green bonds help governments raise capital for clean energy and infrastructure. But India's issues have struggled to secure lower borrowing costs typically associated with such bonds

**The Indian EXPRESS**  
JOURNALISM OF COURAGE

## Expected Question

PYQ 2021

Consider the following statements about green bonds:

1. These are debt instruments issued by corporations and multilateral banks.
2. These bonds raise funds for projects that reduce emissions or enhance climate resilience.
3. Investors in green bonds often seek unstable and short-term returns.

Which of the statements given above is/are correct?

- (a) 2 only  
(b) 1 and 2 only  
(c) 2 and 3 only  
(d) 1, 2 and 3

6. Indian Government Bond Yields are influenced by which of the following?

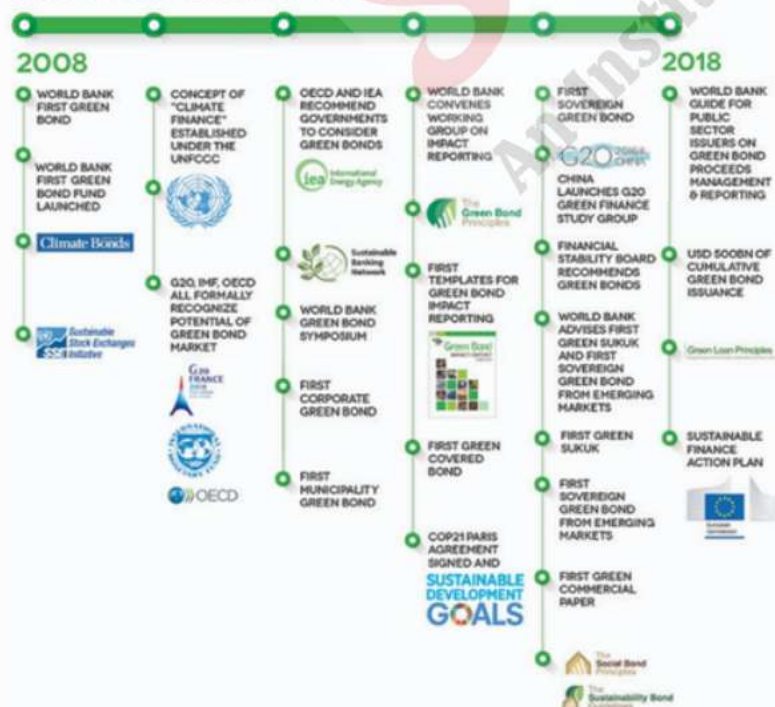
1. Actions of the United States Federal Reserve
2. Actions of the Reserve Bank of India
3. Inflation and short-term interest rates

Select the correct answer using the code given below.

- (a) 1 and 2 only  
(b) 2 only  
(c) 3 only  
(d) 1, 2 and 3

## Explanation

### THE FIRST GREEN BOND



- Green bonds are debt instruments issued by governments, corporations, and multilateral banks to fund projects that reduce emissions or enhance climate resilience. Hence, statements 1 and 2 are correct.
- Issuers offer green bonds at lower yields than conventional bonds, ensuring that proceeds are used exclusively for green investments.
- Investors in green bonds seek stable, long-term returns and may have mandates for green financing. Despite their potential, green bonds remain a small portion of the debt market as governments work on improving reporting and providing incentives. Hence, statement 3 is not correct.



# Understanding Budget's Makhanaanomics: Why Finance Minister Sitharaman announced creation of 'Makhana Board' in Bihar

## Expected Question

**Q. With reference to the makhana (fox nut), consider the following statements:**

1. It is the dried edible seed of the prickly water lily.
2. It can grow in both freshwater ponds and salty water ponds.
3. In 2022, 'Mithila Makhana' was conferred a Geographical Indication (GI) tag.
4. A Makhana Board will be established in Telangana announced during the Union Budget 2025-26.

How many of the statements given above are correct?

- (a) Only one
- (b) Only two
- (c) Only three
- (d) All four

## PYQ 2021

With reference to the "Tea Board" in India, consider the following statements :

1. The Tea Board is a statutory body.
2. It is a regulatory body attached to the Ministry of Agriculture and Farmers Welfare.
3. The Tea Board's Head Office is situated in Bengaluru.
4. The Board has overseas offices at Dubai and Moscow.

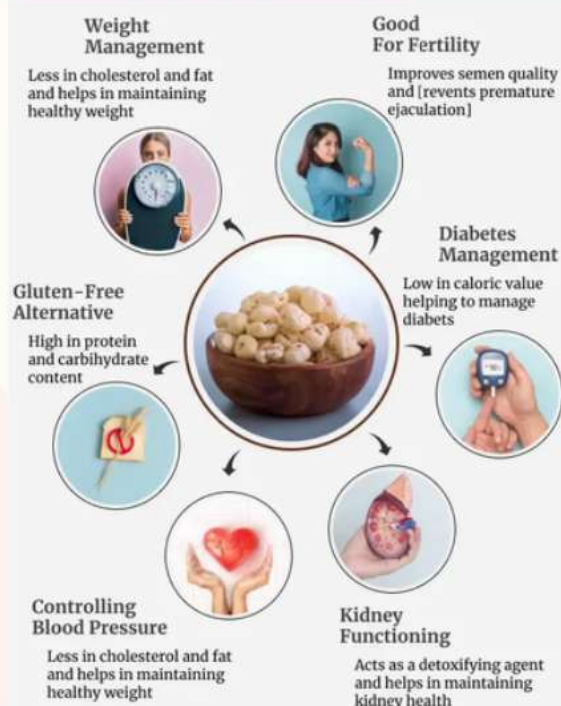
Which of the statements given above are correct ?

- (a) 1 and 3
- (b) 2 and 4
- (c) 3 and 4
- (d) 1 and 4

## Explanation

- Union Finance Minister announced the establishment of a "**Makhana Board**" in Bihar. Hence, statement 4 is not correct.
- **Mithila Makhana received a GI tag in 2022**, indicating its specific geographical origin. Hence, statement 3 is correct.
- **Bihar, India's largest producer**, contributes 90% of India's makhana output but faces challenges like low productivity, lack of processing equipment, and ineffective marketing channels.
- Makhana, also known as **fox nut**, is the dried seed of the prickly water lily (*Euryale ferox*), found in freshwater ponds across South and East Asia. Hence, statement 1 is correct, and statement 2 is not correct.
- Bihar cultivates makhana on over 15,000 hectares, producing nearly 10,000 tonnes annually (ICAR, 2020).

## Benefits Of MAKHANA





# Spike in methane emissions from tropical wetlands threatens climate goals

From 2020 to 2022, methane concentrations in the atmosphere hit their highest levels since measurements began in the 1980s.

## Expected Question

**Q. What are the sources of methane pollution?**

1. Organic waste in landfills
2. Wetlands
3. Rice fields
4. Natural gas extraction and transportation operations

Select the correct answer using the codes given below:

- (a) 1, 2 and 3
- (b) 2 and 3 only
- (c) 1, 2, 3 and 4
- (d) 3 and 4 only

## PYQ 2019

Which of the following statements are correct about the deposits of 'methane hydrate'?

1. Global warming might trigger the release of methane gas from these deposits.
2. Large deposits of 'methane hydrate' are found in Arctic Tundra and under the seafloor.
3. Methane in atmosphere oxidizes to carbon dioxide after a decade or two.

Select the correct answer using the code given below.

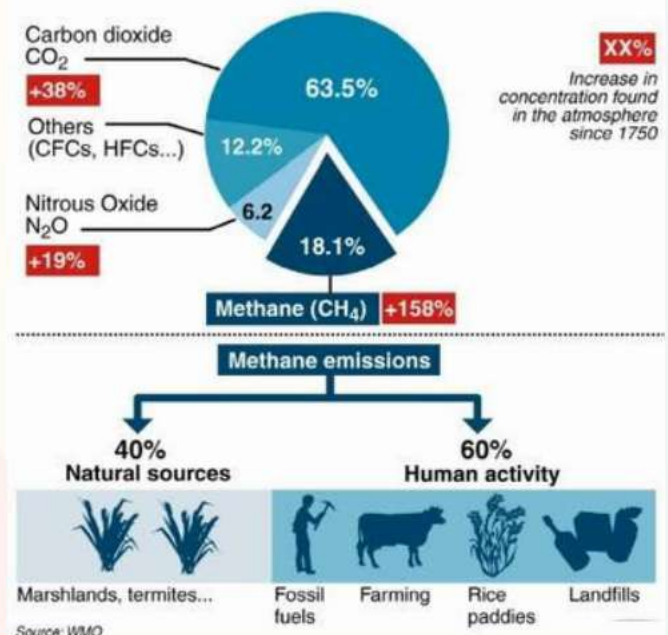
- (a) 1 and 2 only
- (b) 2 and 3 only
- (c) 1 and 3 only
- (d) 1, 2 and 3

## Explanation

- Tropical wetlands** emit large amounts of methane, hindering climate change efforts. Rising temperatures and heavy rains are increasing emissions, underestimated in climate models.
  - Methane**, a potent greenhouse gas, traps heat 80 times more effectively than **CO<sub>2</sub>** over 20 years. **Wetlands** release methane as bacteria break down **carbon-rich plant** matter, a process intensified by warming and floods.
  - Waste sector methane**, mainly from organic matter decomposition in landfills, is the fastest-growing source, contributing over **20% of anthropogenic emissions**. Other sources include livestock manure, rice cultivation, and natural gas extraction leaks.
- Therefore, option (c) is the correct answer.

## Methane: a significant contributor to global warming

Impact of methane and other gases on the greenhouse effect





# Economic drivers for communities, co-benefits of abandoned cattle for lions behind delicate human-lion co-existence in Gujarat, finds new study

Gujarat is the only home of the Asiatic Lions and calls to partially move them outside the state, including orders of the Supreme Court, have not been implemented.

## Expected Question

**Q. With reference to the Asiatic Lions, consider the following statements:**

1. Gujarat is the only home of the Asiatic Lions.
2. They can hunt prey and protect their area as a group in pride.
3. They are listed in Schedule 1 of the Wildlife Protection Act, 1972.
4. They are classified as Critically endangered by the IUCN.

**How many of the statements given above are correct?**

- (a) Only one
- (b) Only two
- (c) Only three
- (d) All four

## Related PYQ 2019

Consider the following statements :

1. Asiatic lion is naturally found in India only.
2. Double-humped camel is naturally found in India only.
3. One-horned rhinoceros is naturally found in India only.

Which of the statements given above is/are correct?

- (a) 1 only
- (b) 2 only
- (c) 1 and 3 only
- (d) 1, 2 and 3

## Explanation

- Asiatic Lions, which have a total population of 674 in Gujarat.
- Gujarat is the Asiatic Lions' only home, and calls to partially relocate them beyond the state, including Supreme Court decisions, have not been carried out. Conservationists have advocated for their relocation to nearby Madhya Pradesh to increase genetic interchange in the source population and to serve as a barrier against sickness and widespread infection. Hence, statement 1 is correct.
- These large cats may hunt prey and defend their territory as a group in pride. Females carry out the majority of the hunting and cub rearing activities. Hence, statement 2 is correct.
- Lions can thrive in a variety of settings, including semi-arid deserts, dense shrubbery, dry woods, and floodplains, thanks to their extraordinary adaptability. They prefer open savannas because it allows them to more easily stalk their prey.
- They are listed in Schedule 1 of the Wildlife Protection Act, 1972. Hence, statement 3 is correct.
- They are classified as Vulnerable by the IUCN. Hence, statement 4 is not correct.
- Therefore, option (c) is the correct answer.

### PRIDE PROTECTION

- The broad goals of Project Lion include averting the risk of extinction of Asiatic lions
- Another aim is to secure and manage lion habitat on a sustainable basis
- The geographical coverage of the project includes Gir Protected Areas and Girnar Wildlife Sanctuary

Other areas in the project are lion corridors (riverine and non-riverine) including government wastelands and gauchar lands





## First Secretary-level meeting between Defence Ministries of India & Democratic Republic of Congo held in New Delhi

Focuses on identifying areas for collaboration to fulfill the potential of bilateral defence cooperation

## 4th Session of India-Ghana Joint Trade Committee held in Accra

India, Ghana agree to operationalise UPI on Ghana Interbank Payment and Settlement Systems in six months

Both sides explore possibility of MoUs on Digital transformation Solutions and Local Currency Settlement System; opportunities under African Continental Free Trade Agreement also discussed

Digital economy, textiles, renewable energy and healthcare sectors identified as focus areas

### Expected Question

**Q. Match the following countries with the recent context in which they were in the news:**

**Country**

A. Togo

B. Democratic Republic of Congo (DRC)

C. Ghana

**Reason for Being in News**

1. First secretary-level meeting on defence with India

2. Strengthening trade ties at the 4th Joint Trade Committee meeting

3. Review of bilateral relations with India

**Select the correct answer using the code given below:**

(a) A-3, B-1, C-2

(b) A-2, B-1, C-3

(c) A-1, B-2, C-3

(d) A-3, B-2, C-1

### Related PYQ 2024

Consider the following countries :

1. Italy
2. Japan
3. Nigeria
4. South Korea
5. South Africa

Which of the above countries are frequently mentioned in the media for their low birth rates, or ageing population or declining population ?

- (a) 1, 2 and 4
- (b) 1, 3 and 5
- (c) 2 and 4 only
- (d) 3 and 5 only

### Explanation



Therefore the correct answer is : (a)A-3, B-1, C-2



# What is ITER and why is PM Modi's visit to the facility significant?

India is among the seven ITER members contributing to the project over the last two decades.

## Expected Question

**Q. With reference to the International Thermonuclear Experimental Reactor (ITER) consider the following statements:**

1. It is an international collaborative project aimed at building the world's largest magnetic fusion device.
2. The project, under development since 2005.
3. It is located in Norway.

**Which of the statements given above are correct?**

- (a) 1 and 3 only
- (b) 2 and 3 only
- (c) 1 and 2 only
- (d) 1 2 and 3

## Explanation

- Prime Minister Narendra Modi, who was in France for an AI summit, toured the ambitious International Thermonuclear Experimental Reactor, or ITER, alongside French President Emmanuel Macron.
- According to the ITER website, ITER is a multinational collaborative effort that aims to create the world's largest magnetic fusion device in order to demonstrate the feasibility of fusion as a large-scale, carbon-free source of energy. This operates on the same mechanism that powers the sun and stars. Hence, statement 1 is correct.
- According to the ITER website, engineers and scientists have contributed to ITER's design since the idea was proposed in 1985. The project, under development since 2005, aims to become one of the largest international science institutions. Hence, statement 2 is correct.
- The construction of a 42-hectare site in southern France began in 2010. ITER took over the central Tokamak facility for machine assembly in March 2020. The construction of the 1,250-tonne cryostat base in May 2020 marked the first major milestone in this phase. Hence, statement 3 is not correct.
- A tokamak is an experimental device that controls fusion energy. It absorbs energy generated by atomic fusion, which is converted into electricity through steam, turbines, and generators, similar to a regular power plant.

Therefore, option (c) is the correct answer.



## Suspected outbreak of Marburg virus kills 8 in Tanzania: WHO

The patients' contacts, including healthcare workers, have been identified and were being followed up, reports the World Health Organization

### Expected Question

**Q. With reference to the Marburg virus disease (MVD) consider the following statements:**

1. It belongs to the filovirus family.
2. The first recognised MVD outbreak occurred in Ghana.
3. There are no vaccines for MVD.
4. It is also called the "bleeding eye virus".

**Which of the statements given above are correct?**

- (a) 1 and 3 only
- (b) 1, 2 and 4
- (c) 3 and 4 only
- (d) 1, 3 and 4

### Explanation

- Statement 1 is correct: Marburg virus (MVD), a filovirus like Ebola, causes high-fatality outbreaks.
- Statement 2 is not correct: The first MVD outbreak occurred in Marburg, Germany, in 1967, with recent outbreaks in Africa.
- Statement 3 is correct: WHO lists MVD as a high-risk infection with no approved treatments or vaccines.
- Statement 4 is correct: Rwanda reported 66 infections and 15 deaths, with the first case in September 2024.

## MARBURG VIRUS ALERT

Marburg virus disease is a highly virulent disease that causes haemorrhagic fever, with a fatality ratio of up to 88%. It is in the same family as the virus that causes Ebola virus disease.

2 - 21 DAYS

(Incubation period)

0 5 10 15 20 25

Main symptoms usually starts appearing from 2 days to 3 weeks after infection

### SIGNS & SYMPTOMS

**Fever, pain in the muscles & joints**

**Headache**

**Rashes over the entire body**

**Sore throat**

These symptoms are often followed by: Vomiting, Diarrhoea, Abdominal pains, Internal and external bleeding

### PREVENTION

**Avoid direct contact with bodily fluids of infected persons**

**Proper hand hygiene**

**Avoid direct contact with bush animals**

**Wear protective clothing when attending to infected persons**



## Business Standard

### Lokpal forms inquiry wing to probe graft cases against public servants

Related PYQ 2019

#### Expected Question

**Q. Consider the following statements:**

1. Both the 1st and 2nd Administrative Reforms Commission (ARC) recommended the establishment of the Lokpal institution.
2. The Lokayukta is appointed by the President of India in consultation with the Chief Justice of India.
3. The Lokpal consists of a Chairperson and 8 members, with 50% being judicial members, appointed by the President.

**Which of the above statements are correct?**

- a) 1 and 2 only
- b) 1 and 3 only
- c) 2 and 3 only
- d) 1, 2, and 3

**54. Consider the following statements :**

1. The United Nations Convention against Corruption (UNCAC) has a 'Protocol against the Smuggling of Migrants by Land, Sea and Air'.
2. The UNCAC is the ever-first legally binding global anti-corruption instrument.
3. A highlight of the United Nations Convention against Transnational Organized Crime (UNTOC) is the inclusion of a specific chapter aimed at returning assets to their rightful owners from whom they had been taken illicitly.
4. The United Nations Office on Drugs and Crime (UNODC) is mandated by its member States to assist in the implementation of both UNCAC and UNTOC.

Which of the statements given above are correct?

- (a) 1 and 3 only
- (b) 2, 3 and 4 only
- (c) 2 and 4 only
- (d) 1, 2, 3 and 4

#### Explanation

1. Correct: Both the 1st and 2nd Administrative Reforms Commission (ARC) recommended the establishment of the Lokpal institution to address corruption at the central level.
2. Incorrect: The Lokayukta is appointed by the Governor of the State, generally in consultation with the Chief Justice of the State High Court and the Leader of the Opposition in the State Legislative Assembly.
3. Correct: The Lokpal consists of a Chairperson (who is or has been the Chief Justice of India or a Judge of the Supreme Court) and 8 members, with 50% being judicial members, appointed by the President of India.



# What is happening in Congo and why are M23 rebels fighting?

The rebels entered Goma, the capital of North Kivu province, on January 27 night and had seized control of the city's airport by January 28 evening, after facing pockets of resistance in strategic areas

## Expected Question

**M23 rebels were recently in the news. They are:**

- (a) the latest group of ethnic Tutsi-led insurgents to take up arms against Congolese forces.
- (b) immigrants mostly Germans and southern Europeans but also Lebanese.
- (c) mixture of Amerindian and European ancestry.
- (d) part of the largest population in Brazil and the Dominican Republic.

## Explanation

- **Rwandan-backed M23 rebels** in the Democratic Republic of the Congo are attempting to march south towards Bukavu, the seat of South Kivu province, in an attempt to expand their dominance over the country's east after seizing Goma.
- The most recent fighting is part of a massive escalation in a decades-long war over power, identity, and resources that has killed hundreds of thousands of people and displaced more than one million since its recent rebirth.
- **M23, named after the March 23, 2009**, accord that ended a previous Tutsi-led insurrection in eastern Congo, is the most recent group of ethnic Tutsi-led militants to take up arms against Congolese soldiers. It started the present insurrection in 2022.
- The group has accused the Congolese government of failing to implement the peace agreement and properly integrating Congolese Tutsis into the army and administration.

Therefore, option (a) is the correct answer.





# Mangrove cover in Karnataka up by 2.54 sq. km, says report

According to India State of Forest Report - 2023 mangrove cover in Karnataka stands at 14.20 sq. km

## Expected Question

**Q. Consider the following statements regarding mangroves:**

1. Mangroves are primarily located on tropical, subtropical, and warm temperate coasts, covering around 15% of the world's coastlines.
2. Mangroves can survive in saline water, with their roots adapted to filter out excess salt.
3. The SAIME initiative promotes integrated mangrove aquaculture systems to build sustainable aquaculture farms.

**Which of the above statements are correct?**

- a) 1 and 2 only
- b) 2 and 3 only
- c) 1 and 3 only
- d) 1, 2, and 3

## Related PYQ 2015

**38. Which one of the following regions of India has a combination of mangrove forest, evergreen forest and deciduous forest?**

- (a) North Coastal Andhra Pradesh
- (b) South-West Bengal
- (c) Southern Saurashtra
- (d) Andaman and Nicobar Islands

## Explanation

- Mangroves have specialized roots that filter out excess salt, enabling them to survive in saline environments.
- Mangroves are found in tropical, subtropical, and warm temperate coastal areas, covering about 15% of global coastlines.
- SAIME (Sustainable Aquaculture in Mangrove Ecosystem) uses integrated mangrove aquaculture (IMA) systems to build sustainable farms.

### Mangroves

Extraordinary tropical forests that grow at the edge of the land and sea, which are also rare and increasingly threatened.

**30-50%** of mangrove forests have been lost due to shrimp farming, tourism, intrusive coastal development and other factors.

Mangroves are home to many **Endangered Species**

#### Benefits of Mangroves

- They prevent erosion and stabilize shorelines.
- They reduce wave height by up to 66% during storm events.
- They provide habitat for up to 80% of commercially and recreationally important fish species.
- They improve water quality and clarity.
- They provide privacy and shade for coastal property owners.

#### Threats to Mangroves

- DEFORESTATION
- POLLUTION
- CLIMATE CHANGE

#### HELP PROTECT MANGROVES

Plant a Mangrove tree and stop the destruction of our Mangrove and the animals that inhabit them. By protecting trees you are protecting your family, your food, your health and your wealth.

For more info please write to [info@friendofthesea.org](mailto:info@friendofthesea.org) or check [www.friendofthesea.org](http://www.friendofthesea.org)

For more info please write to [info@friendoftheearth.org](mailto:info@friendoftheearth.org) or check [www.friendoftheearth.org](http://www.friendoftheearth.org)



# Bail under PMLA: interpretation by SC, HC of the law on the exception for women

A Supreme Court bench was hearing the case of Shashi Bala, a government school teacher who has been accused of aiding the Shine City Group of Companies in a money laundering scam.

## Expected Question

**Q. With reference to the Prevention of Money Laundering Act, 2002 (PMLA) consider the following statements:**

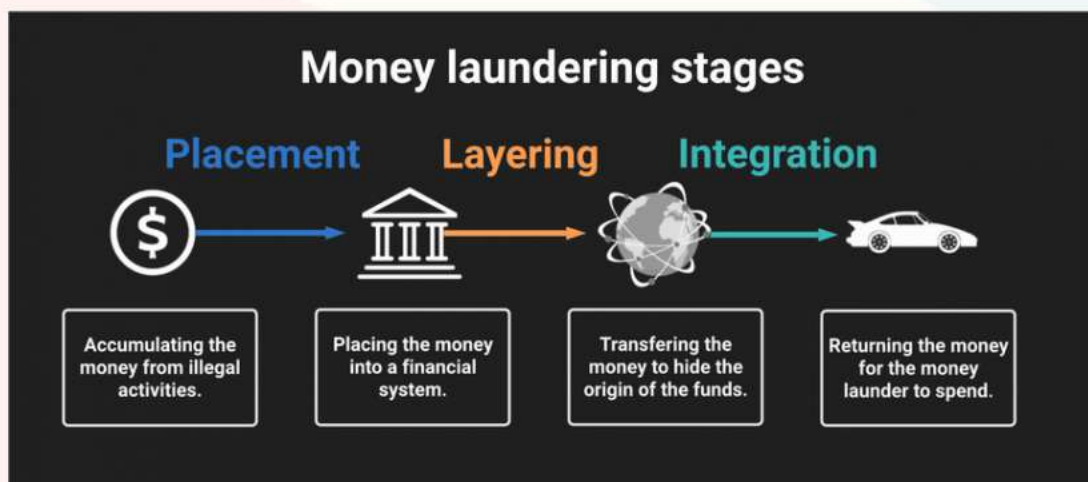
1. It provides for bail on money laundering charges.
2. A person, who is under the age of sixteen years or is a woman or is sick or infirm, may be released on bail, if the Special Court so directs.
3. A person accused of an offence under this Act shall be released on bail even if the public prosecutor has not been allowed to oppose the application for such release.

**Which of the statements given above are correct?**

- (a) 1 and 3 only
- (b) 2 and 3 only
- (c) 1 and 2 only
- (d) 1, 2 and 3

## Explanation

- The Supreme Court criticised the Enforcement Directorate for claiming that stringent bail conditions under the PMLA, 2002, apply to women, despite an exception in the Act.
- Statement 1 is correct: Section 45 imposes strict bail conditions, requiring the accused to prove no prima facie case.
- Statement 2 is correct: An exception allows bail for women, minors, and infirm persons if directed by the Special Court.
- Statement 3 is not correct: Section 45(1) mandates public prosecutor involvement and court satisfaction for granting bail.





# Amid raging fighting in Myanmar, 100th shipment from India reaches Sittwe port

The ambitious KMTTP project aims to link India's North East region with South East Asia through a highway and a deep-sea port at Sittwe in Myanmar's Rakhine province

## Expected Question

**Q. Consider the following statements regarding Chabahar and Sittwe ports:**

1. Shahid Beheshti Terminal at Chabahar Port is being developed by India under a 10-year agreement with Iran.
2. Sittwe Port, located in Bangladesh, recently received its 100th shipment from India amidst ongoing conflict in Myanmar.

**Which of the statements given above is/are correct?**

- (a) 1 only
- (b) 2 only
- (c) Both 1 and 2
- (d) Neither 1 nor 2

## PYQ 2023

**2. Consider the following pairs :**

Port	Well known as
1. Kamarajar Port	: First major port in India registered as a company
2. Mundra Port	: Largest privately owned port in India
3. Visakhapatnam Port	: Largest container port in India

**How many of the above pairs are correctly matched?**

- (a) Only one pair
- (b) Only two pairs
- (c) All three pairs
- (d) None of the pairs

## Explanation

- Statement 1 is correct: India signed a 10-year agreement with Iran to develop the Shahid Beheshti Terminal at Chabahar Port.
- Statement 2 is not correct: Sittwe Port is located in Myanmar, not Bangladesh. The port recently received its 100th shipment from India amidst ongoing conflict in Myanmar.





# India, Pakistan extend Sri Kartarpur Sahib Corridor agreement by 5 years

MEA noted that in response to ongoing requests from pilgrims regarding the \$20 service charge imposed by Pakistan for each visitor, India has reiterated its appeal for Pakistan to waive any fees or charges for pilgrims.

## Expected Question

**Q. India and Pakistan recently extended the validity of the Agreement on the Sri Kartarpur Sahib Corridor for another five years. Regarding this, which of the following statements is incorrect?**

- a) It links Gurdwara Dera Baba Nanak in India with Gurdwara Darbar Sahib in Kartarpur, Pakistan.
- b) Indian pilgrims are allowed visa-free access to visit the site.
- c) Kartarpur served as the final resting place of Guru Nanak Dev Ji.
- d) Kartarpur is situated along the banks of the River Sutlej.

## Related PYQ 2019

10. With reference to India's projects on connectivity, consider the following statements :

1. East-West Corridor under Golden Quadrilateral Project connects Dibrugarh and Surat.
2. Trilateral Highway connects Moreh in Manipur and Chiang Mai in Thailand via Myanmar.
3. Bangladesh-China-India-Myanmar Economic Corridor connects Varanasi in Uttar Pradesh with Kunming in China.

How many of the above statements are correct?

- (a) Only one
- (b) Only two
- (c) All three
- (d) None

## Explanation

- Recently, India and Pakistan have agreed to extend the validity of the Agreement on Sri Kartarpur Sahib
- **Corridor for the next five years.**
  - Agreement provides for visa-free travel of Indian pilgrims and Overseas Citizen of India (OCI) cardholders, from India to Gurdwara Darbar Sahib Kartarpur in Pakistan on a daily basis, throughout the year.
- **About Dera Baba Nanak - Sri Kartarpur Sahib Pilgrimage:**
  - Gurdwara Sri Kartarpur Sahib falls in district Narowal of Pakistan, about 4.5 km. from the international border near the historic town of Dera Baba Nanak, District Gurdaspur, Punjab.
  - Village Kartarpur is located on the west bank of river Ravi. Hence option (d) is not correct.
  - Gurdwara Dera Baba Nanak is on the east bank of River Ravi.
- Kartarpur is the final resting place of **Guru Nanak Dev Ji**, where he spent the last 18 years of his life.

Therefore C is the correct answer.





Wildlife &amp; Biodiversity

## Snow Leopard: Enigmatic big cat of High Asia now National Symbol of Kyrgyzstan

Kyrgyz president Sadyr Zhaparov signed decree on December 30, asking his Cabinet to safeguard the species and promote it

### Expected Question

**Q.Consider the following statements regarding the Snow Leopard:**

1. It is found only in the Himalayas and is restricted to India and Nepal.
2. Snow leopards are incapable of roaring like other big cats.
3. It is the national symbol of Kyrgyzstan.

**Which of the statements given above is/are correct?**

- (a) 1 and 2 only
- (b) 2 and 3 only
- (c) 1 and 3 only
- (d) 1, 2, and 3

### Related PYQ 2012

**97. Consider the following :**

1. Black-necked crane
2. Cheetah
3. Flying squirrel
4. Snow leopard

Which of the above are naturally found in India?

- (a) 1, 2 and 3 only
- (b) 1, 3 and 4 only
- (c) 2 and 4 only
- (d) 1, 2, 3 and 4

### Explanation

- Statement 1:Incorrect
  - The Snow Leopard is not restricted to the Himalayas or India and Nepal. It is found across a vast range of mountain ecosystems in 12 countries, including China, Mongolia, Russia, Kazakhstan, Pakistan, and Afghanistan, apart from India and Nepal.
- Statement 2:Correct
  - Unlike other big cats (like lions and tigers), snow leopards cannot roar due to the physiological structure of their larynx. Instead, they make a variety of sounds, including growls, yowls, and purrs.
- Statement 3:Correct
  - The snow leopard is the national symbol of Kyrgyzstan, representing the country's mountainous landscape and wildlife diversity.

#### Additional Information:

- Snow leopards are listed as Vulnerable on the IUCN Red List.
- India launched the Project Snow Leopard in 2009 to protect its population in the Himalayas.

Therefore, b is the correct answer



PHYSICAL FEATURES		POPULATION	
They are the smallest of the big cats with tails that can be nearly as long as their bodies. They have thick, smoky-gray fur patterned with dark gray open rosettes and spots. In the mountains they blend perfectly with the rocky slopes, making them practically invisible.		<b>3,500-7,000</b> estimated number of snow leopards left in the wild	
<b>WEIGHT</b> 33-46 kg	<b>BODY LENGTH</b> 100-121 cm	Snow leopards are elusive and live in harsh and remote habitats. They are rarely seen which makes them extremely difficult to count.	
Snow leopards cannot roar because their larynx lacks the folds needed to produce that type of sound.		<b>455</b> estimated number of snow leopards in zoos around the world	
<b>ADAPTATIONS</b>		<b>BEHAVIOR</b>	
<b>FOR LIFE ON THE MOUNTAIN</b>		Snow leopards are mostly solitary, except when mating or when females are raising cubs. Mating occurs between Jan. and March. 1-3 cubs are generally born 90-105 days later. Cubs stay with their mother until they reach independence at about 20-22 months.	
<ul style="list-style-type: none"> <li>• well-muscled, stocky build for leaping and hunting</li> <li>• enlarged nasal cavity</li> <li>• long thick fur with woolly undergrowth for warmth</li> </ul>		<ul style="list-style-type: none"> <li>• Very long flexible tail for balance</li> <li>• low center of gravity</li> <li>• large paws for good grip on slopes and snowy fields</li> </ul>	
		Snow leopards are crepuscular, meaning most active at dawn and dusk. They have large home ranges averaging 230 km <sup>2</sup> for males and 130 km <sup>2</sup> for females.	



## Slur against judiciary: Contempt convict to undergo psychological examination

Justices S.M. Subramaniam and N. Senthilkumar of the Madras HC direct superintendent of Puzhal central prison to take the convict to Kilpauk hospital

### Expected Question

**Q. Consider the following statements regarding Contempt of Court:**

1. Civil contempt refers to willful disobedience of any judgment, order, or direction of a court.
2. Criminal contempt includes any act that scandalizes or lowers the authority of the court or interferes with judicial proceedings.
3. The Contempt of Courts Act, 1971, grants power to the Supreme Court and High Courts to punish for contempt.

**Which of the above statements are correct?**

- a) 1 and 2 only
- b) 2 and 3 only
- c) 1 and 3 only
- d) 1, 2, and 3

### PYQ 2022

11. Consider the following statements :

1. Pursuant to the report of H.N. Sanyal Committee, the Contempt of Courts Act, 1971 was passed.
2. The Constitution of India empowers the Supreme Court and the High Courts to punish for contempt of themselves.
3. The Constitution of India defines Civil Contempt and Criminal Contempt.
4. In India, the Parliament is vested with the powers to make laws on Contempt of Court.

Which of the statements given above is/are correct ?

- (a) 1 and 2 only
- (b) 1, 2 and 4
- (c) 3 and 4 only
- (d) 3 only

### Explanation

1. Correct: Civil contempt involves wilful disobedience to any court judgment, order, or direction.
2. Correct: Criminal contempt includes scandalizing the court, prejudicing judicial proceedings, or obstructing the administration of justice.
3. Correct: The Contempt of Courts Act, 1971, empowers the Supreme Court and High Courts to punish for contempt under Articles 129 and 215 of the Constitution.



## US commits to 61% emissions cut by 2035: What does its updated NDC plan say?

The new target for 2035 has been disclosed in the updated Nationally Determined Contribution, or NDC, that the US submitted to the UN Climate Change on Thursday night

### Expected Question

**Consider the following statements:**

**Statement 1:** The United States has announced its emission reduction target for 2035, promising to reduce its emissions to 61-66 per cent below 2005 levels by that time.

**Statement 2:** The current US target for 2030 aims to attain 50-52 per cent reductions over 2005 levels.

**Which one of the following is correct in respect of the above statements?**

- (a) Both Statement 1 and Statement 2 are correct and Statement 2 is the correct explanation for Statement 1.
- (b) Both Statement 1 and Statement 2 are correct and Statement 2 is not the correct explanation for Statement 1.
- (c) Statement 1 is correct but Statement 2 is incorrect.
- (d) Statement 1 is incorrect but Statement 2 is correct.

### PYQ 2016

97. With reference to the Agreement at the UNFCCC Meeting in Paris in 2015, which of the following statements is/are correct?

1. The Agreement was signed by all the member countries of the UN and it will go into effect in 2017.
2. The Agreement aims to limit the greenhouse gas emissions so that the rise in average global temperature by the end of this century does not exceed 2 °C or even 1.5 °C above pre-industrial levels.
3. Developed countries acknowledged their historical responsibility in global warming and committed to donate \$ 1000 billion a year from 2020 to help developing countries to cope with climate change.

Select the correct answer using the code given below.

- (a) 1 and 3 only
- (b) 2 only
- (c) 2 and 3 only
- (d) 1, 2 and 3

### Explanation

- Just a month before President-elect Donald Trump takes office, the United States has unveiled its 2035 emission reduction target, aiming to lower emissions by 61-66 percent below 2005 levels by then. Hence, statement 1 is correct.
- This adds on the current US objective for 2030, which aims to achieve 50-52% reductions above 2005 levels. Hence, statement 2 is correct.
- The increased target for 2035 was revealed in the amended Nationally Determined Contribution, or NDC, that the United States submitted to the UN Climate Change on Thursday (December 19) night.

Therefore, option (a) is the correct answer.



Pravasi Bharatiya Divas  
Celebrating India's Global Diaspora

Posted On: 08 JAN 2025 6:37PM by PIB Delhi

*"The nation has entered the Amrit Kaal of the next 25 years. Our Pravasi Bharatiyas have a significant place in this journey. India's unique global vision and its important role in the global order will be strengthened by you."*

Prime Minister Shri Narendra Modi

### Expected Question

**With reference to the Pravasi Bharatiya Diwas (PBD) consider the following statements:**

1. The event is held every year to "honour the contributions of the Indian diaspora to their homeland".
2. The 18th edition of the Pravasi Bharatiya Diwas was inaugurated in Bhubaneswar.
3. The idea of a day dedicated to recognising overseas Indians emerged and was first held in 2003.
4. January 9 was selected as it was the date when Mahatma Gandhi returned to India from South Africa in 1915.

**How many of the statements given above are correct?**

- (a) Only one
- (b) Only two
- (c) Only three
- (d) All four

### PYQ 2016

With reference to the 'Pradhan Mantri Surakshit Matritva Abhiyan', consider the following statements :

1. This scheme guarantees a minimum package of antenatal care services to women in their second and third trimesters of pregnancy and six months post-delivery health care service in any government health facility.
2. Under this scheme, private sector health care providers of certain specialities can volunteer to provide services at nearby government health facilities.

Which of the statements given above is/are correct ?

- (a) 1 only
- (b) 2 only
- (c) Both 1 and 2
- (d) Neither 1 nor 2

### Explanation



- On January 9, Prime Minister Narendra Modi opened the 18th edition of the Pravasi Bharatiya Diwas in Bhubaneswar, with a speech titled 'Diaspora's Contribution to a Viksit Bharat'. Hence, statement 2 is correct.
- The event is organised every two years to "honour the contributions of the Indian diaspora to their homeland". Hence, statement 1 is not correct.
- According to the Ministry of External Affairs, over 3.5 crore Overseas Indians (NRIs and PIOs) live overseas.
- The concept of a day dedicated to commemorating Indians abroad emerged, first conducted in 2003. Hence, statement 3 is correct.
- January 9 was selected as the date when Mahatma Gandhi returned to India from South Africa in 1915. Hence, statement 4 is correct.

Therefore, option (c) is the correct answer.



# Why smog came early to Punjab, parts of north India this year

## Expected Question

With reference to the Smog, consider the following statements:

1. It is a type of air pollution that creates a hazy or foggy atmosphere.
2. It forms when pollutants react chemically in the presence of sunlight.
3. Volatile organic compounds are not a part of the smog.
4. Stubble burning is cited as a major contributor to smog in northern India.

Which of the statements given above are correct?

- (a) 1, 2 and 3 only
- (b) 1, 2 and 4 only
- (c) 1 and 2 only
- (d) 1, 3 and 4 only

## PYQ 2013

49. Photochemical smog is a resultant of the reaction among

- (a)  $\text{NO}_2$ ,  $\text{O}_3$  and peroxyacetyl nitrate in the presence of sunlight
- (b)  $\text{CO}$ ,  $\text{O}_2$  and peroxyacetyl nitrate in the presence of sunlight
- (c)  $\text{CO}$ ,  $\text{CO}_2$  and  $\text{NO}_2$  at low temperature
- (d) high concentration of  $\text{NO}_2$ ,  $\text{O}_3$  and  $\text{CO}$  in the evening

## Explanation

- Smog is a form of air pollution that reduces visibility and affects air quality.
- The term was first coined in the early 1900s for a mix of smoke and fog, later associated with coal-based pollution.
- It forms when pollutants like nitrogen oxides and VOCs from vehicles, industries, and power plants react with sunlight, forming a toxic haze.
- This reaction intensifies with fog or high humidity.
- Statement 1, 2, and 4 are correct, while Statement 3 is incorrect as it misrepresents the sources and process.

## WHAT THE ANALYSIS SHOWS

The Indian EXPRESS

GAS	PRE-SMOG (AVG)	SMOG (AVG)	SMOG PEAK (24-HR)
CO	2.4	2.9	3.6
SO <sub>2</sub>	9.8	12.7	14.8
NO <sub>2</sub>	49	59	64

(8-hr standard for CO:  $2 \mu\text{g}/\text{m}^3$ ; 24-hr standard for SO<sub>2</sub>, NO<sub>2</sub>:  $80 \mu\text{g}/\text{m}^3$   
Pre-smog readings: Oct 25-31; smog readings: 4-9 Nov; data from CSE)





# An expert explains: How AI can help chart pathways of sustainable development for India

**The Indian EXPRESS**  
JOURNALISM OF COURAGE

## Expected Question

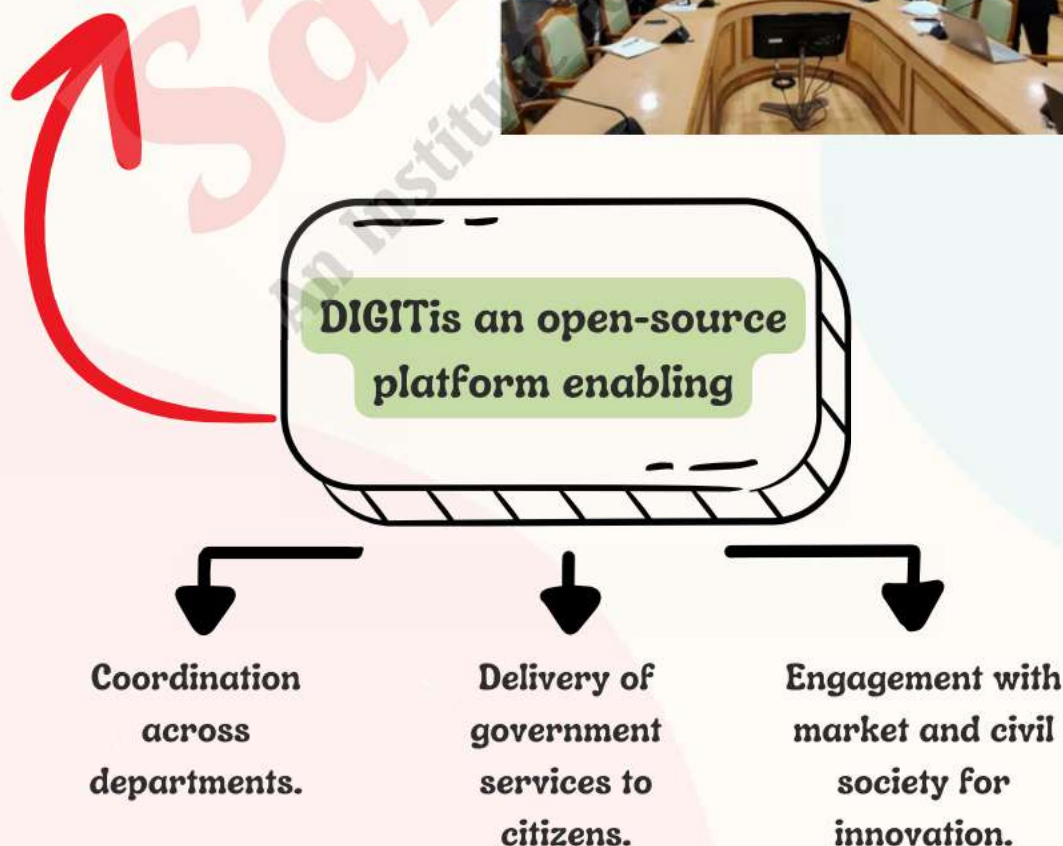
The “DIGIT platform” was recently in the news. It is associated with:

- (a) Medical facilities for Rural areas
- (b) 24\*7 water supply
- (c) Domestic aviation
- (d) Urban governance

## Explanation

- The e-Governance Foundation is developing the next-generation DIGIT platform for urban governance.
- The initiative was part of the 2023-24 Budget with an allocation of ₹990 crore.
- The mandate is to "Make AI in India and Make AI work for India."

Home / Content / Press Releases ANI / DIGIT now the National Platform for Urban Governance, transforming urban landscape  
**DIGIT now the National Platform for Urban Governance, transforming urban landscape**





## Expert Explains: What role UNIFIL plays in Lebanon, India's contribution to it

UNIFIL has said Israel's attack on it is a violation of international law and the UN mandate. Sanjiv Arora, former Indian Ambassador to Lebanon and former head of UN-Political division in MEA, explains the role of the UN peacekeeping force in Lebanon, and India's contribution to it.

### Expected Question

**With reference to the UN peacekeepers in Lebanon (UNIFIL) consider the following statements:**

1. The United Nations Interim Force in Lebanon (UNIFIL) was established by a resolution of the UN Security Council in 1978.
2. The UNIFIL was established to confirm the withdrawal of Israeli forces from southern Lebanon to restore peace and security.

**Which of the statements given above is/are correct?**

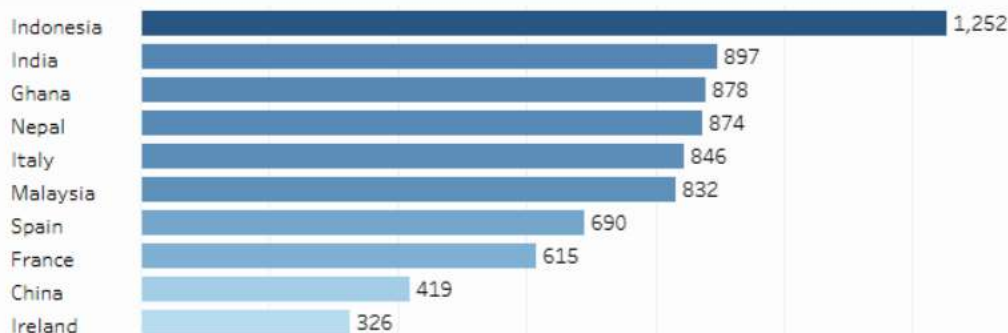
- (a) 1 only
- (b) 2 only
- (c) Both 1 and 2
- (d) Neither 1 nor 2

### Explanation

- The United Nations Interim Force in Lebanon (UNIFIL) was established by a resolution of the UN Security Council in 1978, in response to Israel's invasion of southern Lebanon. Hence, statement 1 is correct.
- According to UN Security Council resolutions 425 and 426, adopted in March 1978, the UNIFIL was established to confirm the withdrawal of Israeli forces from southern Lebanon, restore peace and security, and to help the Lebanese government in restoring its control and authority. Hence, statement 2 is correct.
- Southern Lebanon, which shares a border with Israel, has been the site of repeated conflicts between the IDF and Hezbollah.
- Therefore, option (c) is the correct answer.



**Top ten military contributors (as of December 2024)**





# Direct taxes bring 57% to total revenue, highest in 14 years

## Expected Question

## PYQ 2018

Which of the following statements best explains why direct taxes are considered more progressive than indirect taxes?

- (a) Direct taxes are levied on goods and services, while indirect taxes are imposed on income.
- (b) Direct taxes are linked to an individual's income level, ensuring that higher earners pay more, whereas indirect taxes are uniform for all.
- (c) Direct taxes are paid only by businesses, while indirect taxes are paid by individuals.
- (d) Direct taxes are collected by state governments, while indirect taxes are collected by the central government.

97. Consider the following items :

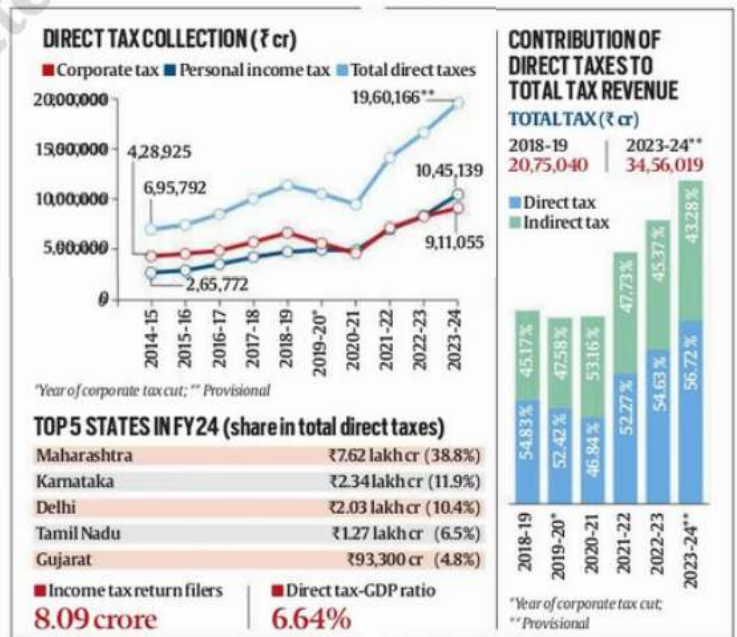
1. Cereal grains hulled
2. Chicken eggs cooked
3. Fish processed and canned
4. Newspapers containing advertising material

Which of the above items is/are exempted under GST (Goods and Services Tax) ?

- (a) 1 only
- (b) 2 and 3 only
- (c) 1, 2 and 4 only
- (d) 1, 2, 3 and 4

## Explanation

- Direct Taxes (e.g., income tax, corporate tax) are paid directly to the government by individuals or entities based on their income or profits. They are progressive in nature because:
- The tax rate increases with income.
- Higher income groups bear a larger share of the tax burden, promoting economic equity.
- Indirect Taxes (e.g., GST, excise duty) are levied on goods and services. They are regressive, as the tax rate is the same for all, regardless of income. Thus, low-income groups bear a relatively higher burden as a percentage of their income.







## New Chief Justice of India Sanjiv Khanna

### Expected Question

Which of the following is/are the required eligibility conditions for the appointment of the Chief Justice of India?

1. the person must have been for at least five years a Judge of a High Court or of two or more such Courts in succession.
2. the person must have been for at least ten years an advocate of a High Court or of two or more such Courts in succession.
3. the person must be in the opinion of the President, a distinguished jurist.

Select the correct answer using the codes given below:

- (a) 1 and 2 only
- (b) 2 and 3 only
- (c) 1 and 3 only
- (d) 1, 2 and 3

### PYQ 2021

88. With reference to Indian judiciary, consider the following statements :

1. Any retired judge of the Supreme Court of India can be called back to sit and act as a Supreme Court judge by the Chief Justice of India with prior permission of the President of India.
2. A High Court in India has the power to review its own judgement as the Supreme Court does.

Which of the statements given above is/are correct?

- (a) 1 only
- (b) 2 only
- (c) Both 1 and 2
- (d) Neither 1 nor 2

### Explanation

Apart from being an Indian citizen, the person must  
(a) have been for at least five years a Judge of a High Court or of two or more such Courts in succession or  
(b) have been for at least ten years an advocate of a High Court or of two or more such Courts in succession, or  
(c) be, in the opinion of the President, a distinguished jurist.

Aspect	Details	Constitutional Article
Appointment	Appointed by the President of India	Article 124(2)
Oath of Office	Administered by the President	Article 124(6)
Tenure	Holds office until the age of 65	Article 124(2)
Removal	Can be removed through impeachment	Article 124(4) & (5)
Power & Jurisdiction	Heads the Supreme Court, supervises courts	Article 129, 141, 142



## Cyclone Dana makes landfall highlights: Over 6 lakh evacuated in West Bengal and Odisha

### Expected Question

Consider the following statements with reference to cyclones:

1. Extratropical cyclones have cold air at their core and derive energy from releasing potential energy when cold and warm air masses interact.
2. Warm fronts or cold fronts are associated with tropical cyclones.

Which of the above given statements are associated with tropical cyclones?

- (a) 1 only
- (b) 2 only
- (c) Both 1 and 2
- (d) Neither 1 nor 2

### PYQ 2020

99. Consider the following statements :

1. Jet streams occur in the Northern Hemisphere only.
2. Only some cyclones develop an eye.
3. The temperature inside the eye of a cyclone is nearly  $10^{\circ}\text{C}$  lesser than that of the surroundings.

Which of the statements given above is/are correct ?

- (a) 1 only
- (b) 2 and 3 only
- (c) 2 only
- (d) 1 and 3 only

### Explanation

- **Extratropical cyclones (mid-latitude cyclones)** occur outside the tropics and have a cold core. They derive energy from the interaction of cold and warm air masses and are always associated with fronts. Statement 1 is correct.
- **Tropical cyclones** form between the Tropics of Cancer and Capricorn. They have a warm core and derive energy from latent heat released during condensation. They do not involve warm or cold fronts. Statement 2 is not correct.

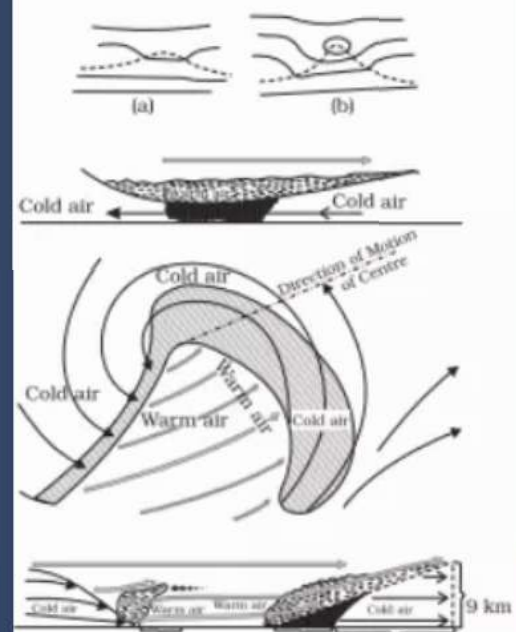


Fig.Extra tropical cyclones



## Taiwan says 'troublemaker' China expands military drills around island

### Expected Question

**Matsu Islands, located in the East China Sea, was recently in the news. The island is governed by:**

- (a) Russia
- (b) Japan
- (c) South Korea
- (d) Taiwan

### PYQ 2022

Which one of the following statements best reflects the issue with Senkaku Islands, sometimes mentioned in the news ?

- (a) It is generally believed that they are artificial islands made by a country around South China Sea.
- (b) China and Japan engage in maritime disputes over these islands in East China Sea.
- (c) A permanent American military base has been set up there to help Taiwan to increase its defence capabilities.
- (d) Though International Court of Justice declared them as no man's land, some South-East Asian countries claim them.

### Explanation

Matsu Island is a small island in the East China Sea that is administered by Taiwan.





## Global Hunger Index 2024 ranks India under 'serious' category

India is among 42 countries that fall within the "serious" category, alongside Pakistan and Afghanistan, with other South Asian neighbours such as Bangladesh, Nepal and Sri Lanka showing better GHI scores to be listed under the "moderate" category.

Updated - October 12, 2024 06:43 pm IST - London

### Expected Question

With reference to Global Hunger Index 2024, consider the following statements:

1. India falls into the "alarming" category as compared to its South Asian neighbours like Bangladesh, Nepal, and Sri Lanka, which fall into the "serious" category.
2. The top three countries worst affected by global hunger crises are located in Africa.

Which of the above statements is/are correct?

- (a) 1 only
- (b) 2 only
- (c) Both 1 and 2
- (d) Neither 1 nor

### PYQ 2015

21. Which one of the following issues the 'Global Economic Prospects' report periodically?

- (a) The Asian Development Bank
- (b) The European Bank for Reconstruction and Development
- (c) The US Federal Reserve Bank
- (d) The World Bank

### Explanation

- India is categorized under the "serious" hunger level with a GHI score of 27.3. In contrast, Sri Lanka is in the "moderate" category with a GHI score of 11.3. This indicates that India's hunger situation is more severe compared to Sri Lanka.
- Somalia and Chad are in Africa, while Yemen is in the Middle East. Therefore, Statement 2 is incorrect

Rank 2024	Country Name	GHI 2024	GHI 2000
127	Somalia	44.1	63.3
126	Yemen	41.2	41.6
125	Chad	36.4	50.5
124	Madagascar	36.3	42.3
123	Democratic Republic of the Congo	34.9	47.2
122	Haiti	34.3	39.8
121	Niger	34.1	53.1
120	Liberia	31.9	48.0
119	Central African Republic	31.5	48.0
118	Korea (DPR)	31.4	43.7

Source: Global Hunger Index 2024





# Union Cabinet approves continuation of free fortified rice supply

Government extends rice fortification initiative across welfare schemes until 2028 to combat anaemia and nutritional deficiencies

## Expected Question

With reference to the rice fortification, consider the following statements:

1. It increases the content of essential micronutrients in food to improve the nutritional quality of food.
2. Fortified rice kernels (FRKs) have a shelf life of at least 12 months.
3. The fortified rice does not contain vitamin B-12.

How many of the statements given above are correct?

- (a) Only one
- (b) Only two
- (c) All three
- (d) None

## PYQ 2010

8. Genetically modified "golden rice" has been engineered to meet human nutritional requirements. Which one of the following statements best qualifies golden rice?
- (a) The grains have been fortified with genes to provide three times higher grain yield per acre than other high yielding varieties
  - (b) Its grains contain pro-vitamin A which upon ingestion is converted to vitamin A in the human body
  - (c) Its modified genes cause the synthesis of all the nine essential amino acids
  - (d) Its modified genes cause the fortification of its grains with vitamin D.

## Explanation

### WHAT IS FORTIFIED RICE?

Fortification is the practice of deliberately increasing the content of an essential micronutrient, i.e. vitamins and minerals (including trace elements) in food to improve its nutritional quality and provide a public health benefit with minimal risk to health



➤ The fortification factor does not last for more than **45 days**, so it isn't advisable to store fortified rice for long

➤ According to National Family Health Survey, **78.7%** children and **75%** in the district are anaemic and suffer from malnutrition

➤ In the first phase, fortified rice will be distributed in Badangi, Bobbili, Ramabhadrapuram and Terlam mandals

- It increases the content of essential micronutrients in food to improve the nutritional quality of food. Hence, statement 1 is correct.
- The kernels are dried, cooled, and packaged. FRK has a shelf life of at least 12 months.
- According to FSSAI norms, 1 kg of fortified rice will contain the following: iron (28 mg-42.5 mg), folic acid (75-125 microgram), and vitamin B-12 (0.75-1.25 microgram). Hence, statement 3 is not correct

Therefore, B is the correct answer.



## Amit Shah launches Bharatpol to streamline criminal probes

### Expected Question

**Q2. With reference to the Bharatpol, consider the following statements:**

1. It is a broadcast hub for assistance and real-time action against transnational crimes via international police cooperation.
2. It was developed by the National Investigation Agency (NIA).
3. It will allow only the central agencies to connect with Interpol and speed up their investigations.
4. It will not investigate the crimes related to drug trafficking and human trafficking.

**Which of the statements given above is/are correct?**

- (a) 1 and 2 only
- (b) 1 only
- (c) 2 and 4 only
- (d) 3 and 4 only

### Explanation

**Answer - B**

#### ABOUT THE BHARATPOL PORTAL

A CBI-developed platform to enhance international cooperation in criminal investigations.

Designed for real-time sharing of information among Indian law enforcement agencies (LEAs).

Centralizes all INTERPOL-related processes, including:

- Issuing Red Notices and other color-coded INTERPOL notices.
- Streamlining international assistance requests for transnational crimes.

#### KEY BENEFITS

##### Enhances Efficiency

- Reduces response time for international crime assistance.
- Streamlines communication between multiple agencies.

##### Addresses Modern Crime Challenges

- Tackles cybercrimes, human trafficking, financial fraud, and organized crimes.
- Supports faster tracking and action on transnational criminal networks.

##### Strengthens India's Global Coordination

- Boosts collaboration with global law enforcement through INTERPOL.

#### HOW IT WORKS

**Access Point:** Available through the official CBI website.

**Real-Time Integration:** Connects CBI, INTERPOL Liaison Officers (ILOs), and Unit Officers (UOs).

Replaces outdated communication methods like letters and faxes with a modernized, efficient system.

Empowers field-level officers to access global resources instantly for investigations.



# Why a proposed Eco-Sensitive Zone around Gir forest is facing protests

**The Indian EXPRESS**  
JOURNALISM OF COURAGE

Leaders of both the ruling BJP and opposition parties like the AAP have protested against the proposed ESZ around Gir. What led to the protests and why are ESZs declared? We explain

## Expected Question

Consider the following wildlife sanctuaries:

1. Gir Wildlife Sanctuary
2. Paniya Wildlife Sanctuary
3. Mitiyala Wildlife Sanctuary

How many of the sanctuaries given above form a part of Gir Protected Area?

- (a) Only one
- (b) Only two
- (c) All three
- (d) None

## PYQ 2020

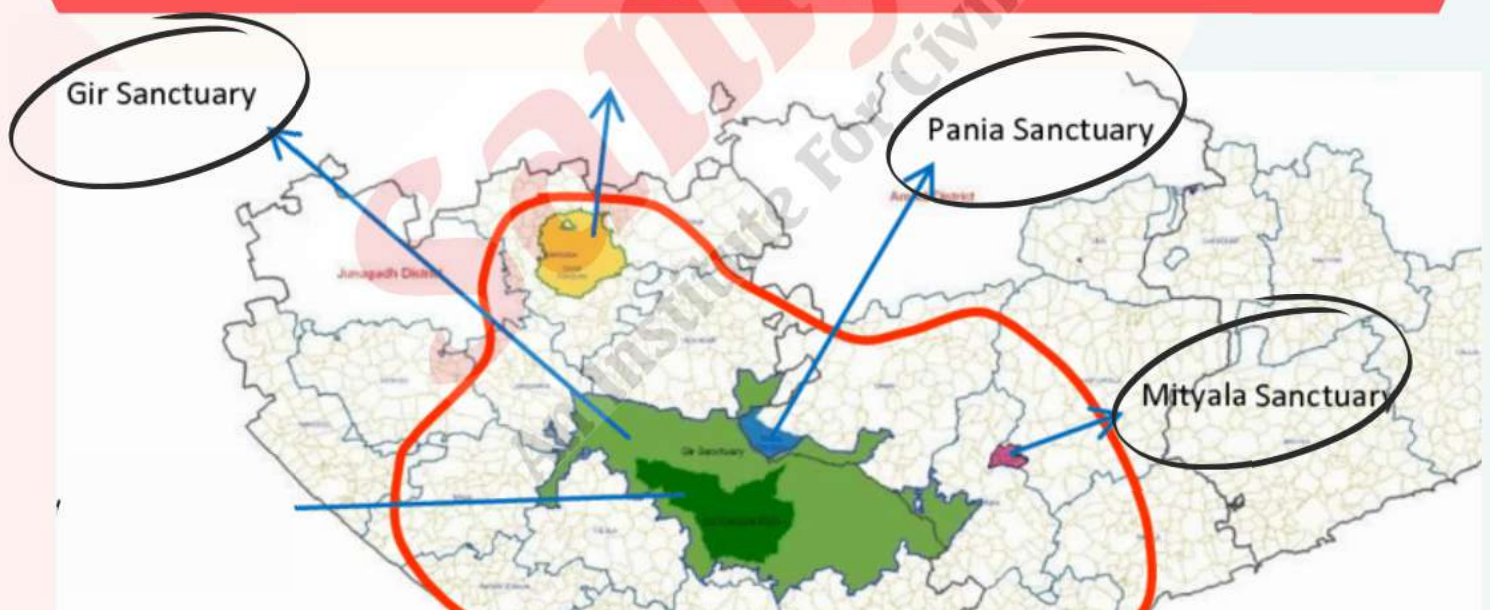
Which of the following Protected Areas are located in Cauvery basin ?

1. Nagarhole National Park
2. Papikonda National Park
3. Sathyamangalam Tiger Reserve
4. Wayanad Wildlife Sanctuary

Select the correct answer using the code given below :

- (a) 1 and 2 only
- (b) 3 and 4 only
- (c) 1, 3 and 4 only
- (d) 1, 2, 3 and 4

## Explanation



**Gir Protection Area** includes the Gir National Park, the *Gir Wildlife Sanctuary*, the *Paniya Wildlife Sanctuary* and the *Mitiyala Wildlife Sanctuary*, spread across the Junagadh, Amreli and Gir Somnath districts in Gujarat's Saurashtra region in its south. Therefore, C is the correct answer



# Which are India's 5 new 'classical languages', what does the tag mean?

Following demands from various states, the UPA-1 government decided to create a category of Indian languages known as "classical languages", and lay down various criteria for this status.

## Expected Question

**Consider the following languages:**

1. Pali
2. Prakrit
3. Marathi
4. Punjabi
5. Gujarati

**Which of the languages given above have been recently designated as the classical language?**

- (a) 1, 2 and 3
- (b) 1, 2, 4 and 5
- (c) 3, 4 and 5
- (d) 1, 2, 3, 4 and 5

## PYQ 2014

Consider the following languages :

1. Gujarati
2. Kannada
3. Telugu

Which of the above has/have been declared as 'Classical Language/ Languages' by the Government?

- (a) 1 and 2 only
- (b) 3 only
- (c) 2 and 3 only
- (d) 1, 2 and 3

## PYQ 2015

Which one of the following was given classical language status recently?

- (a) Odia
- (b) Konkani
- (c) Bhojpuri
- (d) Assamese

## Explanation

**The Linguistic Experts Committee (LEC) unanimously revised the criteria for classical status. The criteria now include:**

- (i) High antiquity of early texts, and recorded history over a period of 1500- 2000 years;
- (ii) A body of ancient literature/ texts, which is considered a heritage by generations of speakers;
- (iii) Epigraphic and inscriptional evidence;
- (iv) Knowledge texts, especially prose texts in addition to poetry; and

**The classical languages and literature could be distinct from its current form or could be discontinuous with later forms of its offshoots.**

**The committee also recommended following languages to be fulfilling revised criteria to be considered as a Classical Language.**

- Marathi
  - Pali
  - Prakrit
  - Assamese
  - Bengali
- 



# As green patch spreads in Antarctica, here's what is worrying scientists

In a new analysis, researchers used satellite imagery and data to conclude that the extent of vegetation in the Antarctic Peninsula has increased 14 times in just 35 years.

## Expected Question

Consider the following statements:

**Statement 1:** Plant cover across the Antarctic Peninsula has increased more than 10 times over the past few decades.

**Statement 2:** The Antarctic continent is warming twice as fast as the global average, at a rate of between 0.22 degrees Celsius and 0.32 degrees Celsius per decade.

**Which one of the following is correct in respect of the above statements?**

- (a) Both Statement 1 and Statement 2 are correct and Statement 2 is the correct explanation for Statement 1.
- (b) Both Statement 1 and Statement 2 are correct and Statement 2 is not the correct explanation for Statement 1.
- (c) Statement 1 is correct but Statement 2 is incorrect.
- (d) Statement 1 is incorrect but Statement 2 is correct.

## Explanation

- Plant cover across the Antarctic Peninsula has increased over 10 times in recent decades due to rising temperatures — indicating rapid ecological change. (Statement 1 is correct).
- A study published in Nature Geoscience by researchers from the University of Exeter, University of Hertfordshire, and the British Antarctic Survey supports this finding.
- Additionally, a 2023 study in Nature Climate Change noted that Antarctica is warming at twice the global average, with temperatures rising by 0.22 to 0.32°C per decade. (Statement 2 is correct).

Therefore, A is the correct answer





# PM meets Laos counterpart, holds talks on ways to strengthen ties

**The Indian EXPRESS**  
JOURNALISM OF COURAGE

The two PMs held productive talks on further strengthening India-Laos civilisational and contemporary ties, as per a statement by the MEA.

## Expected Question

Vat Phou, a UNESCO World Heritage Site, is under restoration and conservation by the Archaeological Survey of India (ASI) is located in:

- (a) Vietnam
- (b) Malaysia
- (c) Indonesia
- (d) Laos

## PYQ 2024

Which one of the following was the latest inclusion in the Intangible Cultural Heritage List of UNESCO ?

- (a) Chhau dance
- (b) Durga puja
- (c) Garba dance
- (d) Kumbh mela

## Explanation



- Prime Minister Narendra Modi met Laos PM Sonexay Siphandone in Vientiane and congratulated him for hosting the 21st ASEAN-India and 19th East Asia Summits.
- They highlighted the ongoing restoration of **Vat Phou**, a UNESCO World Heritage Site, with ASI's support, as a special aspect of India-Laos ties.

Therefore, D is the correct answer



# Isro's AstroSat catches never-before-seen nuclear explosion in Andromeda Galaxy

The researchers identified ultraviolet emissions from 42 novae, including four caught in the act of erupting.

## Expected Question

With reference to the AstroSat, consider the following statements:

1. It is the first dedicated Indian astronomy mission aimed at studying celestial sources in X-ray and UV spectral bands simultaneously.
2. It enables the simultaneous multi-wavelength observations of various astronomical objects with a single satellite.

Which of the statement(s) given above is/are correct?

- (a) 1 only
- (b) 2 only
- (c) Both 1 and 2
- (d) Neither 1 nor 2

## PYQ 2016

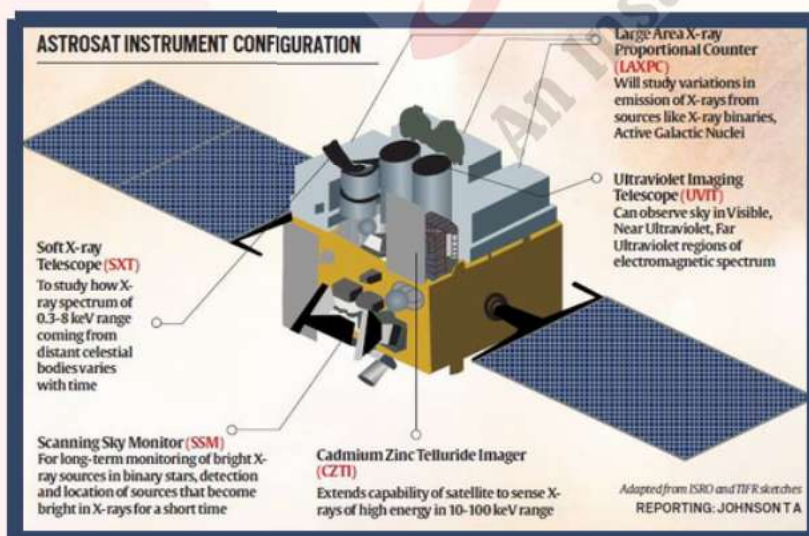
With reference to 'Astrosat', the astronomical observatory launched by India, which of the following statements is/are correct?

1. Other than USA and Russia, India is the only country to have launched a similar observatory into space.
2. Astrosat is a 2000 kg satellite placed in an orbit at 1650 km above the surface of the Earth.

Select the correct answer using the code given below.

- (a) 1 only
- (b) 2 only
- (c) Both 1 and 2
- (d) Neither 1 nor 2

## Explanation



- AstroSat is India's first dedicated astronomy project, with the goal of researching celestial sources in the X-ray, optical, and UV spectral bands simultaneously. Hence, statement 1 is correct.
- The AstroSat mission is unique in that it allows for simultaneous multi-wavelength studies of multiple celestial objects from a single satellite. Hence, statement 2 is correct.

Therefore, C is the correct answer.





Prime Minister's participation in the 21st ASEAN-India Summit in Lao PDR

October 10, 2024

Prime Minister's participation in the 19th East Asia Summit

October 11, 2024

Prime Minister (PM) attended the 19th East Asia Summit (EAS) on 11 October 2024 in Vientiane, Lao PDR.

## Expected Question

Consider the following statements with reference to

**International organisations:**

1. The East Asia Summit (EAS) process was initiated in 2010 the ASEAN Member States, China, India, Japan, and Russia.
2. In 1967, Foreign Ministers of Indonesia, Malaysia, the Philippines, Singapore and Thailand – came together to sign the ASEAN declaration.
3. While India was part of negotiations to join the Regional Comprehensive Economic Partnership (RCEP) in 2020, it ultimately decided not to do so.

**Which of the statements given above are correct?**

- (a) 1 and 2 only
- (b) 2 and 3 only
- (c) 1 and 3 only
- (d) 1, 2 and 3

## PYQ 2015

The 'Fortaleza Declaration', recently in the news, is related to the affairs of

- (a) ASEAN
- (b) BRICS
- (c) OECD
- (d) WTO

### ASSOCIATION OF SOUTHEAST ASIAN NATIONS



## Explanation

- The East Asia Summit (EAS) process was initiated in 2005 with 16 participating countries, namely the ASEAN Member States, Australia, China, India, Japan, New Zealand, and the Republic of Korea. The United States and the Russian Federation joined later on. Hence, statement 1 is not correct.
- India was part of negotiations to join the Regional Comprehensive Economic Partnership (RCEP) in 2020, it ultimately decided not to do so. Hence, statement 3 is correct.
- In 1967, Foreign Ministers of Indonesia, Malaysia, the Philippines, Singapore and Thailand – came together to sign the ASEAN declaration. Hence, statement 2 is correct.

Therefore, option (b) is the correct answer.



# 10 years of Swachh Bharat Mission: Its aims and status on key targets

## Expected Question

Consider the following statements about the Swachh

**Bharat Mission (SBM):**

1. It was launched on October 2, 2016.
2. SBM focus areas were building individual and community toilets and solid waste management.
3. The SBM-Urban for cities is executed by the Ministry of Drinking Water and Sanitation.

**How many of the statements given above are correct?**

- (a) Only one
- (b) Only two
- (c) All three
- (d) None

## PYQ 2015

Consider the following statements :

1. The India Sanitation Coalition is a platform to promote sustainable sanitation and is funded by the Government of India and the World Health Organization.
2. The National Institute of Urban Affairs is an apex body of the Ministry of Housing and Urban Affairs in Government of India and provides innovative solutions to address the challenges of Urban India.

Which of the statements given above is/are correct ?

- (a) 1 only
- (b) 2 only
- (c) Both 1 and 2
- (d) Neither 1 nor 2

## Explanation

- Swachh Bharat Mission, one of the first programmes announced by Prime Minister Narendra Modi after he took office in 2014, completes 10 years on October 2. Hence, statement 1 is not correct.
- The mission was divided into SBM-Gramin for villages, and SBM-Urban for cities, executed by the Ministry of Drinking Water and Sanitation, and the Ministry of Housing and Urban Affairs respectively. Hence, statement 3 is not correct.
- SBM's focus areas were building individual toilets, community toilets, solid waste management, and leading awareness campaigns aimed at behavioural changes. Hence, statement 2 is correct.





# What is Clause 6 of Assam Accord, which Himanta govt said will implement?

Notably, 15 key recommendations of the Justice Biplab Sarma Committee will not be implemented for the time being. These, CM Himanta said, will require Constitutional amendments. Here's all you need to know about the issue.

## Expected Question

**With reference to the Assam Accord, consider the following statements:**

1. It was a Memorandum of Settlement between the Union government and the leadership of the Assam Movement, primarily the All Assam Students' Union (AASU).
2. It was signed in 1965.
3. The Assam accord ended the six-year-long agitation in Assam against the entry of Bangladeshi migrants into the state.
4. There is no clause to protect, preserve and promote the culture and heritage of the Assamese people.

**Which of the statements given above are correct?**

- (a) 1, 3 and 4
- (b) 1, 2 and 4
- (c) 1 and 3 only
- (d) 2 and 3 only

## PYQ 2015

Consider the following statements :

1. The India Sanitation Coalition is a platform to promote sustainable sanitation and is funded by the Government of India and the World Health Organization.
2. The National Institute of Urban Affairs is an apex body of the Ministry of Housing and Urban Affairs in Government of India and provides innovative solutions to address the challenges of Urban India.

Which of the statements given above is/are correct ?

- (a) 1 only
- (b) 2 only
- (c) Both 1 and 2
- (d) Neither 1 nor 2

## Explanation

- The Assam Accord was a Memorandum of Settlement signed in 1985 between the Rajiv Gandhi-led Union government and the All Assam Students' Union (AASU). (Statement 1 is correct; Statement 2 is not correct).
- It marked the end of a six-year-long agitation against illegal Bangladeshi migrants in Assam. (Statement 3 is correct).

Therefore, option (c) is the correct answer.

## ASSAM ACCORD CLAUSE 5 & CITIZENSHIP

**IN 1979**, All Assam Students Union (AASU) began an agitation demanding the identification and deportation of "illegal foreigners", predominantly from Bangladesh. The agitation went on for six years, culminating with the historic Assam Accord between the Central and state governments, and the leaders of the Assam Movement.

**CLAUSE 5** of the Accord, which discussed the "Foreigners Issue", set January 1, 1966 as the "base date and year" for the "purposes of detection and deletion [from electoral rolls] of foreigners". Those who arrived after this date but up to March 24, 1971, would "have their names deleted

from electoral rolls" for 10 years, after which their names would be restored.

**IN 1985**, in order to give effect to the Assam Accord, Section 6A was introduced in The Citizenship Act, 1955. The petitioners argued that this section was arbitrary and discriminatory, as it applied only to Assam.

**THE CAA**, 2019, introduced another group-specific section, Section 6B, in The Citizenship Act, which set December 31, 2014 as the cutoff date for Hindu, Christian, Sikh, Parsi, Buddhist, and Jain migrants from the Muslim majority countries of Pakistan, Bangladesh, Afghanistan.





Health

## Why light pollution may be linked to greater risk of Alzheimer's disease

*Exposure to light at night can disturb sleep and also interrupt a person's circadian rhythm*

**DownToEarth**

### Expected Question

**PYQ 2021**

With reference to Alzheimer's, consider the following statements:

1. It is the most common type of dementia.
2. Recent research has found a correlation between light pollution at night and the incidence of Alzheimer's disease.
3. It involves the formation of plaques and tangles in the brain.
4. There is no cure available for this disease.

How many of the statements given above are correct?

- (a) Only one
- (b) Only two
- (c) Only three
- (d) All four

In the context of hereditary diseases, consider the following statements :

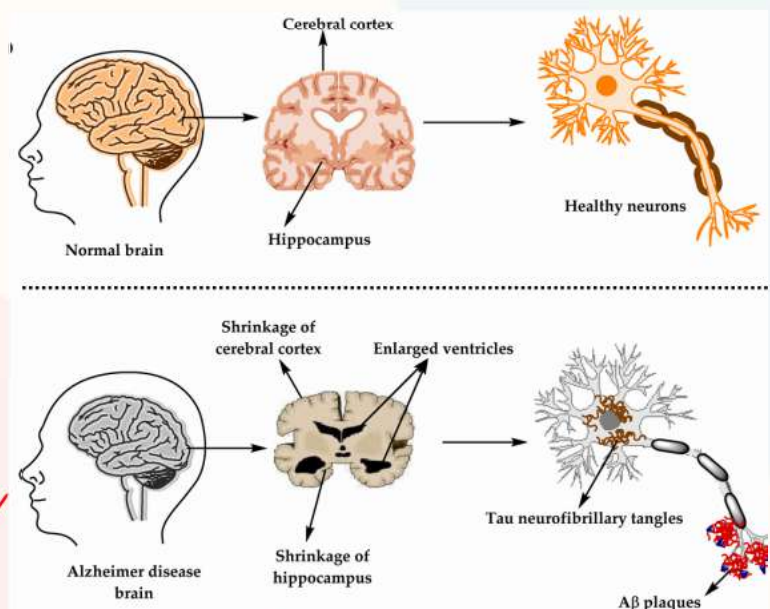
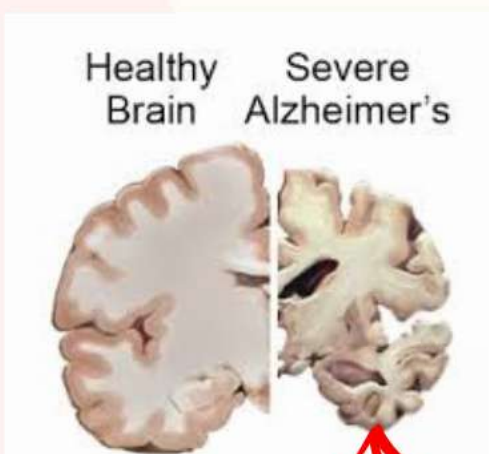
1. Passing on mitochondrial diseases from parent to child can be prevented by mitochondrial replacement therapy either before or after *in vitro* fertilization of egg.
2. A child inherits mitochondrial diseases entirely from mother and not from father.

Which of the statements given above is/are correct?

- (a) 1 only
- (b) 2 only
- (c) Both 1 and 2
- (d) Neither 1 nor 2

### Explanation

- A US study has found a link between light pollution at night and the risk of Alzheimer's disease. (Statement 2 is correct).
- Researchers from Rush University Medical Center noted that artificial light at night may influence Alzheimer's development.
- Alzheimer's, the most common form of dementia, involves cognitive decline, plaque and tangle formation in the brain, and accelerated aging of memory-related neurons. (Statements 1 and 3 are correct).





# Centre's new BioE3 policy: How can biotechnology be harnessed for economic development?

The policy seeks to achieve this by harnessing the power of biotechnology, and developing new manufacturing methods that replicate, or mimic, processes found in natural biological systems.

## Expected Question

The Centre unveiled its BioE3 policy to harness the power of biotechnology. The E3 refers to:

1. Energy
2. Employment
3. Environment
4. Economy

Select the correct answer using the codes given below:

- (a) 1, 2 and 3 only
- (b) 2, 3 and 4 only
- (c) 1, 2 and 4 only
- (d) 1, 3 and 4 only

## PYQ 2020

According to India's National Policy on Biofuels, which of the following can be used as raw materials for the production of biofuels?

1. Cassava
2. Damaged wheat grains
3. Groundnut seeds
4. Horse gram
5. Rotten potatoes
6. Sugar beet

Select the correct answer using the code given below :

- (a) 1, 2, 5 and 6 only
- (b) 1, 3, 4 and 6 only
- (c) 2, 3, 4 and 5 only
- (d) 1, 2, 3, 4, 5 and 6

## Explanation

- The Centre unveiled its BioE3 (Biotechnology for Economy, Environment and Employment) policy. The policy appears to be a routine attempt to create incentives and opportunities to energise growth in the biotech sector.





# Government constitutes 23rd Law Commission President Murmu gives approval

## Expected Question

**Q. With reference to the Law Commission, consider the following statements:**

1. It is a statutory commission.
2. The commission is usually chaired by a retired judge of the Supreme Court or a High Court.
3. Serving judges cannot be appointed to the commission.
4. The recommendations of the report are binding on the government.

**How many of the statements given above are correct?**

- (a) Only one
- (b) Only two
- (c) Only three
- (d) All four

## PYQ 2011

With reference to the Finance Commission of India, which of the following statements is correct ?

- (a) It encourages the inflow of foreign capital for infrastructure development
- (b) It facilitates the proper distribution of finances among the Public Sector Undertakings
- (c) It ensures transparency in financial administration
- (d) None of the statements (a), (b) and (c) given above is correct in this context

## Explanation

- The statute Commission is a non-statutory commission (not founded by a statute of Parliament) established by the Union Ministry of Law and Justice through a gazette notification. Hence, statement 1 is not correct.
  - The commission is usually chaired by a retired judge of the Supreme Court or a High Court, and has legal scholars as members. Hence, statement 2 is correct.
  - Serving judges can also be appointed to the commission, according to the notification on the appointment of the new panel. Hence, statement 3 is not correct.
- Therefore, option (a) is the correct answer.

### Purpose & Role:

- Established to assist the government in reviewing the operation of laws and recommending necessary reforms.
- Proposes the repeal of outdated legislation and suggests new legal frameworks for contemporary issues.
- Provides recommendations on matters referred by the government, ensuring legal modernization.

### Law Commission of India

### Impact & Contributions

- Since Independence, 22 Law Commissions have been constituted.
- 289 reports submitted, addressing key legal and policy issues.
- Government is not obligated to implement recommendations; Many have shaped major legislative reforms, such as:
  - Code of Criminal Procedure, 1973 (CrPC)
  - (RTE Act)– Ensured free and mandatory education for children.



# Why PM Narendra Modi's visit to Singapore is significant for India's semiconductor push

Focus on chip manufacturing during PM Modi's visit to Singapore is of great geo-strategic and geo-economic importance. Singapore was an early mover in the industry, and collaboration with it carries much promise.

## Expected Question

**The application of semiconductor covers:**

1. Integrated circuit (IC) design
2. Packaging and testing
3. Raw material production
4. Wafer fabrication

**Select the correct answer using the codes given below:**

- (a) 1, 2 and 3 only
- (b) 3 and 4 only
- (c) 1 and 2 only
- (d) 1, 2, 3 and 4

## PYQ 2008

**Which one of the following laser types is used in a laser printer?**

- (a) Dye laser
- (b) Gas laser
- (c) Semiconductor laser
- (d) Excimer laser

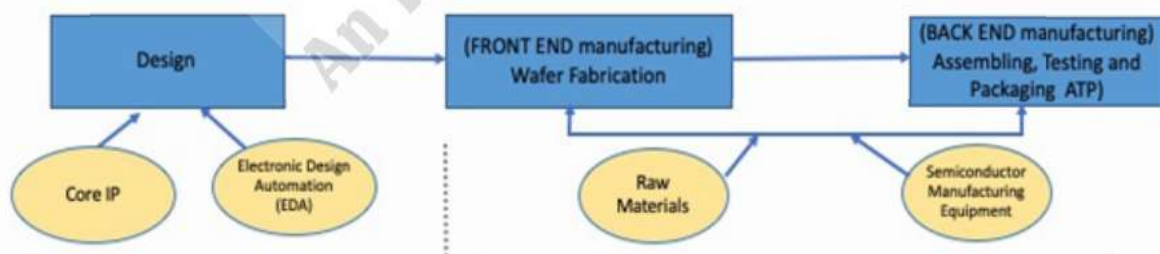
## Explanation

**All stages of the semiconductor value chain — including integrated circuit (IC) design, wafer fabrication, assembly, packaging, testing, as well as the manufacturing of equipment and raw materials — are covered.**

**Singapore:** Advanced Processors like CPU, GPU, Silicon carbide (SiC) chips, Mosfets, etc.  
**India:** Advanced Processors like CPU, GPU; FPGA/ASIC/System-on-Chip (SoC) Design; Analog, Digital & Mixed-Signal Design, etc.

**Singapore:** Mature nodes (>28nm), Limited in advanced nodes of 7nm ; 5% of global wafer capacity (fabrication and production)  
**India:** Beginner in semiconductor fabs and chip production

**Singapore:** Advanced OSAT;  
**India:** Beginner in ATP



### Core IP & EDA

**Singapore:** Strong pre-competitive R&D; IC design, EDA software  
**India:** Strong pre-competitive R&D; Hub of EDA software tools and IC design; IP Core integration; Lacking a significant local design ecosystem (Core IP and EDA)

### MATERIALS

**Singapore:** Wafer components; Chemicals and gases; Packaging substrates  
**India:** Relies on imports of wafer requirements; Locally produces chemicals and gases but requires an upgrade to semiconductor grade; Emerging in lead frames and packaging materials

### EQUIPMENT & TOOLS

**Singapore:** 20% global chip equipment production—Tools/Equipment for Photoresist, Etching, Testing, Deposition, Wafer Inspection  
**India:** Limited Deposition, Etching, and Cleaning; Limited in ATP equipment and Testing and Validation Tools



# New study suggests existence of a dockyard at Lothal, Gujarat, during Harappan Civilisation: What are the findings?

**The Indian EXPRESS**  
JOURNALISM OF COURAGE

The study has revealed that the Sabarmati river used to flow by Lothal (currently, it flows 20 km away from the location) during the Harappan Civilisation

## Expected Question

Consider the following statements:

1. The site is located in the Bhal region of Gujarat.
2. The study has revealed that the Sabarmati river used to flow by this site.
3. The National Maritime Heritage Complex (NMHC) is being constructed at this place.
4. It was a thriving trade centre in ancient times, with its trade of beads, gems and ornaments reaching West Asia and Africa.

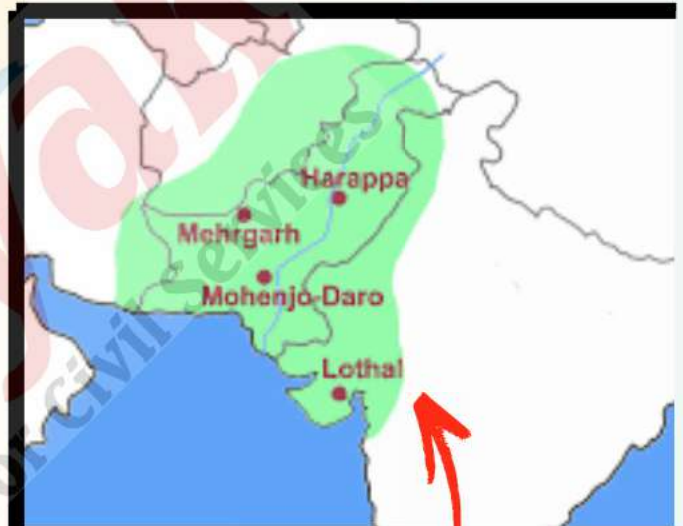
The above mentioned statements refer to:

- (a) Dholavira
- (b) Surkotada
- (c) Desalpur
- (d) Lothal

## PYQ 2008

Which one of the following is **not** a Harappan site?

- (a) Chanhudaro
- (b) Kot Diji
- (c) Sohgaora
- (d) Desalpur



## Explanation

### Lothal

- Scholars have long debated the presence of a dockyard at **Lothal (Bhal region, Gujarat)**, discovered in the 1950s.
- IIT-Gandhinagar's recent study confirms the dockyard theory, revealing that the Sabarmati River once flowed near the site, enhancing its strategic trade position.
- Satellite imagery shows ancient river channels connecting Lothal to Koth and the Little Rann of Kachchh via Nal Sarovar, supporting its role in inland and maritime trade.
- Lothal, built around 2200 BCE, was the southernmost IVC site, known for trading beads, stones, and ornaments with West Asia and Africa.
- The National Maritime Heritage Complex (NMHC) is being developed at the site.
- The name Lothal means "mound of the dead" in Gujarati.



# Genome mapping of Chandipura virus: what researchers found

**The Indian EXPRESS**  
JOURNALISM OF COURAGE

The Chandipura virus has not evolved much since the 2003, when India saw its deadliest ever outbreak.

## Expected Question

**Q. With reference to the genome mapping, consider the following statements:**

1. It refers to the process of determining the location of genes on an organism's chromosomes.
2. It provides important clues on where a virus comes from and how it is changing.

**Which of the statements given above is/are correct?**

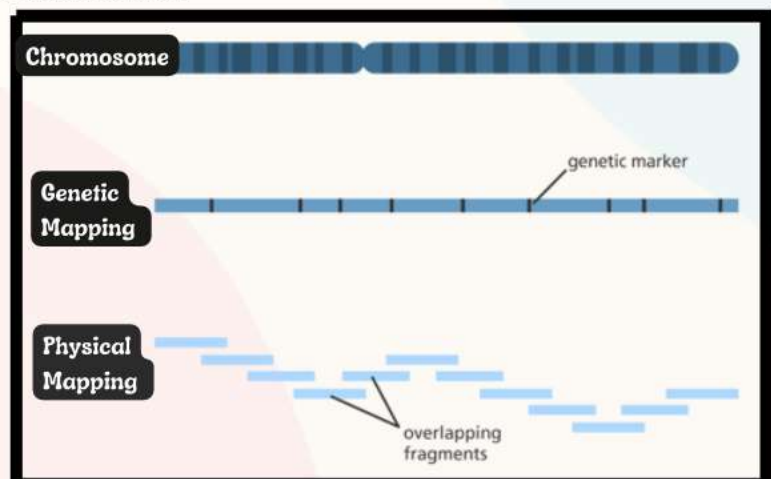
- (a) 1 only
- (b) 2 only
- (c) Both 1 and 2
- (d) Neither 1 nor 2

## Explanation

### Genome Mapping and Its Significance

- Genome mapping identifies the locations of genes on chromosomes. Scientists at GBRC used it to study a virus affecting children.
- It helps trace the origin and evolution of viruses and detect changes that may increase their transmissibility or severity.
- Genome sequencing aids in monitoring viruses with potential to cause future epidemics.

Therefore, option (c) is the correct answer.





## How Telegram CEO Pavel Durov's arrest in France could possibly upend 'safe harbour' protection

How can a platform that allows its users to post their independent content be held liable for what appears on it? That is the heart of the safe harbour logic. How could France then arrest the chief of Telegram?

### Expected Question

**'Safe harbour protection', recently seen in news is in reference to:**

- (a) Money laundering
- (b) Social media platforms
- (c) Irregularities in sports
- (d) Manned missions in space

### Explanation

#### Safe Harbour Rules



Safe Harbour rules refer to legal provisions that protect online platforms from liability for user-generated content, provided they adhere to certain conditions.

These rules acknowledge that digital platforms, such as social media websites, search engines, and online marketplaces, do not have direct control over the content posted by users in real time.



**Therefore, option (b) is the correct answer.**



# 500 days of the Sudan war: What is happening — and what happens next?

As the situation further deteriorates in Sudan with no signs of a ceasefire agreement in the near future, experts believe that the war could kill millions and become a geo-political nightmare.

## Expected Question

Which of the following African countries have marked 500 days of war between the armed forces and support forces leading to the death of thousands of people?

- (a) Libya
- (b) Botswana
- (c) Nigeria
- (d) Sudan

## PYQ 2024

17. Consider the following pairs :

	Country	Reason for being in the news
1.	Argentina	Worst economic crisis
2.	Sudan	War between the country's regular army and paramilitary forces
3.	Turkey	Rescinded its membership of NATO

How many of the pairs given above are correctly matched ?

- (a) Only one pair
- (b) Only two pairs
- (c) All three pairs
- (d) None of the pairs

## Explanation



Sudan's war has lasted more than 500 days. Thousands of civilians have died as a result of conflict between the Sudanese Armed Forces (SAF) and Rapid Support Forces (RSF).

Therefore, option (d) is the correct answer.



## PM Modi leaves for two-nation visit to Brunei and Singapore

### Expected Question

**Q. Consider the following statements:**

1. The first phase of Indians arriving in this country started with the discovery of oil in the 1920s.
2. This country is part of India's 'Act East' Policy and Indo-Pacific Vision.
3. This country has almost one-fourth of its residents as temporary residents.

**The above mentioned statements refer to which country?**

- (a) Philippines
- (b) Vietnam
- (c) Brunei
- (d) Laos

### PYQ 2011

**42. With reference to "Look East Policy" of India, consider the following statements:**

1. India wants to establish itself as an important regional player in the East Asian affairs.
2. India wants to plug the vacuum created by the termination of Cold War.
3. India wants to restore the historical and cultural ties with its neighbours in Southeast and East Asia.

**Which of the statements given above is/are correct?**

- (a) 1 only
- (b) 1 and 3 only
- (c) 3 only
- (d) 1, 2 and 3

### Explanation



#### India-Brunei Relations (2023)

- Population: Approx. 450,500
- 76% Brunei citizens; majority are Malay or Chinese ethnic groups.

#### Indian Community:

- First wave arrived in 1920s after oil discovery.
- Around 14,000 Indians live in Brunei today.
- Indian doctors and teachers are highly valued for their contribution to healthcare and education.

#### Strategic Partnership:

- Brunei is a significant partner in India's Act East Policy and Indo-Pacific vision.
- The Act East Policy (successor to Look East) strengthens India's ties with Southeast Asia.

Therefore, Correct answer: (c)



# Sindhudurg, the Maratha fort that cemented Shivaji Maharaj's naval dominance

The 35-foot statue of Chhatrapati Shivaji Maharaj in Malvan that collapsed recently was built less than a year ago. In contrast, the Sindhudurg Fort, which Shivaji Maharaj built 357 years ago, still stands strong. The fort is a proud symbol of the Maratha Navy, and the technology behind its construction.

## Expected Question

**Sindhudurg fort is associated to which historical personality**

- (a) Maharana Pratap
- (b) Rani Lakshmi Bai
- (c) Chhatrapati Shivaji
- (d) Ahilya Bai Holkar

## PYQ 2024

56. Who of the following rulers of medieval India gave permission to the Portuguese to build a fort at Bhatkal ?

- (a) Krishnadevaraya
- (b) Narasimha Saluva
- (c) Muhammad Shah III
- (d) Yusuf Adil Shah

## Explanation

The 35-foot statue of Chhatrapati Shivaji Maharaj in Malvan that collapsed recently was built less than a year ago. In contrast, the Sindhudurg Fort, which Shivaji Maharaj built 357 years ago, still stands strong. The fort is a proud symbol of the Maratha Navy, and the technology behind its construction.

Therefore, option (c) is the correct answer.

**Born on 19th February 1630 at Shivneri Fort, Pune**

**Crowned as Chhatrapati on 6th June 1674 at Raigad Fort.**



**Established an independent Hindavi Swarajya, resisting Mughal and Deccan Sultanate rule.**

**The Maratha Empire expanded significantly in the 18th century, becoming the dominant power in India.**





## News Updates

**Cabinet approves health coverage to all senior citizens of the age 70 years and above irrespective of income under Ayushman Bharat Pradhan Mantri Jan Arogya Yojana (AB PM-JAY)**

14 Feb 2024



### Expected Question

**With reference to the Ayushman Bharat Pradhan Mantri Jan Arogya Yojana (AB PM-JAY), consider the following statements:**

1. It is the world's largest public health insurance scheme.
2. It provides free cover upto Rs 5 lakh annually to all members of eligible families.
3. This scheme covers citizens above the age of 60 years.

**How many of the statements given above are correct?**

- (a) Only one
- (b) Only two
- (c) All three
- (d) None

### PYQ 2022

**19. With reference to Ayushman Bharat Digital Mission, consider the following statements :**

1. Private and public hospitals must adopt it.
2. As it aims to achieve universal health coverage, every citizen of India should be part of it ultimately.
3. It has seamless portability across the country.

**Which of the statements given above is/are correct ?**

- (a) 1 and 2 only
- (b) 3 only
- (c) 1 and 3 only
- (d) 1, 2 and 3

### Explanation

- **Statement 1: Correct-** AB PM-JAY is currently the world's largest public health insurance scheme.
- **Statement 2: Correct-** It offers free coverage up to ₹5 lakh per year to all members of eligible families (bottom 40% of the population economically), regardless of age.
- **Statement 3: Not Correct-** The recent Cabinet decision approved health coverage for all Indians aged 70 and above, irrespective of income, as a new expansion—not a core part of the original scheme.

Therefore, option (b) is the correct answer.

#### What is Ayushman Bharat?

Ayushman Bharat Pradhan Mantri Jan Arogya Yojana (AB PM-JAY) is a scheme to provide health cover or health insurance of up to Rs 5 lakh per family per year.



#### Who is eligible?



PM-JAY has been rolled out for the bottom 40% of the poor and vulnerable population, targeting approximately 12 crore households. The inclusion of households is based on the criteria mentioned in the Socio-Economic Caste Census 2011 for rural and urban areas.

#### How are claims checked/verified?



Typically, the patient or one of her relatives approaches the Ayushman Bharat Counter, where the patient's identity is verified. The information provided by the treating doctor is fed into an online portal and sent to State Health Authorities (SHA) for approval. The completed indent form is dispatched to Amrit Pharmacy, which offers free treatment/implants at no cost to the patient.



# What are the Commons and why is community leadership needed to govern them?

 **The Indian EXPRESS**  
JOURNALISM OF COURAGE

Commons is a term used to refer to resources that are not owned by any individual or group or the government, but belong to, and are shared by, the community as a whole

## Expected Question

PYQ 2022

The term “Commons” was recently in the news. Consider the following statements:

1. It is a term used to refer to resources that are owned by the government.
2. For the first time, India hosted a dialogue on the conservation, restoration and governance of common resources.
3. Local Ponds are not a part of the Commons.

Which of the statements given above is/are correct?

- (a) 1 and 2 only
- (b) 2 only
- (c) 2 and 3 only
- (d) 1 only

## Explanation

- **Statement 2 is correct** - A unique debate was recently held in Delhi on the protection, restoration, and governance of common resources like forests, community lands, and water bodies (lakes, rivers).
- **Statement 1 is not correct**:- The term "commons" refers to resources shared by the entire community, not owned by any individual, group, or government.
- **Statement 3 is not correct**-Commons include forests, ponds, grazing lands, rivers, and sacred sites.

However, parks and lakes in cities are considered public spaces, not commons.



## Disengagement of troops in four areas in Eastern Ladakh, border situation stable, China says

### Expected Question

What is the correct chronological order of these places from north to south?

1. Pangong Lake
2. Gogra Hot Spring
3. Demchok

Select the correct answer using the codes given below:

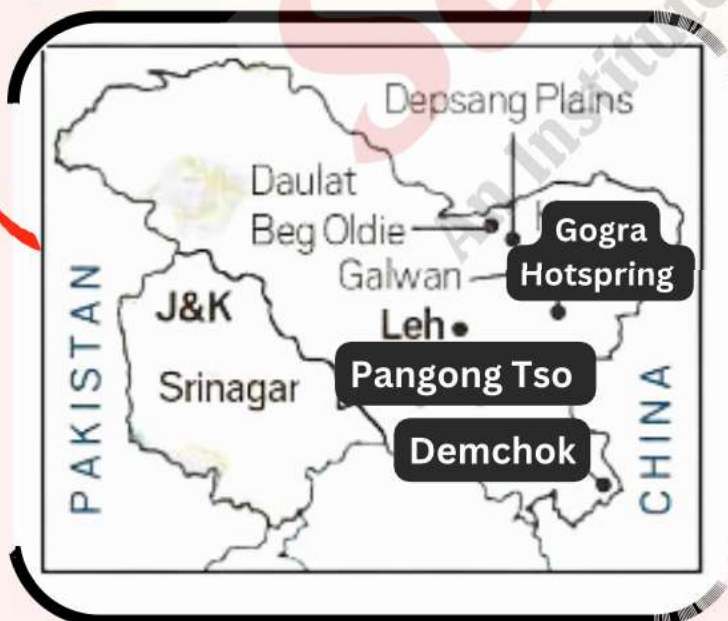
- (a) 2-1-3
- (b) 3-2-1
- (c) 1-2-3
- (d) 3-1-2

### PYQ 2020

Siachen Glacier is situated to the

- (a) East of Aksai Chin
- (b) East of Leh
- (c) North of Gilgit
- (d) North of Nubra Valley

### Explanation



Therefore, option (a) is the correct answer.



# Centre clears oil & gas exploratory drilling in Hollongapar Gibbon Sanctuary

**DownToEarth**

*Oil exploration within the eco-sensitive zone raises alarms over the balance between energy development and biodiversity conservation*

## Expected Question

PYQ 2012

Q. Hollongapar Gibbon Sanctuary was in the news due to oil and gas exploration drilling in the eco-sensitive zone (ESZ). The sanctuary is located in:

- (a) Gujarat
- (b) Rajasthan
- (c) Assam
- (d) Maharashtra

In which one among the following categories of protected areas in India are local people **not** allowed to collect and use the biomass?

- (a) Biosphere Reserves
- (b) National Parks
- (c) Wetlands declared under Ramsar Convention
- (d) Wildlife Sanctuaries

## Explanation

The Forest Advisory Committee has granted in-principle approval to Vedanta's Cairn Oil and Gas for oil exploration on 4.49 hectares in the eco-sensitive zone of Assam's Hollongapar Gibbon Sanctuary, home to the endangered Hoolock Gibbon – **India's only ape species**.

Therefore, option (c) is the correct answer.



- Exploratory mining site for hydrocarbon
- Eco-sensitive Zone
- Hollongapar Gibbon Wildlife Sanctuary

Map not to scale; Source: Wildlife Institute of India and Central Jorhat District Citizens' Forum



Hollongapar Gibbon Wildlife Sanctuary



# When is Hindi Diwas? Know the date, history, significance, and celebrations

Hindi Diwas, observed on September 14, marks the anniversary of Hindi's recognition as an official language in 1949, honoring its contribution to national unity and identity through various literary and cultural events.

## Expected Question

**Consider the following statements:**

1. The Constitution of India does not give any language the status of national language.
2. Hindi in Devanagari script is the official language of the central government and the Union as per Article 343.
3. The first Hindi Diwas was celebrated pre-independence when in 1918, a group of Hindi scholars and activists formed the Hindi Sahitya Sammelan (Hindi Literary Conference) to promote the use of Hindi as a national language.

**Which of the statements given above are correct?**

- (a) 1 and 2 only
- (b) 2 and 3 only
- (c) 2 only
- (d) 1, 2 and 3

## Explanation

Hindi was adopted as an official language by the Constituent Assembly on September 14, 1949, to promote unity across India's diverse linguistic regions. Hindi Diwas is observed annually to commemorate this decision, with the first celebration held in 1953.

As per Article 343, Hindi in Devanagari script is the official language of the Union government. However, the Constitution does not recognize any national language.

Therefore, option (a) is the correct answer.





# The story of the Great Stupa of Sanchi from Ashokan times to now

The ornate red sandstone gateway, which was unveiled in December 2022, is a 1:1 reproduction of the original structure standing at almost 10 metres high and 6 metres wide, and weighing roughly 150 tonnes.

## Expected Question

**With reference to The Great Stupa of Sanchi, consider the following statements:**

1. It was commissioned in the third century BCE by Emperor Ashoka.
2. It is the largest and oldest structure in a complex of Buddhist monuments comprising numerous other stupas, temples, and monasteries at Sanchi.

**Which of the above statements are correct?**

- (a) 1 only
- (b) 2 only
- (c) Both 1 and 2
- (d) Neither 1 nor 2

## PYQ 2023

With reference to ancient India, consider the following statements :

1. The concept of Stupa is Buddhist in origin.
2. Stupa was generally a repository of relics.
3. Stupa was a votive and commemorative structure in Buddhist tradition.

How many of the statements given above are correct?

- (a) Only one
- (b) Only two
- (c) All three
- (d) None

## Explanation

### The Great Stupa of Sanchi

- A stupa is a Buddhist monument, typically hemispherical, built to house sacred relics of the Buddha or revered monks.
- Its form is inspired by pre-Buddhist burial mounds in India.
- The Great Stupa at Sanchi, commissioned by Emperor Ashoka in the 3rd century BCE, is the oldest and largest monument in a complex of Buddhist structures.
- The Sanchi site includes stupas, temples, and monasteries, with additions continuing up to the 12th century CE.

Hence, both statements 1 and 2 are correct.





**September 12 marks the 127th anniversary of the Battle of Saragarhi, regarded today as one of the finest last stands in global military history.**

## **Why September 12 is observed as Saragarhi Day**

**The Indian EXPRESS**  
JOURNALISM OF COURAGE

The Battle of Saragarhi is considered one of the finest last stands in the military history of the world. On this day 21 soldiers held down the fort against 8,000 Orakzai and Afridi tribal militants. We explain

### **Expected Question**

**With reference to the Battle of Saragarhi, consider the following statements:**

1. It was a revolt against the East India Company over oppression by revenue officials, zamindars, and corrupt moneylenders.
2. The seeds of the protracted rebellion were sown in 1832 when the East India Company created the Damin-i-koh region in the forested belt of Rajmahal hills.

**Which of the statements given above are correct?**

- (a) 1 only
- (b) 2 only
- (c) Both 1 and 2
- (d) Neither 1 nor 2

### **PYQ 2022**

With reference to Indian history, consider the following statements :

1. The Dutch established their factories/warehouses on the east coast on lands granted to them by Gajapati rulers.
2. Alfonso de Albuquerque captured Goa from the Bijapur Sultanate.
3. The English East India Company established a factory at Madras on a plot of land leased from a representative of the Vijayanagara empire.

Which of the statements given above are correct ?

- (a) 1 and 2 only
- (b) 2 and 3 only
- (c) 1 and 3 only
- (d) 1, 2 and 3

### **Explanation**

- On September 12, 1897, 21 soldiers of the 36th Sikh Regiment (now 4 Sikh) led by Havildar Ishar Singh, held their post against over 8,000 Afridi and Orakzai tribesmen for seven hours, killing 200 and injuring 600 enemies. Statement 1 is not correct (they were not supported by a larger unit or equal force)
  - Saragarhi served as a communication post between Fort Lockhart and Fort Gulistan in the North West Frontier Province (NWFP) (now in Pakistan)
  - It was usually manned by 40 men but had only 21 soldiers and 1 civilian (Daad) on that day. Statement 2 is also not correct.
- Therefore, option (d) is the correct answer.



# Does Polaris Dawn mission violate 50-year old international treaty?

**The Indian EXPRESS**  
JOURNALISM OF COURAGE

The Outer Space Treaty was signed in 1967, during the peak of the Cold War. Over half a century later, it is still technically in force. And SpaceX's Polaris Dawn mission may violate it

## Expected Question

**With reference to the Outer Space Treaty, consider the following statements:**

1. It entered into force during the peak of World War II and provides the basic framework on international space law that remains in place to date.
2. As per one of the Articles of the treaty the activities of non-governmental entities in outer space shall require authorisation and continuing supervision by the appropriate State Party to the Treaty.

**Which of the statements given above is/are correct?**

- (a) 1 only
- (b) 2 only
- (c) Both 1 and 2
- (d) Neither 1 nor 2

## Explanation

### Outer Space Treaty (OST) , 1967

- The OST entered into force in October 1967, during the Cold War, and laid the foundation of international space law.
- Statement 1 is not correct – it continues to be in force, but the statement may not reflect the nuance of its applicability or evolution.
- Article VI of the OST addresses the role of non-governmental entities in space.
- While the USSR wanted to restrict space activities to nation-states, the US advocated private participation.
- A compromise was reached: Activities by private players require authorization and continuous supervision by their respective governments.

Therefore b is the correct answer.





# What is 'God of chaos' asteroid and why Apophis's trajectory has experts worried?

Despite reassurances that a collision is highly unlikely, Apophis remains one of the largest asteroids to pass so close to Earth in recent history.

## Expected Question

**'God of Chaos', recently seen in news, is related to the field of:**

- (a) Astronomy
- (b) Neuroscience
- (c) Monetary Policy
- (d) Artificial Intelligence

## Explanation

A massive asteroid, known as 99942 Apophis or the 'God of Chaos', has had its trajectory reevaluated, sparking concerns it may be on a collision course with Earth. Initially discovered in 2004, Apophis was previously thought to have a 2.7% chance of impacting our planet in 2029.



## PYQ 2017

The terms 'Event Horizon', 'Singularity', 'String Theory' and 'Standard Model' are sometimes seen in the news in the context of

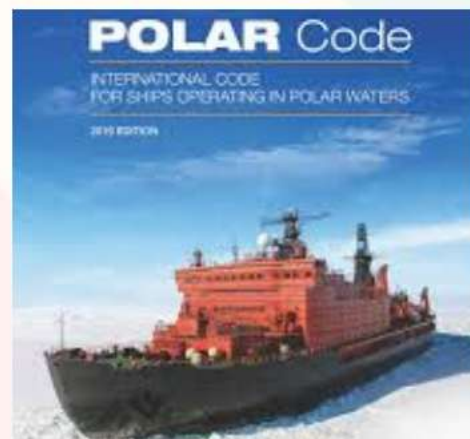
- (a) Observation and understanding of the Universe
- (b) Study of the solar and the lunar eclipses
- (c) Placing satellites in the orbit of the Earth
- (d) Origin and evolution of living organisms on the Earth

Term based PYQ

## PYQ 2022

Which one of the following statements best describes the 'Polar Code'?

- (a) It is the international code of safety for ships operating in polar waters.
- (b) It is the agreement of the countries around the North Pole regarding the demarcation of their territories in the polar region.
- (c) It is a set of norms to be followed by the countries whose scientists undertake research studies in the North Pole and South Pole.
- (d) It is a trade and security agreement of the member countries of the Arctic Council.





# What is helium and why is it used in rockets?

Past missions that have been affected by pesky helium leaks include ISRO's Chandrayaan 2 and ESA's Ariane 5.

## Expected Question

With reference to Helium gas, consider the following statements:

1. It is inert and the lightest element in the periodic table.
2. Many space missions have been affected by its pesky leaks including ISRO's.
3. It is prone to leaks because of its small atomic size and low molecular weight.
4. Its very high boiling point is one of the reasons for its use in rockets.

How many of the statements given above are not correct?

- (a) Only one
- (b) Only two
- (c) Only three
- (d) All of the above

## PYQ 2019

In the context of which one of the following are the terms 'pyrolysis and plasma gasification' mentioned?

- (a) Extraction of rare earth elements
- (b) Natural gas extraction technologies
- (c) Hydrogen fuel-based automobiles
- (d) Waste-to-energy technologies



## Explanation

### Helium and Space Missions

- **Statement 1 Not correct:** While helium is inert (non-reactive), this alone does not justify its usage in fuel systems as stated.
- **Statement 2 Correct:** Several missions have faced helium-related issues:
  1. NASA's Starliner astronauts extended stay due to helium leaks in propulsion system.
  2. SpaceX's Polaris Dawn was delayed due to helium issues.
  3. Past missions like ISRO's Chandrayaan-2 and ESA's Ariane 5 also faced problems due to helium leaks.
- **Statement 3 Correct:** Helium's small atomic size helps it easily leak, which ironically makes it useful for detecting faults in spacecraft fuel systems.
- **Statement 4 Not correct:** Helium has a very low boiling point ( $-268.9^{\circ}\text{C}$ ), but this makes it suitable as a pressur

Therefore, option (b) is the correct answer.





# India formally joins international alliance for big cats' conservation

## Expected Question

Consider the following statements:

1. India has formally joined the International Big Cat Alliance which it launched in 2023.
2. Among the seven big cats, four are found in India.

Which of the statements given above is/are correct?

- (a) 1 only
- (b) 2 only
- (c) Both 1 and 2
- (d) Neither 1 nor 2

## PYQ 2024

Consider the following statements :

1. Lions do not have a particular breeding season.
2. Unlike most other big cats, cheetahs do not roar.
3. Unlike male lions, male leopards do not proclaim their territory by scent marking.

Which of the statements given above are correct ?

- (a) 1 and 2 only
- (b) 2 and 3 only
- (c) 1 and 3 only
- (d) 1, 2 and 3

## Explanation

- India has formally joined the International Big Cat Alliance (IBCA), which it launched in 2023. After approval from the Union Cabinet, India signed and ratified the framework. Hence, statement 1 is correct.
- Four nations, including India, Nicaragua, Eswatini and Somalia, have become the IBCA members now. In April 2023, PM Narendra Modi launched the IBCA to secure the future of big cats and their landscapes.
- Among the seven big cats, five – tiger, lion, leopard, snow leopard and cheetah – are found in India, excluding puma and jaguar. Hence, statement 2 is not correct.

Therefore, option (a) is the correct answer.

**INTERNATIONAL BIG CAT ALLIANCE**

The International Big Cat Alliance is a multi-country, multi-agency coalition aimed at conserving big cat species and their habitats.

**Launched by** India (2023) | **Headquarters** India

**Member states** 96 countries | **Structure** Consists of Assembly of Members, Standing Committee & Secretariat

**FUNCTIONS**

- Secure the future of big cats (Tigers, Lions, Leopards, Snow Leopards, Pumas, Jaguars, and Cheetahs)
- Mitigate the adverse effects of climate change
- Advocate for policy initiatives
- Attain the United Nations-mandated Sustainable Development Goals

**THREATS TO BIG CATS**

- Poaching
- Habitat loss & fragmentation
- Human-Leopard conflict
- Climate change & Deforestation

**Conservation Status of Big Cats**

Species	Scientific Name	IUCN Red List	CITES	Indian Wildlife (Protection) Act, 1972
Tigers	<i>Panthera tigris</i>	Endangered	Appendix-I	Schedule-I
Lions	<i>Panthera leo</i>	Vulnerable	Appendix-I	Schedule-I
Leopards	<i>Panthera pardus</i>	Vulnerable	Appendix-I	Schedule-I
Snow Leopards	<i>Panthera uncia</i>	Vulnerable	Appendix-I	Schedule-I
Pumas	<i>Puma concolor</i>	Least Concerned	Appendix II (P. c. Costaricensis and cougar: Appendix-I)	NA
Jaguars	<i>Panthera onca</i>	Near Threatened	Appendix-I	NA
Cheetahs	<i>Acinonyx jubatus</i>	Vulnerable	Appendix-I	Schedule-I



# Periyar's 146th birth anniversary: The significance of the iconoclast social reformer

**The Indian EXPRESS**  
JOURNALISM OF COURAGE

Born in 1879, Periyar is remembered for the Self Respect Movement to redeem the identity and self-respect of Tamils. He envisaged a Dravida homeland of Dravida Nadu, and launched a political party, Dravidar Kazhagam (DK)

## Expected Question

He is remembered for the Self Respect Movement to redeem the identity and self-respect of Tamils. He envisaged a Dravida homeland of Dravida Nadu, and launched a political party, Dravidar Kazhagam (DK). He quarrelled with Gandhi over the question of separate dining for Brahmin and non-Brahmin students at Gurukkulam. After failing to bend the Congress to his view, he resigned from the party in 1925, and associated himself with the Justice Party and the Self Respect Movement, which opposed the dominance of Brahmins in social life, especially the bureaucracy.

The above mentioned lines refer to:

- (a) Ayyankali
- (b) Chattampi Swamikal
- (c) Periyar EV Ramasamy
- (d) V V S Iyer

## PYQ 2019

6. Consider the following pairs :

Movement/ Organization	Leader
1. All India Anti-Untouchability League	: Mahatma Gandhi
2. All India Kisan Sabha	: Swami Sahajanand Saraswati
3. Self-Respect Movement	: E. V. Ramaswami Naicker

Which of the pairs given above is/are correctly matched?

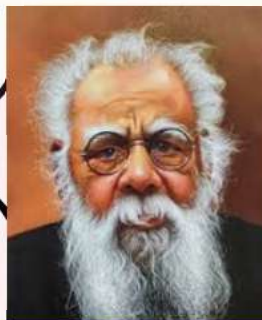
- (a) 1 only
- (b) 1 and 2 only
- (c) 2 and 3 only
- (d) 1, 2 and 3

## Explanation

He envisioned a Dravidian nation (Dravida Nadu) and founded the Dravidar Kazhagam (DK) political party.

Joined the Justice Party and the Self-Respect Movement, which opposed Brahmin domination in social life and bureaucracy.

Born in 1879, Periyar is best known for the Self-Respect Movement, which aimed to restore Tamil identity and self-respect.



Periyar EV Ramasamy

Gained national recognition during the Vaikom Satyagraha (1924), demanding lower-caste access to public roads near the Vaikom temple.

Therefore, option (c) is the correct answer.



# India to launch its first mission to Venus in 2028: Everything you need to know

Venus is often called Earth's twin because it is similar in mass, density, and size. Therefore, studying Venus may offer scientists clues about the evolution of Earth.

## Expected Question

**With reference to space missions to Venus consider the following statements:**

1. DaVinci, Veritas and EnVision are the missions planned by the US to Venus.
2. Studying Venus through space missions may offer scientists clues about the evolution of Earth.

**Which of the above statements are true?**

- (a) 1 only
- (b) 2 only
- (c) Both 1 and 2
- (d) Neither 1 nor 2

## PYQ 2014

**68. Which of the following pairs is/are correctly matched?**

Spacecraft	Purpose
1. Cassini-Huygens	: Orbiting the Venus and transmitting data to the Earth
2. Messenger	: Mapping and investigating the Mercury
3. Voyager 1 and 2	: Exploring the outer solar system

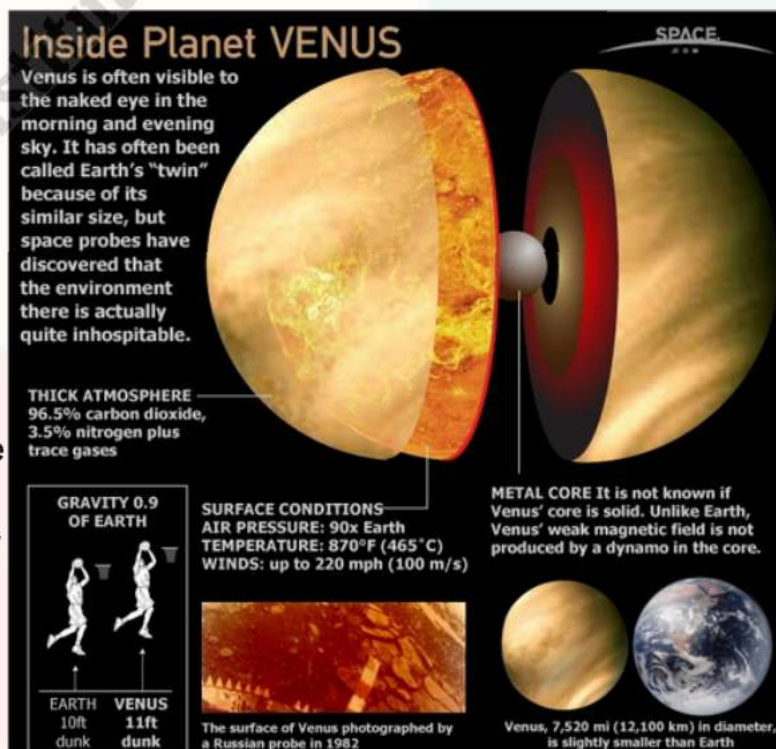
Select the correct answer using the code given below.

- (a) 1 only
- (b) 2 and 3 only
- (c) 1 and 3 only
- (d) 1, 2 and 3

## Explanation

- Venus is often called Earth's twin because it is similar in mass, density, and size. Therefore, studying Venus may offer scientists clues about the evolution of Earth. Notably, Venus is thought to have had water at some point in its history but has now become a dry and dusty planet. Hence, statement 2 is correct.
- The US has planned at least two more missions to Venus in the future – DaVinci in 2029 and Veritas in 2031 – and the ESA has planned the EnVision mission for 2030. Hence, statement 1 is not correct.

Therefore, (b) is the correct answer.





# A new White Revolution in dairy sector: Where India stands, where it aims to be

India is the world's top milk producer, with production having reached 230.58 million tonnes during 2022-23. The idea of White Revolution 2.0 revolves around cooperative societies, which were also the bedrock of Operation Flood five decades ago.

## Expected Question

With reference to the White Revolution 2.0, consider the following statements:

1. The idea of White Revolution 2.0 revolves around cooperative societies.
2. Financial assistance will be provided to set up National-level milk procurement systems.
3. Under the scheme, there will be no training and capacity-building facilities.

Which of the statements given above is/are correct?

- (a) 1 and 2 only  
(b) 1 only  
(c) 2 and 3 only  
(d) 1, 2 and 3

## PYQ 2024

With reference to the sectors of the Indian economy, consider the following pairs :

	Economic activity	Sector
1.	Storage of agricultural produce	Secondary
2.	Dairy farm	Primary
3.	Mineral exploration	Tertiary
4.	Weaving cloth	Secondary

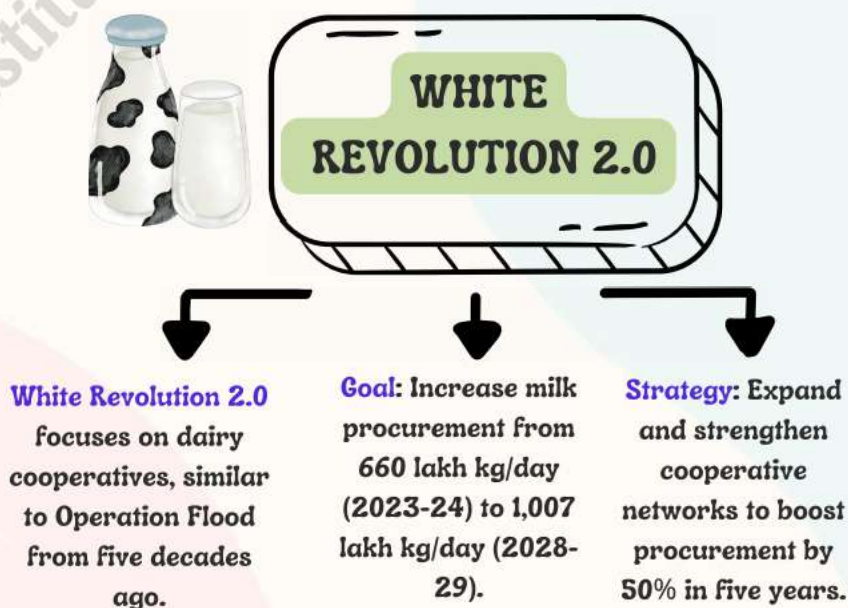
How many of the pairs given above are correctly matched ?

- (a) Only one  
(b) Only two  
(c) Only three  
(d) All four

## Explanation

- The concept of White Revolution 2.0 centres on cooperative societies, which were also the foundation of Operation Flood five decades ago. Hence, statement 1 is correct.
- Under the scheme, financial assistance will be provided to set up village-level milk procurement systems, chilling facilities, and training and capacity-building. Hence, statements 2 and 3 are not correct.

Therefore, option (b) is the correct answer.





# This Indian state has secured top position in FSSAI's State Food Safety Index 2024 for second time in a row

## Expected Question

With reference to State Food Safety Index (SFSI) 2024, consider the following statements:

1. It is released by the Food Safety and Standards Authority of India.
2. Kerala has emerged as a leader in food safety.

Which of the following statements are correct?

- (a) 1 only
- (b) 2 only
- (c) Both 1 and 2
- (d) Neither 1 nor 2

## PYQ 2018

23. Consider the following statements :

1. The Food Safety and Standards Act, 2006 replaced the Prevention of Food Adulteration Act, 1954.
2. The Food Safety and Standards Authority of India (FSSAI) is under the charge of Director General of Health Services in the Union Ministry of Health and Family Welfare.

Which of the statements given above is/are correct ?

- (a) 1 only
- (b) 2 only
- (c) Both 1 and 2
- (d) Neither 1 nor 2

## Explanation

- State Food Safety Index (SFSI) 2024 – Kerala's Performance
- Kerala secured the top position in the SFSI 2024 for the second consecutive year. Hence, statement 2 is correct.
- The SFSI is released annually by the Food Safety and Standards Authority of India (FSSAI) to assess food safety performance across states and UTs. Hence, statement 1 is correct.

Therefore, option (c) is the correct answer.

## 'RANKING WILL IMPROVE IN FOOD INDEX 2024-25'

• Telangana ranked 23 out of all states (28) & Union Territories (8) in Food Safety and Standards Authority of India index for 2023-24

• Andhra Pradesh performs even worse, securing rank 28

35.75 points awarded to state out of 100, as per FSSAI index

• Zero out of 10 recorded by state in improvement in state food safety index (SFSI) category

• State food safety officials express confidence that state's ranking would improve significantly in food index 2024-25

• Govt actively overseeing food quality throughout state, say senior state food safety officials

1,000 inspections carried out since Jan at various establishments, including canteens, hotels, restaurants, 500 hostels, and 84 hospitals



### TOP STATES IN FOOD SAFETY INDEX

State	Points
Kerala	73.75
Tamil Nadu	67
J&K	64.25
Gujarat	61.75
Punjab	56.75

Food safety ranking for April 1, 2023, to March 31, 2024



## Judge's 'majority's say' remark: What law says about high court judges' removal

A judge will not be removed from his office except by the President's order after an address by both Houses of Parliament supported by a majority of the total membership of the Houses.

### Expected Question

Consider the following statements with respect to the removal of the judges of the Supreme Court.

1. A judge of the Supreme Court can be removed from his office only by an order of the President.
2. Proven misbehaviour or incapacity are the only two grounds for the removal of a judge of the constitutional court.
3. The details of the process of impeachment of the Judges of the Supreme Court of India are given in the Judges (Inquiry) Act, 1968.
4. Impeachment proceedings against the Supreme Court Judges have been triggered only five times in history.

How many of the above statements are correct?

- (a) Only one
- (b) Only two
- (c) Only three
- (d) All four

### PYQ 2021

88. With reference to Indian judiciary, consider the following statements :

1. Any retired judge of the Supreme Court of India can be called back to sit and act as a Supreme Court judge by the Chief Justice of India with prior permission of the President of India.
2. A High Court in India has the power to review its own judgement as the Supreme Court does.

Which of the statements given above is/are correct?

- (a) 1 only
- (b) 2 only
- (c) Both 1 and 2
- (d) Neither 1 nor 2

### Explanation

#### Removal of Judges in India – Constitutional Provisions

- The Constitution outlines the process for removing judges of the High Court or Supreme Court. A judge can be removed:
  1. Only by the President's order
  2. After an address by each House of Parliament
  3. Supported by a special majority
  4. In the same session
  5. On grounds of proved misbehaviour or incapacity (only two grounds mentioned in the Constitution)

Hence, statements 1 and 2 are correct

- In 1964, Parliament introduced a bill to define procedures for judicial removal.
- The bill lapsed with the dissolution of the Third Lok Sabha
- A similar version was passed in 1968 by the Fourth Lok Sabha, aligning with committee recommendations

Hence, statement 3 is correct



# Expert Explains: Why smog towers, cloud seeding won't save us from air pollution

Quick fixes such as smog towers and cloud seeding do not deliver meaningful results. The fight for clean air is not just a technical challenge; it is a deeply political one. Here's what must be done

## Expected Question

Which of the following statements correctly describes "temperature inversion"?

- (a) It is a long, narrow regions in the atmosphere that transports most of the water vapor outside of the tropics.
- (b) It is a trapping of cooler air on the ground by a layer of warm air.
- (c) It is a collusion between warm and cold air masses leading to the disruption in temperature.
- (d) It is a stretch of warm air masses that subside over the landmass leading to a decrease in temperature.

## PYQ 2012

Normally, the temperature decreases with the increase in height from the Earth's surface, because

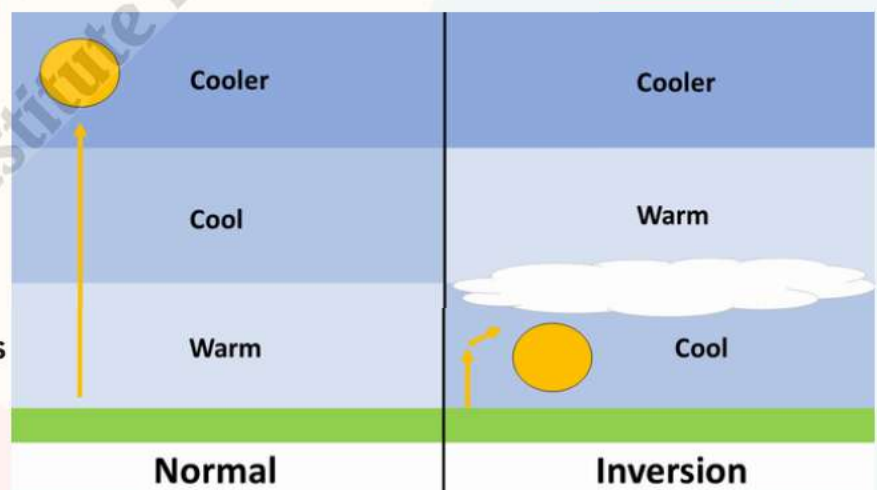
- 1. the atmosphere can be heated upwards only from the Earth's surface
- 2. there is more moisture in the upper atmosphere
- 3. the air is less dense in the upper atmosphere

Select the correct answer using the codes given below:

- (a) 1 only
- (b) 2 and 3 only
- (c) 1 and 3 only
- (d) 1, 2 and 3

## Explanation

As the southwest monsoon season ends in September, India faces the situation of air pollution in most parts of the country. The post-monsoon months bring stagnant air and a weather pattern called temperature inversion – which occurs when a layer of warm air traps cooler air near the ground. Therefore, option (b) is the correct answer.





# Electronics to solar equipment to steel, India grapples with China Shock 2.0

The China shock not only disrupted Western markets but also adversely impacted Indian manufacturing and trade.

## Expected Question

PYQ 2023

**Consider the following statements:**

1. India's imports from China have reduced from \$101 billion in FY19 to \$70 billion in FY24.
2. In 2024, India has imposed over 30 anti-dumping investigations against China, the most against any country.

**Which of the following statements is/are correct?**

- (a) 1 only
- (b) 2 only
- (c) Both 1 and 2
- (d) Neither 1 nor 2

4. Consider the following statements :

1. India has more arable area than China.
2. The proportion of irrigated area is more in India as compared to China.
3. The average productivity per hectare in Indian agriculture is higher than that in China.

How many of the above statements are correct?

- (a) Only one
- (b) Only two
- (c) All three
- (d) None

## Explanation

### India-China Trade Dynamics (FY24)

- As per Global Trade Research Initiative (GTRI):
  - India-China bilateral trade in FY24 was \$118.4 billion
    - Imports: \$101.7 billion (↑ 3.24%)
    - Exports: \$16.67 billion (↑ 8.7%)
    - Hence, Statement 1 is not correct
- In 2024, India initiated 30+ anti-dumping investigations against China — the highest against any nation.
  - Targeted products include:
    - Plastic processing machines
    - Vacuum-insulated flasks
    - Welded stainless steel pipes/tubes
    - Soft ferrite cores
    - Industrial laser machines
    - Hence, Statement 2 is correct

Correct answer: Option (b)





# Why dengue cases have surged this year in across the world

The 12.06 million cases reported globally in 2024 are more than twice the number recorded all of last year

## Expected Question

**Dengvaxia and QDenga are**

- (a) New variant of dragonfly found in Kerala
- (b) High-performing supercomputer developed by China
- (c) Vaccination related to diseases caused by *Aedes aegypti* mosquitoes
- (d) Recently discovered critical minerals found in Chenab valley

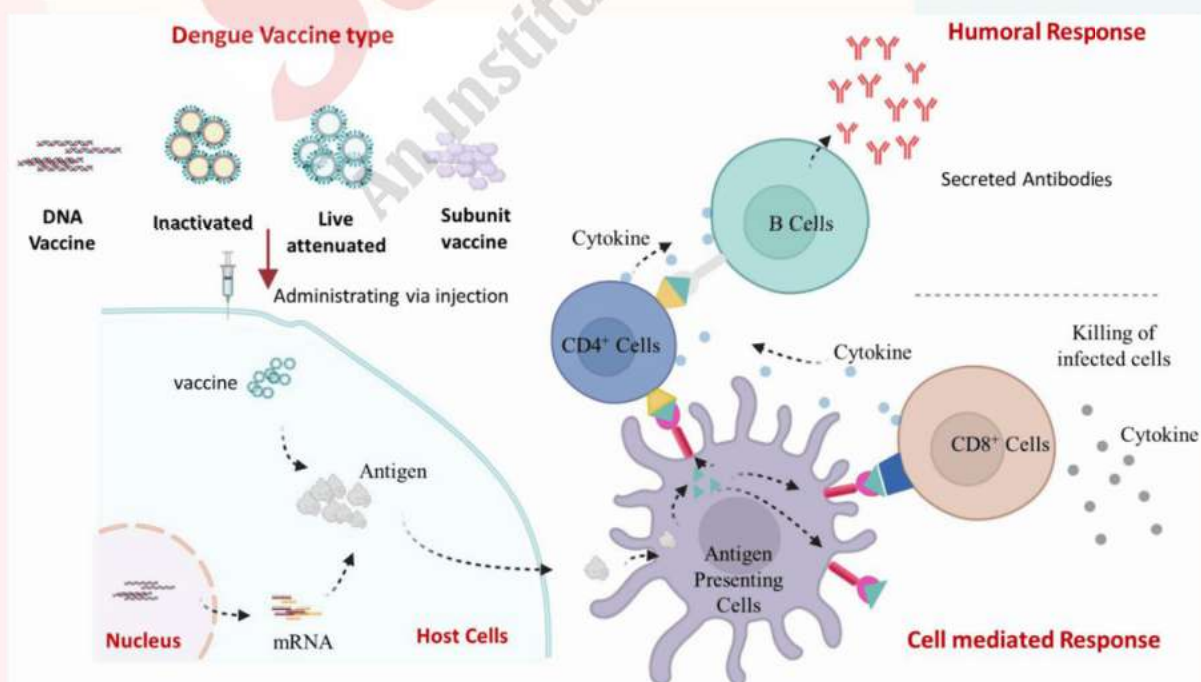
## PYQ 2021

The term 'ACE2' is talked about in the context of

- (a) genes introduced in the genetically modified plants
- (b) development of India's own satellite navigation system
- (c) radio collars for wildlife tracking
- (d) spread of viral diseases

## Explanation

**Dengue** is a viral infection which is transmitted by the *Aedes aegypti* mosquito. The WHO has recommended two vaccines against Dengue: Sanofi's Dengvaxia and Takeda's QDenga. However, these have not received approval in India. Therefore, option (c) is the correct answer.







## Expected Question

Consider the following statements:

**Statement-I:** The Press Note 3 (PN3) FDI regulation is enforced through the Foreign Exchange Management Act (FEMA).

**Statement-II:** The PN3 smoothened the process of capital investments from the QUAD countries.

Which of the following is correct in respect of the above statements?

- (a) Both Statement-I and Statement-II are correct and Statement-II explains statement-I
- (b) Both Statement-I and Statement-II are correct, but Statement-II does not explain statement-I
- (c) Statement-I is correct, but Statement-II is incorrect
- (d) Statement-I is incorrect, but Statement-II is correct

## PYQ 2011

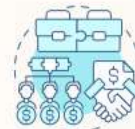
Both Foreign Direct Investment (FDI) and Foreign Institutional Investor (FII) are related to investment in a country. Which one of the following statements best represents an important difference between the two ?

- (a) FII helps bring better management skills and technology, while FDI only brings in capital
- (b) FII helps in increasing capital availability in general, while FDI only targets specific sectors
- (c) FDI flows only into the secondary market, while FII targets primary market
- (d) FII is considered to be more stable than FDI

## Explanation

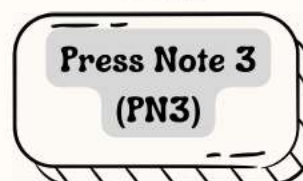
- PN3 is enforced through the Foreign Exchange Management Act (FEMA)
- Objective: PN3 mandates prior government approval for FDI from countries sharing land borders with India.
- Purpose: To prevent opportunistic takeovers of Indian companies, especially during vulnerable periods like the COVID-19 pandemic.

**Introduced** in April 2020 to regulate Foreign Direct Investment (FDI) from land-bordering countries.



**Objective:** Prevent opportunistic takeovers amid pandemic-driven economic vulnerabilities.

**Target:** Primarily aimed at Chinese FDI due to national security concerns.



**Purpose:** Safeguard critical sectors from external influence that may threaten national security.



**Requirement:** Prior government approval for investments from these countries.



Therefore, option (c) is the correct answer.





# India, US sign key defence supply pact as Rajnath begins 4-day visit

## Expected Question

With reference to the Security of Supply Arrangement (SOSA), consider the following statements:

1. It is signed between India and Ukraine.
2. It is a binding agreement.
3. The arrangement will enable both countries to acquire the industrial resources to meet national security needs.

Which of the statements given above is/are correct?

- (a) 2 only
- (b) 1 and 3 only
- (c) 3 only
- (d) 1, 2 and 3

## PYQ 2017

Consider the following statements :

1. India has ratified the Trade Facilitation Agreement (TFA) of WTO.
2. TFA is a part of WTO's Bali Ministerial Package of 2013.
3. TFA came into force in January 2016.

Which of the statements given above is/are correct ?

- (a) 1 and 2 only
- (b) 1 and 3 only
- (c) 2 and 3 only
- (d) 1, 2 and 3

## Explanation

**National Security Needs:** Allows India and the U.S. to request priority delivery of certain defense items.

**Security of Supply Arrangement (SOSA):** Ensures mutual and timely provision of defense-related goods and services during peacetime, emergencies, and conflicts.

India is the **18th SOSA** partner of the US after Australia, Canada, Denmark, Estonia, Finland, Israel, Italy, Japan, Latvia, Lithuania, the Netherlands, Norway, Republic of Korea, Singapore, Spain, Sweden, and the UK.



**Security of Supply Arrangement (SOSA)**

**Non-Binding Nature:** SOSA is legally non-binding, but both nations are negotiating a binding Reciprocal Defence Procurement (RDP) Agreement.

**MOU on Liaison Officers:** Enhances information sharing between India and the U.S. by posting Indian armed forces officers in key U.S. strategic commands.

Therefore, option (c) is the correct answer.



## INS Arighaat, India's second nuclear ballistic missile submarine, commissioned into service

The sub has the same dimensions and reactor as its predecessor, INS Arihant, but adds indigenously developed technological upgrades; it will strengthen India's nuclear triad, enhance deterrence, says Defence Minister

### Expected Question

### PYQ 2016

With reference to INS Arighaat consider the following statements:

1. It is the second nuclear-powered submarine of the Arihant class.
2. It will be a key component of India's nuclear triad.

Which of the statements given above are correct?

- (a) Only 1
- (b) Only 2
- (c) Both 1 and 2
- (d) Neither 1 nor 2

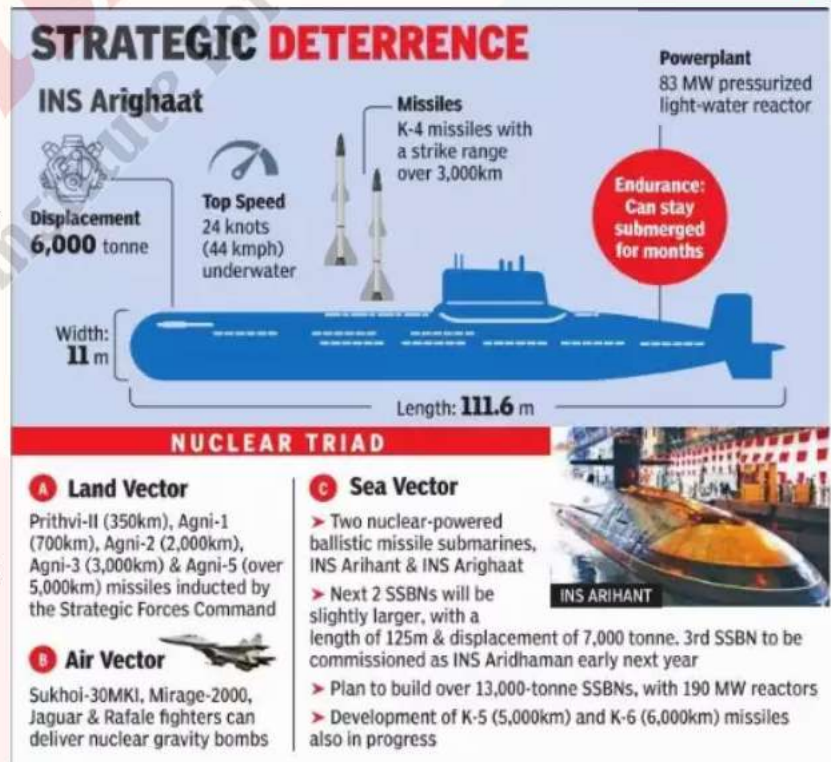
Which one of the following is the best description of 'INS Astradharini', that was in the news recently?

- (a) Amphibious warfare ship
- (b) Nuclear-powered submarine
- (c) Torpedo launch and recovery vessel
- (d) Nuclear-powered aircraft carrier

### Explanation

Induction of INS Arighaat, the second nuclear-powered submarine of the Arihant class, significantly boosts India's nuclear deterrence capabilities. It strengthens the nuclear triad, the ability to launch missiles from land, air, and maritime platforms. Hence, statement 1 and 2 are correct.

Therefore, option (c) is the correct answer





## Bihar, Andhra Pradesh's demand for special category status | Explained

### Expected Question

Which of the following statements is NOT correct regarding Special Category Status (SCS)?

- (a) It was introduced based on the recommendations of the Fifth Finance Commission.
- (b) It guarantees additional financial assistance to states in the form of grants.
- (c) In 1969, Jammu & Kashmir (J&K), Sikkim and Tripura were granted SCS.
- (d) The decision to grant SCS lies with the National Development Council (NDC).

### Explanation

**Definition:** SCS is a classification granted by the Central Government to assist states facing geographical and socio-economic disadvantages.

**Introduction:** First introduced in 1969 based on the recommendations of the Fifth Finance Commission (FC).

**Initial Beneficiaries (1969):** Jammu & Kashmir, Assam, and Nagaland were the first states to receive SCS.

**Later Additions:** Sikkim, Tripura, and other states were later granted SCS.

**Financial Assistance:** SCS states used to receive grants based on the Gadgil-Mukherjee formula.

Therefore, option (c) is the correct answer. Therefore, option (c) is the correct answer.



# Centre announces Unified Pension Scheme: How will UPS differ from OPS, NPS?

Former Finance Secretary T V Somanathan, who led the committee which came up with the UPS, said that the latest pension scheme incorporates the best elements of both the NPS and the OPS. Here is how it will work

## Expected Question

**With reference to the Unified Pension Scheme (UPS) consider the following statements:**

1. There is an assured pension that would amount to 50% of the employee's average basic pay drawn over the last 12 months before superannuation for a minimum qualifying service of 25 years.
2. Upon a retiree's death, their immediate family would be eligible for 100 per cent of the pension last drawn by the retiree.
3. In the case of superannuation after a minimum of 10 years of service, the UPS provides an assured minimum pension of Rs 50,000 per month.

**Which of the statements given above is/are correct?**

- (a) 1 and 2 only
- (b) 3 only
- (c) 1 only
- (d) 2 and 3 only

## PYQ 2016

Regarding 'Atal Pension Yojana', which of the following statements is/are correct?

1. It is a minimum guaranteed pension scheme mainly targeted at unorganized sector workers.
2. Only one member of a family can join the scheme.
3. Same amount of pension is guaranteed for the spouse for life after subscriber's death.

Select the correct answer using the code given below.

- (a) 1 only
- (b) 2 and 3 only
- (c) 1 and 3 only
- (d) 1, 2 and 3

## PYQ 2017

Which of the following is a most likely consequence of implementing the 'Unified Payments Interface (UPI)'?

- (a) Mobile wallets will not be necessary for online payments.
- (b) Digital currency will totally replace the physical currency in about two decades.
- (c) FDI inflows will drastically increase.
- (d) Direct transfer of subsidies to poor people will become very effective.

## Explanation

### Key Features of the Universal Pension Scheme (UPS)

- Assured Pension: 50% of the average basic pay (last 12 months) for those with 25 years of service; proportionately reduced for service between 10–25 years.
- Minimum Pension: Assured Rs 10,000/month after superannuation with at least 10 years of service. (Statement 3 is not correct)
- Family Pension: 60% of the last drawn pension for immediate family after the retiree's death. (Statement 2 is not correct)
- Inflation Indexation: Dearness relief linked to the CPI-IW index.
- Lump Sum Benefit: Additional payment at superannuation – 1/10th of monthly emoluments for every 6 months of completed service.

**Therefore, option (c) is the correct answer**



## Concerned at deteriorating situation along the Israel-Lebanon Blue Line: India

The 120-km Blue Line is a United Nations-recognised demarcation line to indicate that Israel had withdrawn its military from southern Lebanon. It separates Lebanon from Israel and the Golan Heights, but it is not an official international border.

Updated - October 11, 2024 06:39 pm IST - New Delhi

### Expected Question

**Blue Line is sometimes seen in the news. It is related to—**

- (a) Border demarcation between Israel and Lebanon
- (b) A maritime boundary dispute in the South China Sea
- (c) A railway project connecting Europe and Asia
- (d) The UN peacekeeping mission in Africa

### PYQ 2023

93. Consider the following pairs :

<i>Regions often mentioned in news</i>	<i>Reason for being in news</i>
1. North Kivu and Ituri	: War between Armenia and Azerbaijan
2. Nagorno-Karabakh	: Insurgency in Mozambique
3. Kherson and Zaporizhzhia	: Dispute between Israel and Lebanon

How many of the above pairs are correctly matched?

- (a) Only one
- (b) Only two
- (c) All three
- (d) None

### Explanation



Therefore, option (a) is the correct answer



# Vibrant blue button jellyfish with stinging tentacles wash up on Mumbai's Girgaon Chowpatty: Why are they appearing more frequently?

**The Indian EXPRESS**  
JOURNALISM OF COURAGE

Jellyfish blooms, including those of the blue button jellyfish (also known as *Porpita Porpita*), usually wash up around Ganpati Visarjan each year, but this time, they arrived much earlier.

## Expected Question

**The growth of jellyfish blooms (also known as *Porpita Porpita*) is influenced by:**

1. Warm water
2. Salinity
3. High level of nitrogen and phosphorous
4. Ocean currents

**Select the correct answer using the codes given below:**

- (a) 1, 3 and 4 only
- (b) 2 and 3 only
- (c) 1, 2, 3 and 4
- (d) 2 and 4 only

## PYQ 2011

**47. There is a concern over the increase in harmful algal blooms in the seawaters of India. What could be the causative factors for this phenomenon?**

1. Discharge of nutrients from the estuaries.
2. Run-off from the land during the monsoon.
3. Upwelling in the seas.

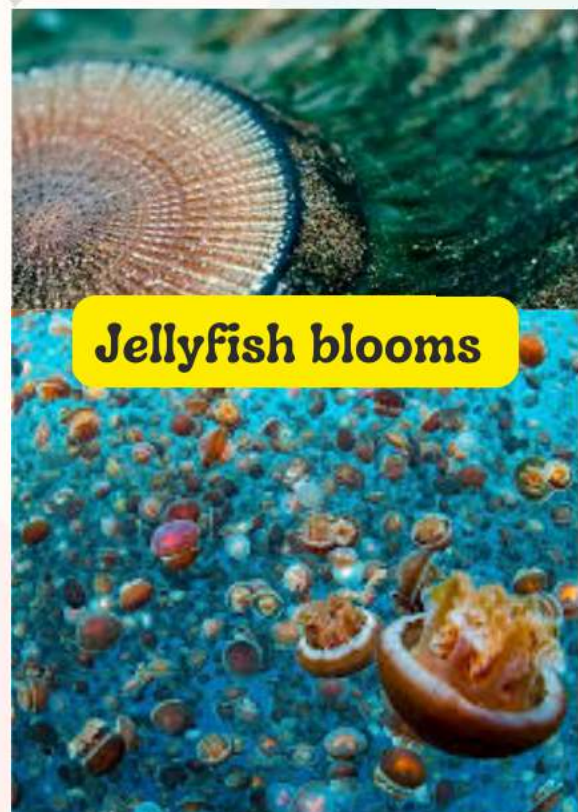
Select the correct answer from the codes given below:

- (a) 1 only
- (b) 1 and 2 only
- (c) 2 and 3 only
- (d) 1, 2 and 3

## Explanation

Blue button jellyfish (*Porpita porpita*) blooms are driven by factors like water temperature, salinity, ocean currents, and nutrient availability, creating ideal conditions for their growth.

Therefore, option (c) is the correct answer



**Jellyfish blooms**



# PM Modi: Jan Dhan has led to over 53 crore bank accounts, women being empowered

Prime Minister Narendra Modi criticised the Congress, saying its government in the past nationalised banks in the name of the poor but they never got access to banking.

**The Indian EXPRESS**  
JOURNALISM OF COURAGE

## Expected Question

Which of the following statements about the Pradhan Mantri Jan Dhan Yojana (PMJDY) account-holders is not correct ?

- (a) Eligible PMJDY account holders can avail overdraft (OD) facility up to Rs 10,000.
- (b) PMJDY accounts are eligible for Direct Benefit Transfers (DBT)
- (c) PMJDY account-holders were given RuPay debit cards
- (d) These accounts do not earn interest on deposits like regular accounts

## PYQ 2015

'Pradhan Mantri Jan-Dhan Yojana' has been launched for

- (a) providing housing loan to poor people at cheaper interest rates
- (b) promoting women's Self-Help Groups in backward areas
- (c) promoting financial inclusion in the country
- (d) providing financial help to the marginalized communities

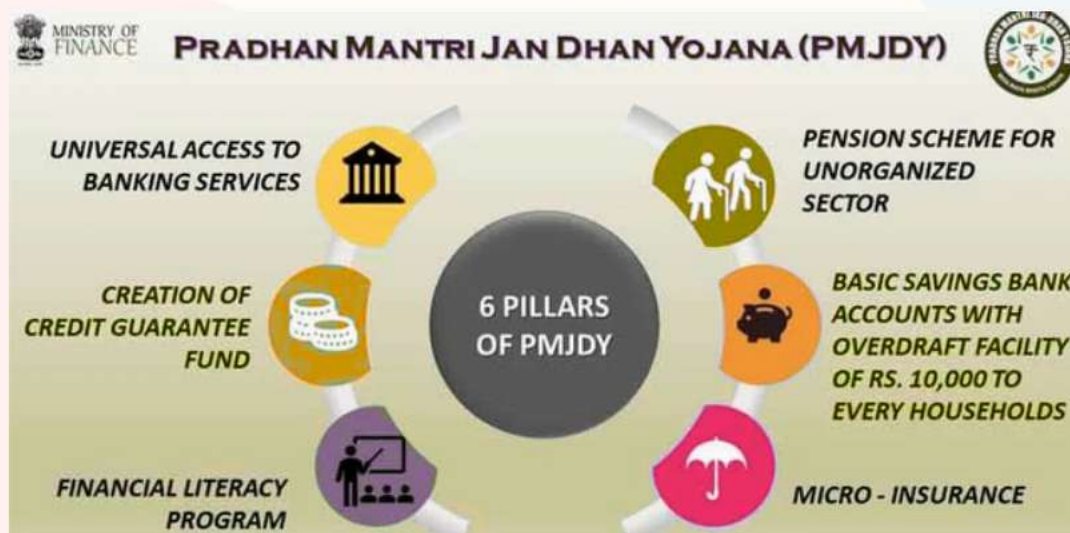
## Explanation

- **Launched:** August 28, 2014, as a national mission for financial inclusion.
- **Global Recognition:** Holds the Guinness World Record for opening over 18 million bank accounts in one week (Aug 23–29, 2014).
- **Objective:** Open Basic Savings Bank Accounts for the unbanked population.

### Features:

- No minimum balance required.
- Interest earned on deposits like regular savings accounts.

Therefore, option (d) is the correct answer





# Cotton exports to Bangladesh hit as Dhaka's Western garment orders dry up

The decline in orders from Bangladesh has had a spillover effect on the Indian textile industry, which supplies raw materials and other input items to Bangladesh.

**The Indian EXPRESS**  
JOURNALISM OF COURAGE

## Expected Question

**Consider the following statements:**

**Statement 1:** There is a decline in orders from Bangladesh which had a spillover effect on the Indian textile industry.

**Statement 2:** Indian cotton exports and raw material supply to Bangladesh have started to decline.

**Which one of the following is correct in respect of the above statements?**

- (a) Both Statement 1 and Statement 2 are correct and Statement 2 is the correct explanation for Statement 1.
- (b) Both Statement 1 and Statement 2 are correct and Statement 2 is not the correct explanation for Statement 1.
- (c) Statement 1 is correct but Statement 2 is incorrect.
- (d) Statement 1 is incorrect but Statement 2 is correct.

## PYQ 2020

Consider the following statements :

1. The value of Indo-Sri Lanka trade has consistently increased in the last decade.
2. "Textile and textile articles" constitute an important item of trade between India and Bangladesh.
3. In the last five years, Nepal has been the largest trading partner of India in South Asia.

Which of the statements given above is/are correct ?

- (a) 1 and 2 only
- (b) 2 only
- (c) 3 only
- (d) 1, 2 and 3

## Explanation

**Impact of Bangladesh's Textile Slowdown on India:**

- **Statement 1:**
  - The drop in garment orders from Bangladesh has negatively impacted the Indian textile sector, which supplies raw materials and inputs.
- **Statement 2:**
  - Indian cotton shipments to Bangladesh have declined, even as workers in Bangladesh strive to complete existing orders using components and technical support from India.

**Correct explanation:** Statement 2 correctly explains Statement 1, as the reduced orders from the West have led to a slowdown in Bangladesh's garment production, affecting Indian exports of inputs.

**Therefore, option (a) is the correct answer**





# ONGC Videsh seeks US nod to operate projects in sanction-hit Venezuela under 'Chevron model'

**The Indian EXPRESS**  
JOURNALISM OF COURAGE

## Expected Question

Which of the following countries is following the "Chevron model" which allows foreign oil companies to operate after receiving specific approvals?

- (a) Russia
- (b) Iraq
- (c) UAE
- (d) Venezuela

## PYQ 2024

Consider the following statements :

*Statement-I :*

Recently, Venezuela has achieved a rapid recovery from its economic crisis and succeeded in preventing its people from fleeing/emigrating to other countries.

*Statement-II :*

Venezuela has the world's largest oil reserves.

Which one of the following is correct in respect of the above statements ?

- (a) Both Statement-I and Statement-II are correct and Statement-II explains Statement-I
- (b) Both Statement-I and Statement-II are correct, but Statement-II does **not** explain Statement-I
- (c) Statement-I is correct, but Statement-II is incorrect
- (d) Statement-I is incorrect, but Statement-II is correct

## Explanation

### ONGC Videsh Seeks US Clearance for Venezuelan Oil Projects

- ONGC Videsh (OVL) has sought special permission from the US to operate two oil projects in sanctioned Venezuela.
- The goal is to recover over \$500 million in pending dividends and boost oil output.
- OVL plans to follow the "Chevron model", which allows select foreign firms to operate in Venezuela with a specific US license.





# Why an FIR has named the Badlapur school in alleged sexual assault case against two minors

**The Indian EXPRESS**  
JOURNALISM OF COURAGE

The police added Section 21 of the POCSO Act in the FIR against school authorities for failing to report the alleged sexual assault. Here is how the mandatory reporting provision works.

## Expected Question

**With reference to the Protection of Children from Sexual Offences (POCSO) Act, consider the following statements:**

1. The act was enacted as a special legislation to address incidents of sexual abuse of children.
2. The Act gives the well-being of the child paramount importance at every stage.
3. The Act makes it obligatory for anyone who has an apprehension that a child is being abused, to report the matter to the authorities.

**How many of the statements given above are correct?**

- (a) Only one
- (b) Only two
- (c) All three
- (d) None

## PYQ 2017

Which of the following are envisaged by the Right against Exploitation in the Constitution of India ?

1. Prohibition of traffic in human beings and forced labour
2. Abolition of untouchability
3. Protection of the interests of minorities
4. Prohibition of employment of children in factories and mines

Select the correct answer using the code given below :

- (a) 1, 2 and 4 only
- (b) 2, 3 and 4 only
- (c) 1 and 4 only
- (d) 1, 2, 3 and 4

## Explanation

The POCSO Act was enacted as a unique piece of legislation to combat child sexual abuse cases. The Act expanded the definition of abuse beyond the provisions provided under criminal law, which applied equally to adults and children. The Act prioritises the child's well-being at all stages in its wording and substance.



Therefore, option (c) is the correct answer.



# ASER study shows post-COVID recovery, but many students still lag in reading, arithmetic

Survey of 6.5 lakh children found 76% of Class 3 students, 55.2% of Class 5 students, 32.5% Class 8 students still cannot read at Class 2 level; over 66% of Class 3, Class 5 students struggle with simple maths

## Expected Question

**Q.**With reference to the latest Annual Survey of Education Report (ASER) consider the following statements:

1. It found that there is an improvement in learning levels across states, led largely by private schools.
2. For the first time, it also included a section on digital literacy and found that more boys than girls report knowing how to use a smartphone.

**Which of the above given statements is/are true?**

- (a) 1 only
- (b) 2 only
- (c) Both 1 and 2
- (d) Neither 1 nor 2

## Related PYQ 2022

Which of the following provisions of the Constitution of India have a bearing on Education?

1. Directive Principles of State Policy
2. Rural and Urban Local Bodies
3. Fifth Schedule
4. Sixth Schedule
5. Seventh Schedule

Select the correct answer using the codes given below :

- (a) 1 and 2 only
- (b) 3, 4 and 5 only
- (c) 1, 2 and 5 only
- (d) 1, 2, 3, 4 and 5

## Explanation

- The latest Annual Survey of Education Report (ASER) comes bearing some rare good news: an improvement in learning levels across states, led largely by government schools. Hence, statement 1 is not correct.
- For the first time, ASER also included a section on digital literacy – access, ownership and use of smartphones, and basic digital skills – among 14-16-year-olds. It found that more boys than girls report knowing how to use a smartphone – 85.5% boys compared to 79.4% girls. Hence, statement 2 is correct.
- Therefore, (b) is the correct answer.

Annual Status of Education Report







Ministry of Jal Shakti



Signing of Memorandum of Understanding (MoU) on Modified Parbati-Kalisindh-Chambal-ERCP (PKC-ERCP) Link Project amongst States of Madhya Pradesh & Rajasthan and Govt. of India

## Expected Question

**Q. Parbati and Kalisindh, which were recently in the news as part of the Government of India's National Perspective Plan (NPP) for the interlinking of rivers (ILR), are tributaries of which of the following river?**

- (a) Yamuna
- (b) Chambal
- (c) Ghaggar
- (d) Narmada

## Related PYQ 2016

Recently, linking of which of the following rivers was undertaken?

- (a) Cauvery and Tungabhadra
- (b) Godavari and Krishna
- (c) Mahanadi and Sone
- (d) Narmada and Tapi

## Explanation

- A **Memorandum of Understanding (MoU)** was signed between Rajasthan and Madhya Pradesh to implement the Modified Parbati-Kalisindh-Chambal Eastern Rajasthan Canal Project (PKC-ERCP) river link project.
- This project is being implemented as part of the Government of India's National Perspective Plan (NPP) for the interlinking of rivers (ILR).
- Parbati-Kalisindh-Chambal (PKC): It is a river-linking initiative designed to divert surplus water from the Parbati, Newaj, and Kalisindh rivers to the **Chambal River**.
- It is part of the 30 links in the National Perspective Plan (1980), formulated by the Central Water Commission and the Union Ministry of Irrigation.
- It aims to provide water for domestic use, optimise water resources within the Chambal basin, and benefit regions in Madhya Pradesh and Rajasthan.



# India's reliance on China for critical minerals | Explained

Does China have unparalleled dominance in the critical minerals sector? How was it able to do so? What are the minerals for which India is heavily dependent on China? Why has India not been able to excavate the lithium reserves found in Jammu and Kashmir?

## Expected Question

**Q With reference to critical minerals, consider the following statements:**

1. The Government of India has identified a list of 25 critical minerals essential for the country.
2. Critical minerals are classified based on their economic importance and supply-chain risks.
3. Silicon and Graphite are included in the list of critical minerals.

**Which of the statements given above is/are correct?**

- a) 1 and 2 only      b) 2 and 3 only  
c) 1 and 3 only      d) 1, 2, and 3

## Related PYQ 2019

With reference to the management of minor minerals in India, consider the following statements :

1. Sand is a 'minor mineral' according to the prevailing law in the country.
2. State Governments have the power to grant mining leases of minor minerals, but the powers regarding the formation of rules related to the grant of minor minerals lie with the Central Government.
3. State Governments have the power to frame rules to prevent illegal mining of minor minerals.

Which of the statements given above is/are correct?

- (a) 1 and 3 only  
(b) 2 and 3 only  
(c) 3 only  
(d) 1, 2 and 3

## Explanation

### Critical Minerals

- These minerals are building blocks of essential modern-day technologies and are at risk of supply chain disruptions due to limited global production and geopolitical factors. Hence, statement 2 is correct. e.g., Lithium, cobalt, nickel, copper, rare earth elements, etc.
  - Government of India has released a list of 30 critical minerals for India. Hence, statement 1 is not correct.
  - These minerals are - Antimony, Beryllium, Bismuth, Cobalt, Copper, Gallium, Germanium, Graphite, Hafnium, Indium, Lithium, Molybdenum, Niobium, Nickel, PGE, Phosphorous, Potash, REE, Rhenium, Silicon, Strontium, Tantalum, Tellurium, Tin, Titanium, Tungsten, Vanadium, Zirconium, Selenium, and Cadmium. Hence, statement 3 is correct.



## Donald Trump threatens to take over Panama Canal over 'ridiculous fees'

### Expected Question

Q. It is an artificial waterway that connects the Caribbean Sea with the Pacific Ocean. The country associated with this waterway has recently decided to not renew the Memorandum of Understanding on the Belt and Road Initiative (BRI) Identify the subject of the statements.

- (a) Danube-Black Sea Canal
- (b) Houston Ship Canal
- (c) Suez Canal
- (d) Panama Canal

### PYQ 2011

90. Between India and East Asia, the navigation-time and distance can be greatly reduced by which of the following ?

1. Deepening the Malacca straits between Malaysia and Indonesia.
2. Opening a new canal across the Kra isthmus between the Gulf of Siam and Andaman Sea.

Which of the statements given above is/are correct ?

- (a) 1 only
- (b) 2 only
- (c) Both 1 and 2
- (d) Neither 1 nor 2

### Explanation

- China's Assistant Foreign Minister Zhao Zhiyuan on February 7 summoned Panama's Ambassador to China to lodge "solemn representations" over its decision to not renew the Memorandum of Understanding on the Belt and Road Initiative (BRI). Therefore, option (d) is the correct answer.





# What is e-rupee and why do Google Pay, PhonePe want to join RBI's digital rupee project?

Google Pay, Amazon Pay, and PhonePe are looking to join the RBI's digital rupee pilot project. What exactly is the e-rupee, how is it different from banknotes, and what was the need for it?

## Expected Question

Consider the following statements in respect of the digital rupee:

1. It is a sovereign currency issued by the Reserve Bank of India in alignment with its monetary policy.
2. It appears as a liability on the RBI's balance sheet.
3. It is not freely convertible against commercial bank money and cash.

Which of the statements given above are correct?

- (a) 1 and 2 only
- (b) 2 and 3 only
- (c) 2 only
- (d) 1, 2 and 3

## Related PYQ 2023

With reference to Central Bank digital currencies, consider the following statements :

1. It is possible to make payments in a digital currency without using US dollar or SWIFT system.
2. A digital currency can be distributed with a condition programmed into it such as a time-frame for spending it.

Which of the statements given above is/are correct?

- (a) 1 only
- (b) 2 only
- (c) Both 1 and 2
- (d) Neither 1 nor 2

## Explanation

- The Central Bank Digital Currency (CBDC) – digital rupee or e-rupee (₹) is a legal tender issued by the RBI in digital form. Hence, statement 1 is correct.
- E-rupees will be issued in the same denominations as paper currency and coins and distributed through intermediaries, i.e. banks. Transactions will be processed through a digital wallet provided by the participating banks and kept on mobile phones and gadgets. It is not insured against inflation

## DIGITAL RUPEE

CENTRAL BANK DIGITAL CURRENCY





# IIT Madras and ISRO develop SHAKTI-based semiconductor chip under Make in India

A joint effort with ISRO Inertial Systems Unit, Thiruvananthapuram, the chip was manufactured at Semiconductor Laboratory Chandigarh & packaged at Tata Advanced Systems, Karnataka, showcasing a major step towards 'Atmanirbhar Bharat' in addressing computing needs for Space and other sectors

## Expected Question

**Q. With reference to the Indigenous RISC-V Controller for Space Applications (IRIS) consider the following statements:**

1. IRIS has been jointly developed by ISRO and IIT Madras.
2. It is built on the SHAKTI processor baseline, which is based on the RISC-V architecture.

**Which of the statements given above is/are correct?**

- (a) 1 only
- (b) 2 only
- (c) Both 1 and 2
- (d) Neither 1 nor 2

## Explanation

- In a strategic move to strengthen indigenous semiconductors development for the country's various space-based applications.
- IRIS has been built on the SHAKTI processor baseline. This allows a wide deployment onto diverse domains from Internet of Things (IoT) to compute systems that are inbuilt in various strategic areas.
- SHAKTI belongs to a class of systems on RISC-V, which is an open-source Instruction Set Architecture used for designing custom processors. SHAKTI, supported by the Electronics and IT, is a flagship initiative to promote indigenous development of microprocessor-based products offering high-end security for users.
- Therefore, (c) is the correct answer.





# Next Manipur CM choice tricky, President's Rule one option on Centre's table

Among Kuki-Zos and Meiteis, groups on either side of the ethnic divide in the state, there are starkly different views on the road forward.

## Expected Question

**Q. With reference to President Rule, consider the following statements:**

1. The Supreme Court comprehensively examined the power to impose President's Rule and its effect on Centre-state relations in the case of S R Bommai v Union of India.
2. The President's power to issue a proclamation under Article 356 cannot be subject to judicial review.
3. Manipur and Uttar Pradesh are the states (including UTs) that have spent the most time under central control.

**How many of the above statements are correct?**

- (a) Only one                      (b) Only two  
(c) All three                      (d) None

## PYQ 2017

96. Which of the following are **not** necessarily the consequences of the proclamation of the President's rule in a State ?

1. Dissolution of the State Legislative Assembly
2. Removal of the Council of Ministers in the State
3. Dissolution of the local bodies

Select the correct answer using the code given below :

- (a) 1 and 2 only  
(b) 1 and 3 only  
(c) 2 and 3 only  
(d) 1, 2 and 3

## Explanation

### Article 356 of the Constitution: President's Rule

- Statement 1 – Correct - The S.R. Bommai v. Union of India (1994) case ruled that the President's Rule is subject to judicial review, and the court can examine it for illegality, mala fide intent, or abuse of power.
- Statement 2 – Not Correct - The Supreme Court cannot assess the correctness of the President's subjective decision, but it can examine whether the material basis is relevant.

Statement 3 – Not Correct - The latest imposition of President's Rule was in Puducherry (2021), where the Congress government lost majority. Puducherry has been under President's Rule for over 2,739 days, mainly due to infighting and defections.

- **Therefore, (a) is the correct answer.**



# Nasa's PUNCH mission to image sun's atmosphere, track origins of solar winds

This is the first time that a solar mission has been specifically designed to make use of the polarisation of light to measure the sun's corona and solar wind in 3D.

## Expected Question

**Q. With reference to the solar corona, consider the following statements:**

1. These are constantly spewing gases and particles into space in the form of solar wind.
2. They are electrically neutral.
3. They travel very slowly and cannot reach the farthest parts of the solar system.

**How many of the statements given above are correct?**

- (a) Only one                      (b) Only two  
(c) All three                    (d) None

## Related PYQ 2018

67. With reference to solar power production in India, consider the following statements :

1. India is the third largest in the world in the manufacture of silicon wafers used in photovoltaic units.
2. The solar power tariffs are determined by the Solar Energy Corporation of India.

Which of the statements given above is/are correct ?

- (a) 1 only  
(b) 2 only  
(c) Both 1 and 2  
(d) Neither 1 nor 2

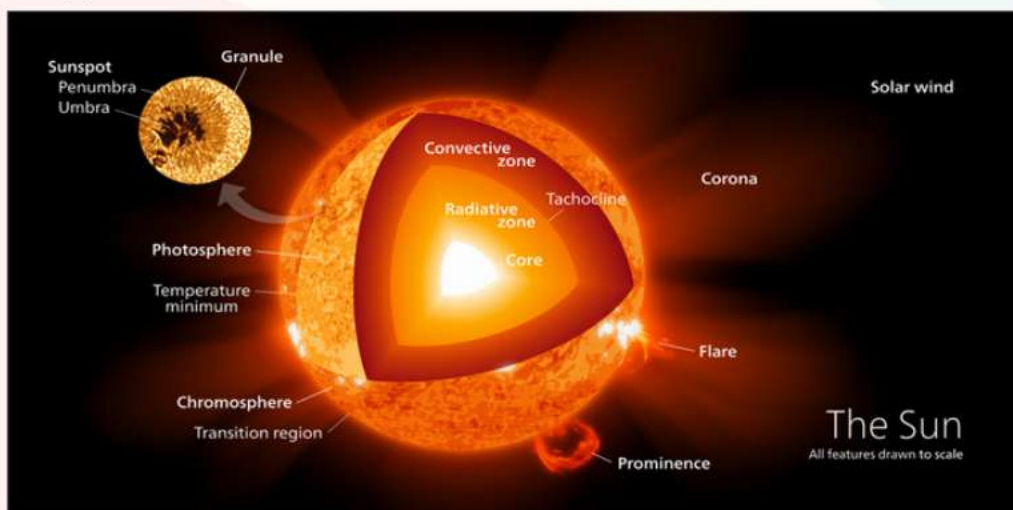
## Explanation

- The Space Docking Experiment (or SpaDeX) made India only the fourth country to accomplish the technically difficult accomplishment of combining two fast-moving satellites in space.

**What is a solar corona?**

- The Sun constantly emits gases and particles into space in the form of solar wind. These particles are electrically charged and originate in the Sun's heated outer atmosphere, known as the solar corona. Hence, statement 1 is correct and statement 2 is not correct.
- Solar wind can travel millions of miles per hour and reach the furthest reaches of the solar system. Hence, statement 3 is not correct.
- These solar winds create space weather. Their frequency and intensity vary according to the solar activity cycle, which is a periodic 11-year fluctuation in the Sun's activity as determined by sunspot observations. These dots are signs of solar activity, and the more the activity, the more severe the space weather.
- The current solar cycle started in late 2019. The cycle reached its peak in November 2023, and we are now in the midst of an extended era of high solar activity.

Therefore, option (a) is the correct answer.





# Relocating villages from tiger reserves: Why it is needed, issues plaguing the process

The Tribal Affairs ministry last week directed states to compile data on the number of villages and families residing in tiger reserves, following complaints of alleged evictions from villages across Tadoba, Durgavati and Buxa reserves over the past few months

## Expected Question

**Q. Which of the following act/s is/are responsible for relocating villages from tiger reserves?**

1. Forest Rights Act (FRA), 2006
2. Wildlife Protection Act (WPA), 1972
3. Environment (Protection) Act, 1986

**Select the correct answer using the codes given below:**

- (a) 1 only                      (b) 2 only  
(c) 1, 2 and 3                (d) 1 and 2 only

## PYQ 2018

98. Consider the following statements :

1. The definition of "Critical Wildlife Habitat" is incorporated in the Forest Rights Act, 2006.
2. For the first time in India, Baigas have been given Habitat Rights.
3. Union Ministry of Environment, Forest and Climate Change officially decides and declares Habitat Rights for Primitive and Vulnerable Tribal Groups in any part of India.

Which of the statements given above is/are correct ?

- (a) 1 and 2 only  
(b) 2 and 3 only  
(c) 3 only  
(d) 1, 2 and 3

## Explanation

- The Ministry of Tribal Affairs (MoTA) asked states last week to compile statistics on the number of villages and households within India's tiger reserves, as well as details on communities evacuated outside, and the status of forest land and produce claims settled under the Forest Rights Act of 2006.
- The Centre's instruction was sparked by complaints and petitions over suspected evictions received from villages across Tadoba, Durgavati, and Buxa tiger reserves in recent months.

### What governs the relocation process?

- The Forest Rights Act (FRA) was passed in 2006, and the Wildlife Protection Act of 2006 was amended. These two laws are critical to implementing community relocations.
- The WPA authorises wildlife managers in national parks and tiger reserves to develop safe, people-free zones. However, it must be viewed in conjunction with the FRA rules, which allow individuals to claim land titles and gather non-timber forest produce such as mahua, gooseberry, and tendu leaves. According to these statutes, relocation is voluntary and must be carried out under 'mutually agreed terms and conditions.'
- Therefore, option (d) is the correct answer.



# India's LNG imports at 44-month high in June as gas-based power output jumps amid severe heatwave

Provisional LNG vessel tracking data from commodity market analytics firm Kpler shows that India imported 2.60 million tonnes (mt) of LNG in June, the highest in as many as 44 months.

## Expected Question

**Q. With reference to the India-Qatar trade, consider the following statements:**

1. The balance of trade between the two countries is heavily skewed in India's favour.
2. LNG imports accounted for 50 per cent of India's overall imports from Qatar.

**Which of the statements given above is/are correct?**

- (a) 1 only
- (b) 2 only
- (c) Both 1 and 2
- (d) Neither 1 nor 2

## Related PYQ 2019

Consider the following statements :

1. Petroleum and Natural Gas Regulatory Board (PNGRB) is the first regulatory body set up by the Government of India.
2. One of the tasks of PNGRB is to ensure competitive markets for gas.
3. Appeals against the decisions of PNGRB go before the Appellate Tribunals for Electricity.

Which of the statements given above are correct?

- (a) 1 and 2 only
- (b) 2 and 3 only
- (c) 1 and 3 only
- (d) 1, 2 and 3

## Explanation

- The India-Qatar trade relationship has been mostly driven by New Delhi's significant purchases of liquefied natural gas (LNG), of which Doha is India's major supplier.
  - The trade balance between the two countries is strongly skewed in Qatar's favour, with LNG topping New Delhi's import list from Doha. Hence, statement 1 is not correct.
  - LNG imports represented 50% of India's total imports from Qatar in the first 11 months of 2024, at \$11.49 billion. Notably, other major imports were fossil fuel-related commodities and goods such as liquefied petroleum gas (LPG), crude oil, plastics, and petrochemicals. Hence, statement 2 is correct.
- Therefore, option (b) is the correct answer.





### Expected Question

**Q. The Fiscal Responsibility and Budget Management (FRBM) Act stated:**

1. The fiscal deficit should ideally not exceed 6% of GDP.
2. The revenue deficit — the gap between everyday income and everyday expenditures of the government — should be zero.

**Which of the statements given above is/are correct?**

- (a) 1 only
- (b) 2 only
- (c) Both 1 and 2
- (d) Neither 1 nor 2

### Related PYQ 2019

Consider the following statements :

1. The Fiscal Responsibility and Budget Management (FRBM) Review Committee Report has recommended a debt to GDP ratio of 60% for the general (combined) government by 2023, comprising 40% for the Central Government and 20% for the State Governments.
2. The Central Government has domestic liabilities of 21% of GDP as compared to that of 49% of GDP of the State Governments.
3. As per the Constitution of India, it is mandatory for a State to take the Central Government's consent for raising any loan if the former owes any outstanding liabilities to the latter.

Which of the statements given above is/are correct ?

- (a) 1 only
- (b) 2 and 3 only
- (c) 1 and 3 only
- (d) 1, 2 and 3

### Explanation

- India instituted prudential norms in 2003 often called the Fiscal Responsibility and Budget Management (FRBM) Act. The FRBM Act stated two things.
- First, the fiscal deficit should not be more than 3% of GDP. In other words, the entire amount of money that India's central government could borrow to cover the difference between its total income and total expenditure — known as the fiscal deficit — was limited to 3% of the country's GDP. Hence, statement 1 is not correct.
- Second, the revenue deficit, or the difference between the government's everyday income and expenditures, should be zero. Hence, statement 2 is correct.
- The rationale behind these two restrictions was that the government should only borrow for capital expenditures (rather than paying increased salaries and other equivalent everyday expenses).

Therefore, option (b) is the correct answer.



# Could Amritpal Singh lose his MP seat under Article 101(4)? Here is why he needn't worry

## Expected Question

**Q10. Consider the following statements regarding Article 101(4) of the Indian Constitution:**

1. A Member of Parliament (MP) can lose their seat if they are absent from all meetings of the House for 60 days without permission.
2. The 60-day period includes days when the House is prorogued or adjourned for more than four consecutive days.

**Which of the statements given above is/are correct?**

- (a) 1 only                      (b) 2 only  
(c) Both 1 and 2            (d) Neither 1 nor 2

## Related PYQ 2019

1. Consider the following statements :

1. The Parliament (Prevention of Disqualification) Act, 1959 exempts several posts from disqualification on the grounds of 'Office of Profit'.
2. The above-mentioned Act was amended five times.
3. The term 'Office of Profit' is well-defined in the Constitution of India.

Which of the statements given above is/are correct?

- (a) 1 and 2 only  
(b) 3 only  
(c) 2 and 3 only  
(d) 1, 2 and 3

## Explanation

- Incarcerated Khadoor Sahib MP Amritpal Singh on Wednesday (February 19) moved the Punjab and Haryana High Court to attend the ongoing Parliament session, lest he lose his seat because of his prolonged absence from the House.
- Amritpal, who faces charges under the stringent National Security Act, has been detained in Dibrugarh since April 2023. He contested and won the 2024 Lok Sabha election from prison, but thus far has an attendance of only 2%, according to PRS Legislative Research data.
- The provision "If for a period of sixty days a member of either House of Parliament is without permission of the House absent from all meetings thereof, the House may declare his seat vacant," Article 101(4) says. Hence, statement 1 is correct.
- The 60 days, however, do not account for "any period during which the House is prorogued or is adjourned for more than four consecutive days". Hence, statement 2 is not correct.
- Therefore, option (a) is the correct answer.



# Bharatmala Pariyojana Phase-I likely to be completed by 2027-28: MoRTH

## Expected Question

**Q9. With reference to the Bharatmala Pariyojana, consider the following statements:**

1. The first phase of the Project, Bharatmala Pariyojana received Cabinet approval in 2017.
2. It is focused on enhanced effectiveness of already built infrastructure.
3. Greenfield Expressways are not included in the Bharatmala Pariyojana.

**How many of the statements given above are correct?**

- (a) Only one                      (b) Only two  
(c) All three                      (d) None

## Related PYQ 2023

**10. With reference to India's projects on connectivity, consider the following statements :**

1. East-West Corridor under Golden Quadrilateral Project connects Dibrugarh and Surat.
2. Trilateral Highway connects Moreh in Manipur and Chiang Mai in Thailand via Myanmar.
3. Bangladesh-China-India-Myanmar Economic Corridor connects Varanasi in Uttar Pradesh with Kunming in China.

**How many of the above statements are correct?**

- (a) Only one  
(b) Only two  
(c) All three  
(d) None

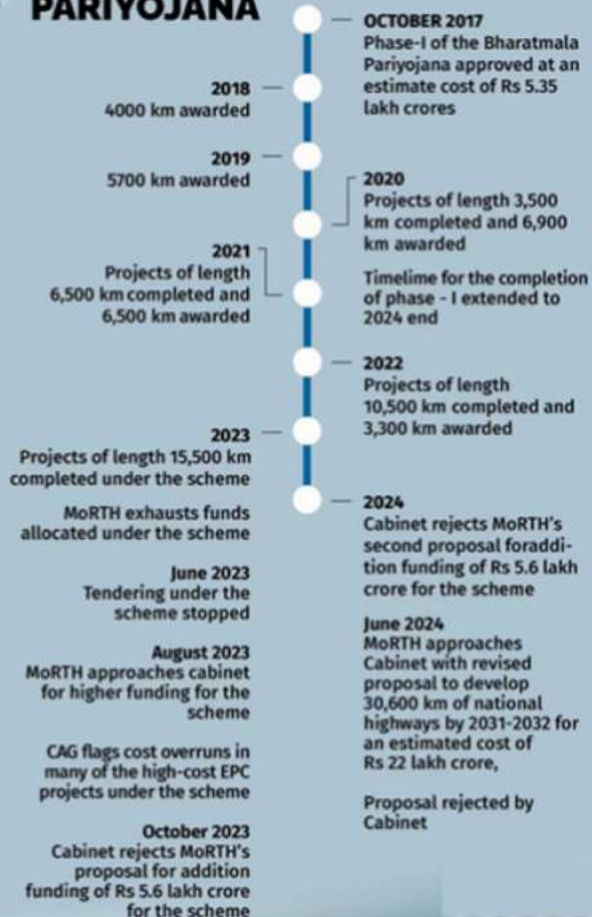
## Explanation

- While almost 76% of the total allowed length for the project has already been granted for construction, no new projects would be undertaken under the Centre's flagship Bharatmala Pariyojana, according to the Ministry of Road Transport and Highways (MoRTH) in its most recent annual report.
- Bharatmala Pariyojana Phase-1, which gained Cabinet approval in October 2017, spans 34,800 kilometres across 31 states and union territories and includes over 550 districts. Hence, statement 1 is correct.
- Bharatmala Pariyojana's overarching program focused on improving the effectiveness of existing infrastructure, multimodal integration, bridging infrastructure gaps for seamless travel, and merging National and Economic Corridors. Hence, statement 2 is correct.
- Therefore, option (b) is the correct answer.

### The six key features of the Bharatmala Pariyojana are:

- Green Field Expressway
- National Corridor Efficiency Improvement
- Economic Corridor
- Coastal Road & Port Connectivity
- Inter Corridor and Feeder Route
- International Connectivity and Border Road

### TIMELINE OF PHASE-I OF THE BHARATMALA PARIYOJANA





# PM to visit Sri Lanka after attending BIMSTEC Summit in Thailand

This will be the Prime Minister's third visit to Thailand and the first physical meeting of the BIMSTEC Leaders since the 4th BIMSTEC Summit, held in Kathmandu, Nepal, in 2018.

## Expected Question

PYQ 2016

**Q. With reference to the Bay of Bengal Initiative for Multi-Sectoral Technical and Economic Cooperation (BIMSTEC) consider the following statements:**

1. It is a regional organisation that was established in 1997.
2. The latest members to join the BIMSTEC grouping are Sri Lanka and Thailand in 2004.
3. The 6th BIMSTEC Summit will be hosted by India.

**How many of the statements given above are correct?**

- (a) Only one                      (b) Only two  
(c) All three                    (d) None

The term 'Regional Comprehensive Economic Partnership' often appears in the news in the context of the affairs of a group of countries known as

- (a) G20  
(b) ASEAN  
(c) SCO  
(d) SAARC

## Explanation

- Prime Minister Narendra Modi will visit Bangkok on April 3 and 4 for a meeting with his Thai counterpart and the BIMSTEC Summit, before travelling to Sri Lanka for a State visit from April 4 to 6.
- The 6th BIMSTEC Summit will take place on April 4, 2025, and will be hosted by Thailand, the current Chair. Hence, statement 3 is not correct.
- The Bay of Bengal Initiative for Multi-Sectoral Technical and Economic Cooperation (BIMSTEC) is a regional organisation created on June 6, 1997, with the signing of the Bangkok Declaration. Hence, statement 1 is correct.
- Initially known as BIST-EC (Bangladesh, India, Sri Lanka, and Thailand Economic Cooperation). The association is known as BIMSTEC, and it currently has seven Member States, including Myanmar, which joined on December 22, 1997, and Bhutan and Nepal in February 2004. Hence, statement 2 is not correct.





# Solar Eclipse 2025: What is a partial solar eclipse?

Partial Solar Eclipse 2025: What is a partial solar eclipse, when and where will it be visible?

## Expected Question

**Q. With reference to the solar eclipses, consider the following pairs:**

1. Annular solar eclipse – It occurs when an eclipse shifts between annular and total, with the shadow of the moon moving across the globe.
2. Hybrid solar eclipse – It occurs when the moon crosses the path of the sun close to the farthest point from Earth.

**Which of the pairs given above is/are correctly marked?**

- (a) 1 only                      (b) 2 only  
(c) Both 1 and 2            (d) Neither 1 nor 2

## Related PYQ 2019

20. On 21st June, the Sun

- (a) does not set below the horizon at the Arctic Circle  
(b) does not set below the horizon at Antarctic Circle  
(c) shines vertically overhead at noon on the Equator  
(d) shines vertically overhead at the Tropic of Capricorn

## Explanation

- A partial solar eclipse will occur on Saturday (March 29), when the moon's shadow covers a portion of the sun. This phenomenon will be observed in areas of the United States, Canada, Europe, Russia, and Africa, but not in India.
- A solar eclipse occurs when the moon passes between the sun and Earth. The moon completely or partially covers the sun's light, casting a shadow over some portions of the world.
- An annular solar eclipse happens when the moon crosses the path of the sun near its farthest point from Earth. This is when only the sun's edge becomes visible, resembling a ring of fire. Hence, statement 1 is not correct.
- During both partial and annular eclipses, the areas outside the moon's umbra—the central and darkest section of the lunar shadow—will experience a partial solar eclipse.
- The most rare variety is a hybrid solar eclipse, which occurs only once every decade. It occurs as an annular eclipse transitions to totality, with the moon's shadow sweeping across the world. In this situation, some portions of the planet see a total solar eclipse, while others view an annular eclipse. The last hybrid solar eclipse happened in April 2023. Hence, statement 2 is not correct.
- Therefore, option (d) is the correct answer.

## Variants of solar eclipses





## Martian dust may pose health risk to humans exploring red planet, study finds

### Expected Question

**Q. Consider the following statements about the Martian dust:**

**Statement 1:** It is likely to cause respiratory issues and an elevated risk of disease among astronauts.

**Statement 2:** The fine particles of the dust could penetrate deep into the lungs and enter the bloodstream.

**Which one of the following is correct in respect of the above statements?**

- (a) Both Statement 1 and Statement 2 are correct and Statement 2 is the correct explanation for Statement 1.
- (b) Both Statement 1 and Statement 2 are correct and Statement 2 is not the correct explanation for Statement 1.
- (c) Statement 1 is correct but Statement 2 is incorrect.
- (d) Statement 1 is incorrect but Statement 2 is correct.

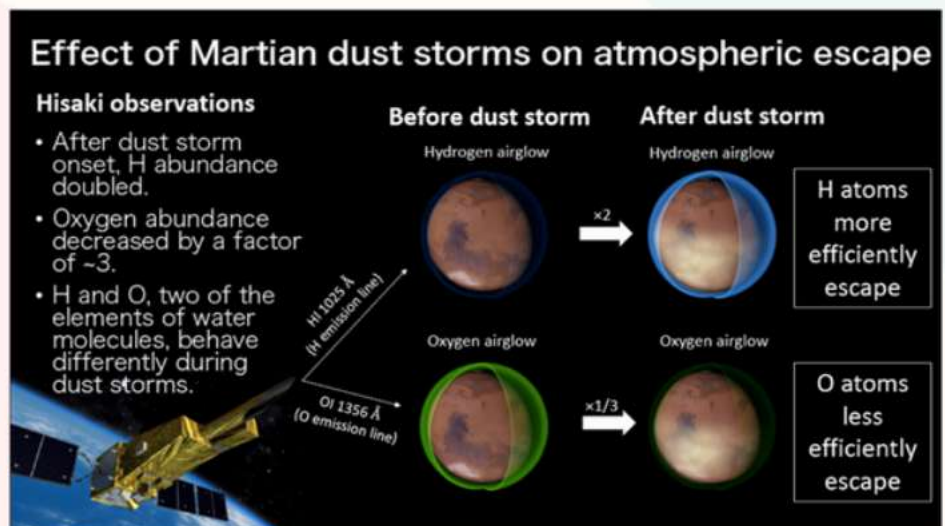
### Explanation

#### Martian Dust and Human Health Risks

- Statement 1 – Correct - Martian dust particles are small enough to penetrate deep into the lungs and bloodstream, posing respiratory and overall health risks to astronauts.
- Statement 2 – Correct - The study warns of long-term exposure risks due to frequent dust storms on Mars – including planet-wide storms occurring every three Martian years (approx. every 5.6 Earth years).

However, Statement 2 is not the correct explanation for Statement 1 – while both deal with dust, the health risks and the frequency of storms are related but not causally explanatory.

Correct Answer: (a) Both statements are correct, but Statement 2 is not the correct explanation for Statement 1.







### Expected Question

**Q. With reference to anti-dumping duty, consider the following statements:**

1. In India, the Department of Commerce recommends and levies the anti-dumping duty.
2. Indian law provides that the anti-dumping duty to be recommended/levied shall not exceed the dumping margin.

**Which of the statements given above is/are true?**

- (a) 1 only                                      (b) 2 only  
(c) Both 1 and 2                              (d) Neither 1 nor 2

### Related PYQ 2016

There has been a persistent deficit budget year after year. Which action/actions of the following can be taken by the Government to reduce the deficit?

1. Reducing revenue expenditure
2. Introducing new welfare schemes
3. Rationalizing subsidies
4. Reducing import duty

Select the correct answer using the code given below.

- (a) 1 only  
(b) 2 and 3 only  
(c) 1 and 3 only  
(d) 1, 2, 3 and 4

### Explanation

#### Anti-Dumping Measures under WTO and Indian Law

- Statement 1 – Not Correct -In India, anti-dumping duties are recommended by the Directorate General of Trade Remedies (DGTR) under the Department of Commerce, but they are levied by the Ministry of Finance (CBIC).
- The Central Board of Indirect Taxes and Customs (CBIC) must accept or reject the recommendation within three months.
- Statement 2 – Correct -WTO rules allow countries to impose anti-dumping duties up to the dumping margin (difference between normal value and export price).
- Indian law follows the same principle. Example: Provisional anti-dumping duty of up to \$873/tonne on Chinese aluminium foil.



## Syria's sectarian violence reached capital, terrorizing Alawites, residents say

### Expected Question

**Q5. The Alawite community was recently in the news. They reside in:**

- (a) Southern Africa
- (b) Levant region
- (c) South-east Asia
- (d) Atacama Desert

### Related PYQ 2016

19. Consider the following pairs :

*Community sometimes mentioned in the news*

- |             |   |            |
|-------------|---|------------|
| 1. Kurd     | : | Bangladesh |
| 2. Madhesi  | : | Nepal      |
| 3. Rohingya | : | Myanmar    |

*In the affairs of*

Which of the pairs given above is/are correctly matched?

- (a) 1 and 2
- (b) 2 only
- (c) 2 and 3
- (d) 3 only

### Explanation

- According to the Syrian Observatory for Human Rights, those murdered included 745 civilians, 125 members of the government security forces, and 148 pro-Bashar al-Assad fighters.
- Bashar al-Assad is from the Alawite group, a Shia sect of Islam. The Alawites, a minority, controlled government offices under Assad and remained loyal to him.
- Alawites, also known as Alawis, are an Arab ethnoreligious minority who predominantly inhabit the Levant region of West Asia and practise Alawism.
- Therefore, option (b) is the correct answer.





## Falling Starlink satellites worry scientists, 120 fell from space in Jan

### Expected Question

**Q. With reference to Starlink, consider the following statements:**

1. It is a network of satellites that provides internet and it is operated by SpaceX.
2. It was launched in 2019.
3. Under Starlink, the satellites are placed in low Earth orbit (LEO).

**Which of the statements given above is/are correct?**

- (a) 1 only
- (b) 1 and 2 only
- (c) 2 and 3 only
- (d) 1, 2 and 3

### Explanation

- Bharti Airtel and Reliance Jio have signed separate deals with Elon Musk's SpaceX to bring the Starlink internet service to India. SpaceX has applied for a security clearance with the Indian government, but its application is currently undergoing review at the Home Ministry.
- Starlink is a network of satellites that provides internet. It is operated by SpaceX, which is Musk's aerospace company. Hence, statement 1 is correct.
- It was launched in 2019 and aims to shoot 42,000 small satellites into space, forming a globe-encircling ring just 547 km overhead. Hence, statement 2 is correct.
- Currently, the telecommunication project has around 7,000 mass-produced small satellites in low Earth orbit (LEO) – an orbit that is under altitudes of 2,000 km. Hence, statement 3 is correct.
- Therefore, option (d) is the correct answer.



# Telangana's Mudumal Megalithic Menhirs make it to tentative Unesco heritage list from India

## Expected Question

**Q. Which of the following heritage sites are located in the state of Telangana?**

1. The Mudumal Megalithic Menhirs
2. Kanger Valley National Park
3. Chausath Yogini Temples
4. Ramappa temple

**Select the correct code:**

- (a) 1 and 2 only
- (b) 2 and 4 only
- (c) 1 and 4 only
- (d) 1, 2, 3 and 4

## Related PYQ 2024

65. Consider the following properties included in the World Heritage List released by UNESCO :

1. Shantiniketan
2. Rani-ki-Vav
3. Sacred Ensembles of the Hoysalas
4. Mahabodhi Temple Complex at Bodhgaya

How many of the above properties were included in 2023 ?

- (a) Only one
- (b) Only two
- (c) Only three
- (d) All four

## Explanation

- The Mudumal Megalithic Menhirs or standing stones in Telangana's Narayanpet district, dating back approximately 3,500 to 4,000 years, have been added to a tentative list of Unesco World Heritage Sites from India. Telangana has only one Unesco World Heritage Site at Ramappa temple, inscribed in 2021, and now the Mudumal menhirs is one step closer to achieving a second inscription for the state.
- "The Mudumal menhirs represent one of India's most expansive and impeccably preserved megalithic astronomical observatory sites, showcasing an intricate and precise arrangement of boulder alignments, formations, and stone circles. Within a central area, a concentration of two distinct types of menhirs further enhances the site's uniqueness," read the dossier.
- Mudumal Menhirs is among six properties added to India's Tentative List by Unesco's World Heritage Centre in 2025. The other five are Kanger Valley National Park in Chhattisgarh, Ashokan Edict Sites in multiple states, Chausath Yogini Temples in Madhya Pradesh and Odisha, Gupta Temples in multiple states, and the Palace-Fortresses of the Bundelas in Madhya Pradesh and Uttar Pradesh.
- Therefore, option (c) is the correct answer.



# India launches Operation Brahma to aid Myanmar after deadly earthquake



India Today Video Desk

UPDATED: Mar 30, 2025 10:27 IST

## Expected Question

**Q. Consider the following statements regarding earthquakes and India's role in disaster relief:**

1. India is located at the convergence of the Indian and Eurasian tectonic plates, making the Himalayan region highly vulnerable to earthquakes.
2. The National Disaster Management Authority (NDMA) is the nodal agency responsible for earthquake preparedness and mitigation in India.
3. As part of 'Operation Brahma,' India provided 15 tonnes of relief items to Myanmar and Thailand after a severe earthquake struck both countries.

**Which of the above statements is/are correct?**

- (a) 1 and 2 only      (b) 2 and 3 only  
(c) 1 and 3 only      (d) 1, 2, and 3

## Related PYQ 2023

**Consider the following statements :**

1. In a seismograph, P waves are recorded earlier than S waves.
2. In P waves, the individual particles vibrate to and fro in the direction of wave propagation whereas in S waves, the particles vibrate up and down at right angles to the direction of wave propagation.

**Which of the statements given above is/are correct?**

- (a) 1 only  
(b) 2 only  
(c) Both 1 and 2  
(d) Neither 1 nor 2

## Explanation

- Statement 1 is correct: India is located at the convergence of the Indian and Eurasian tectonic plates, leading to high seismic activity, particularly in the Himalayan region, which is prone to frequent earthquakes.
- Statement 2 is correct: The National Disaster Management Authority (NDMA) is India's apex body for disaster preparedness, response, and mitigation, including earthquakes. It formulates policies and guidelines to minimize earthquake risks.
- Statement 3 is correct: Under 'Operation Brahma,' India provided 15 tonnes of relief materials to Myanmar and Thailand in response to a severe earthquake that impacted both countries.





## This mineral is required to activate vitamin D in the kidney and liver; find out if you are consuming enough

Notably, vitamin D tends to undergo two hydroxylation steps to become active in the body

### Expected Question

**Q. Consider the following statements:**

1. Vitamin D undergoes hydroxylation in the liver and kidneys to become active.
2. Magnesium is necessary for activating enzymes involved in the hydroxylation of vitamin D.
3. Magnesium deficiency can impair vitamin D activation in the body.

**Which of the above statements is/are correct?**

- (a) 1 and 2 only  
(b) 2 and 3 only  
(c) 1 and 3 only  
(d) 1, 2, and 3

### Related PYQ 2014

**97. Consider the following pairs :**

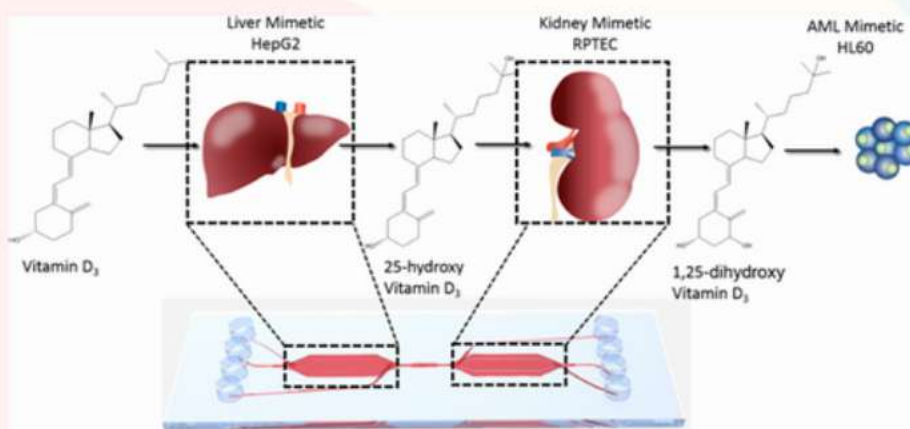
Vitamin	Deficiency disease
1. Vitamin C	: Scurvy
2. Vitamin D	: Rickets
3. Vitamin E	: Night blindness

Which of the pairs given above is/are correctly matched?

- (a) 1 and 2 only  
(b) 3 only  
(c) 1, 2 and 3  
(d) None

### Explanation

- According to studies, magnesium helps to activate vitamin D in the liver and kidneys. Magnesium aids the enzymes found in both the liver and the kidneys in completing this process smoothly and efficiently. Vitamin D may not be adequately activated if magnesium levels are low. Hence, statement 2 is not correct.
- Notably, vitamin D typically requires two hydroxylation stages to become active."The first is calcitriol (1,25-dihydroxyvitamin D), produced in the liver when vitamin D is transformed into 25-hydroxyvitamin D (calcidiol). Another process occurs in the kidney, where it is transformed into 1,25-dihydroxy vitamin D. Hence, statement 1 is correct.
- These steps require magnesium-dependent enzymes. These enzymes will be unable to conduct their activities properly if magnesium levels are low.
- Most individuals receive enough magnesium from a well-balanced diet that includes lots of green vegetables, fruits, nuts, seeds, and whole grains.





# Samyak

An Institute For Civil Services

## IAS MAINS OPTIONAL

OFFLINE & ONLINE

### PSIR

POLITICAL  
SCIENCE AND  
INTERNATIONAL  
RELATIONS



**ABHISHEK JAIN SIR**  
(FACULTY PSIR)



**SHREY MISHRA SIR**  
(SOCIOLOGY FACULTY)

### SOCIOLOGY

### GEOGRAPHY



**DIGVIJAY SINGH**  
(GEOGRAPHY FACULTY)

#### EXCLUSIVE FEATURES

FULL SYLLABUS COVERAGE  
THROUGH DIALECTICAL APPROACH

LINKAGES OF OPTIONAL IN GS-1,  
GS-2, GS-3, ETHICS & ESSAY

DETAILED PYQs DISCUSSION &  
TREND ANALYSIS

INTERLINKING TECHNIQUE  
OF SYLLABUS

PERSONAL MENTORSHIP

WEEKLY SECTIONAL &  
FULL LENGTH TEST

COMPARATIVE ASSESSMENT THROUGH **TOPPER'S ANSWER** COPIES



# Samyak

An Institute For Civil Services

# IAS

## FOUNDATION

क्लास 12<sup>th</sup> के बाद ग्रेजुएशन  
के साथ 3 वर्षीय कोर्स

# RAS

## FOUNDATION

क्लास 12<sup>th</sup> के बाद ग्रेजुएशन  
के साथ 3 वर्षीय कोर्स

# PSI

## PAPER 1<sup>st</sup> & PAPER 2<sup>nd</sup>

ONLINE COURSE  
& TEST SERIES  
AVAILABLE ON APP

Samyak  
An Institute For Civil Services



SCAN QR &  
DOWNLOAD APP NOW

### RAS-2021 RESULT

राजस्थान में पहली बार  
**TOP 10 में 9 TOPPERS**

<b>RANK 1</b>  विक्रान्त शर्मा	<b>RANK 2</b>  प्रिया बजाज	<b>RANK 4</b>  विश्वजीत	<b>RANK 5</b>  भारती गुप्ता	<b>RANK 6</b>  आकांक्षा दुबे
<b>RANK 7</b>  कंचन चौधरी	<b>RANK 8</b>  शुभम शर्मा	<b>RANK 9</b>  निधि उदसरिया	<b>RANK 10</b>  सत्यनारायण	<b>TOTAL 650+ Selection</b>

## Samyak Gurukul

A Residential Coaching For Civil Services

शिक्षा | स्वास्थ्य | संस्कार | सफलता

राजस्थान में पहली बार IAS/RAS की तैयारी  
के लिए पूर्ण सुरक्षित माहौल में गुणवत्तापूर्ण  
शिक्षा के साथ आवासीय कोचिंग

गुरुकुल की सुविधाएँ



विषय विशेषज्ञों  
द्वारा मार्गदर्शन



गुणवत्तापूर्ण  
पौष्टिक भोजन



योग प्राणायाम



सेपरेट हॉस्टल  
(Boys / Girls)



आधुनिक  
क्लासरूम



लाइब्रेरी



SAMYAK GURUKUL  
GIT CAMPUS, SITAPURA,  
JAIPUR



Live & Recorded  
Classes



Test Series  
& Solution



Personal  
Mentorship



Toppers' Strategic  
Sessions

HEAD OFFICE: NEAR RIDDHI - SIDDHI, JAIPUR 9875170111