

THINK IAS

JOIN **SAMYAK**

**Samyak**

An Institute For Civil Services

**DAILY**

**CURRENT** **गामा**

**For UPSC CSE**

**12 SEPTEMBER 2024**

 **9875170111**

 **SAMYAK IAS, NEAR RIDDHI-SIDDHI, JAIPUR**

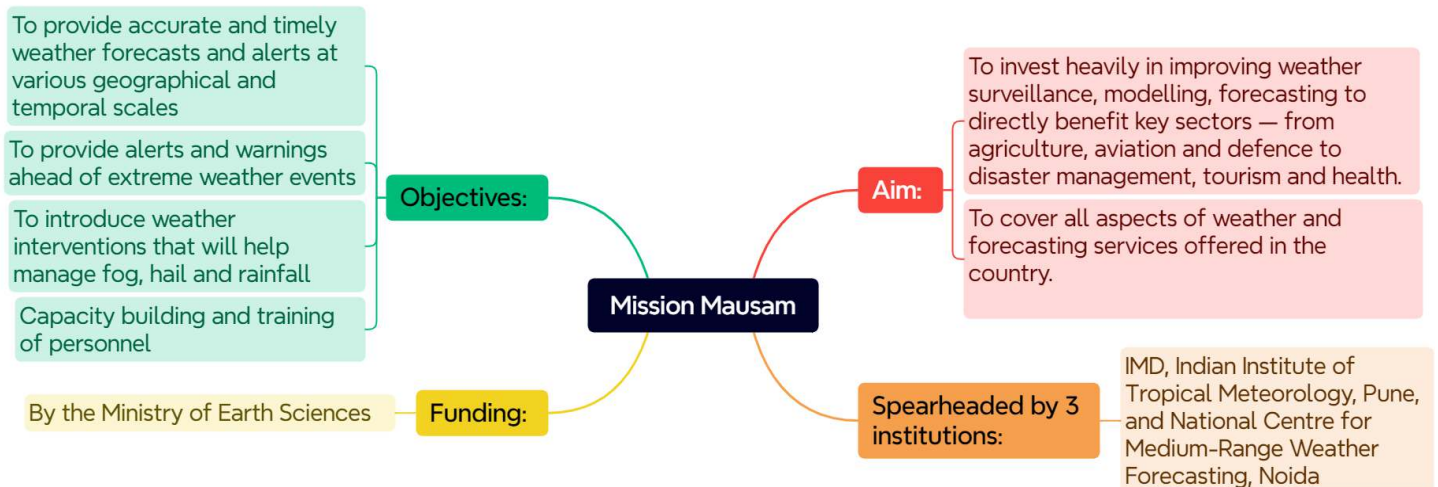


# Geography

## 1. Mission Mausam: ₹ 2,000 crore fillip for weather forecasting – Indian Express

### Context »

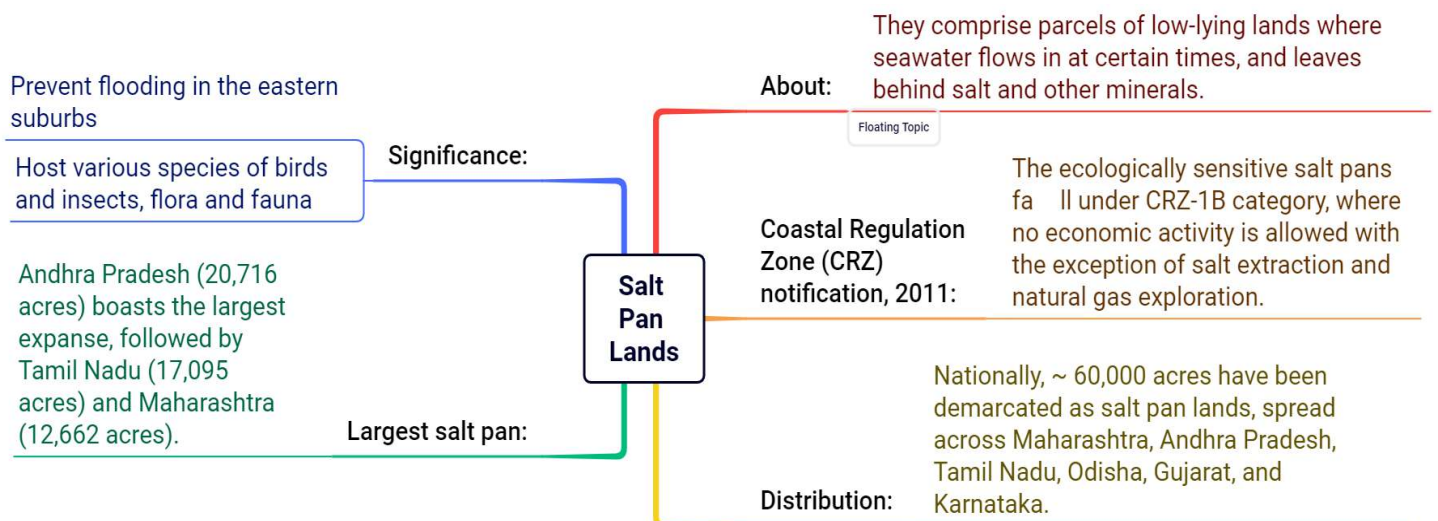
The Union Cabinet recently approved a mission to upgrade the capabilities of India's weather department in forecasting, modelling and dissemination. Mission Mausam will have a budget of Rs 2,000 crore for the first two years of its implementation.



## 2. Controversy over Mumbai's salt pans: why do these lands matter? – Indian Express

### Context »

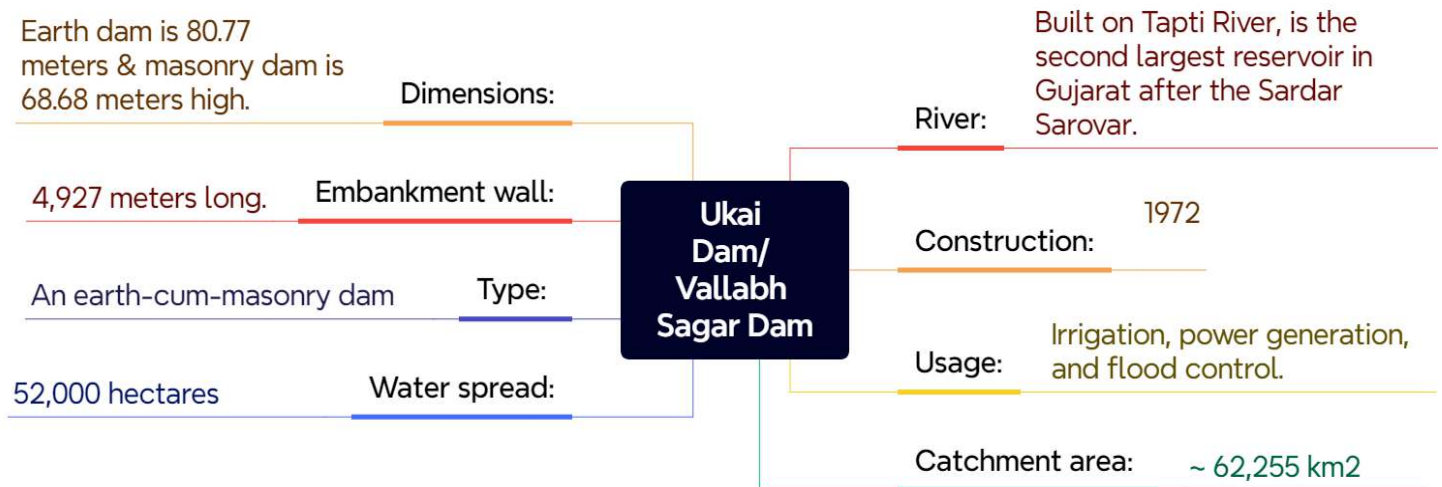
Earlier this month, the Centre approved the transfer of 256 acres of salt pan land in Mumbai to the Dharavi Redevelopment Project Pvt Ltd (DRPPL), a joint venture between Adani Realty Group and the Maharashtra government, for building rental housing for slum dwellers. This invited criticism from opposition leaders and environmentalists.



### 3. Rainfall in Maharashtra, Madhya Pradesh raises water level in Ukai Dam – Indian Express

#### Context »

Following rainfall in its upper catchment areas in Maharashtra and Madhya Pradesh, authorities discharged 1.19 lakh cusecs of water from the Ukai Dam – the second largest reservoir in Gujarat after Sardar Sarovar. With this, the water level in the dam is just five feet below the danger mark of 345 feet.



#### Tapti River »

- **About:** One of the major rivers in peninsular India & one of the three major rivers (others being Narmada River and Mahi River) flowing in an east-to-west direction.
- **Origin:** Gawilgarh Hills of the central Deccan plateau in south-central Madhya Pradesh state.
- **Mouth:** Gulf of Khambhat (an inlet of the Arabian Sea).
- Total Length: 435 miles (700 km).
- **Catchment area:** ~ 65145 sq. km. (80% in the Maharashtra region).
- Tapti Basin:
  - **North:** Saputara mountain range
  - **South:** Ajanta and Satmala mountain ranges
  - **East:** Mahadeva mountain range
- **Separation from Narmada:** By Satpura Range.
- **Major Tributaries:** Purna, Girna, Panzara, Waghur, Bori, and Aner.

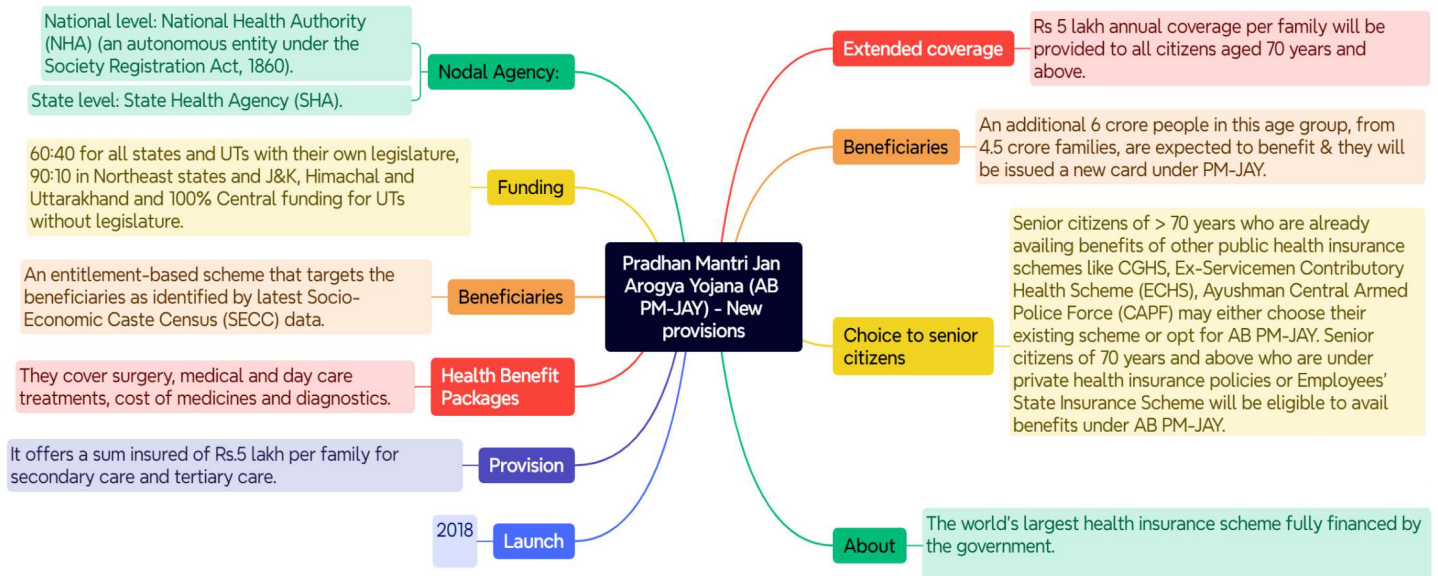


## Society

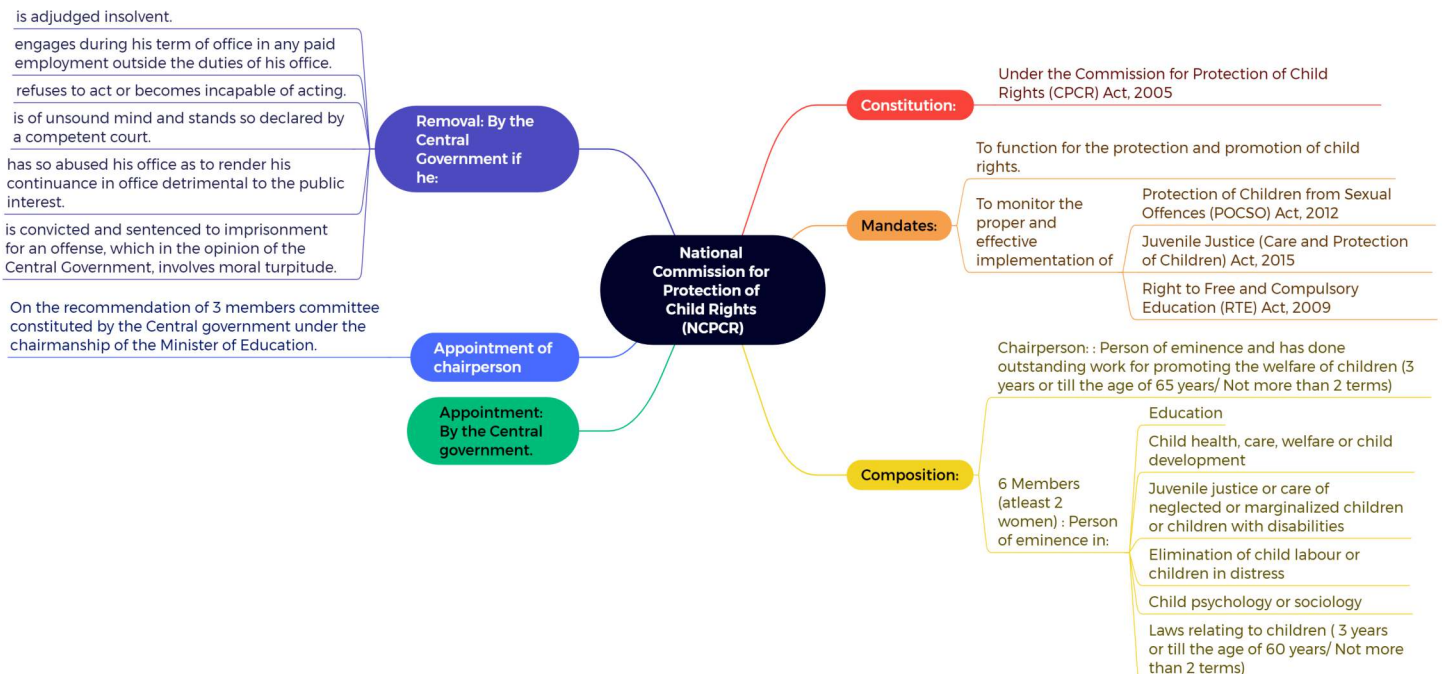
### 4. Cabinet clears health insurance cover of Rs 5 lakh for all aged 70 years and above – Indian Express

#### Context »

The Union Cabinet recently cleared the expansion of the Ayushman Bharat Pradhan Mantri Jan Arogya Yojana (AB PM-JAY) to provide health coverage to “all senior citizens aged 70 years and above irrespective of their income”.



### 5. National Commission for Protection of Child Rights (NCPCR) – The Hindu



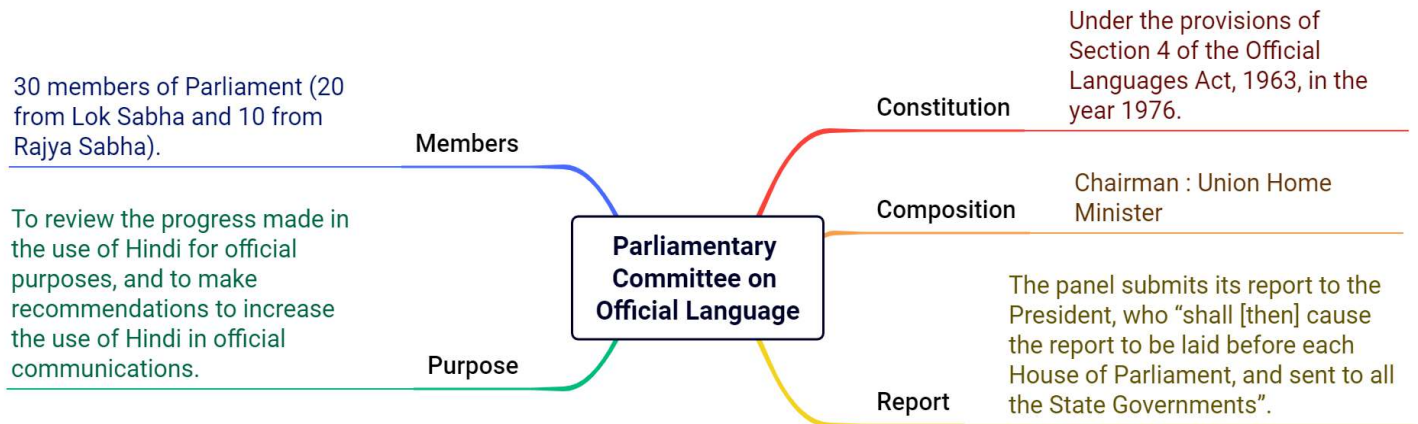


## Polity

### 6. Hindi should be generally accepted as the language of work with consensus: Shah – The Hindu

#### Context »

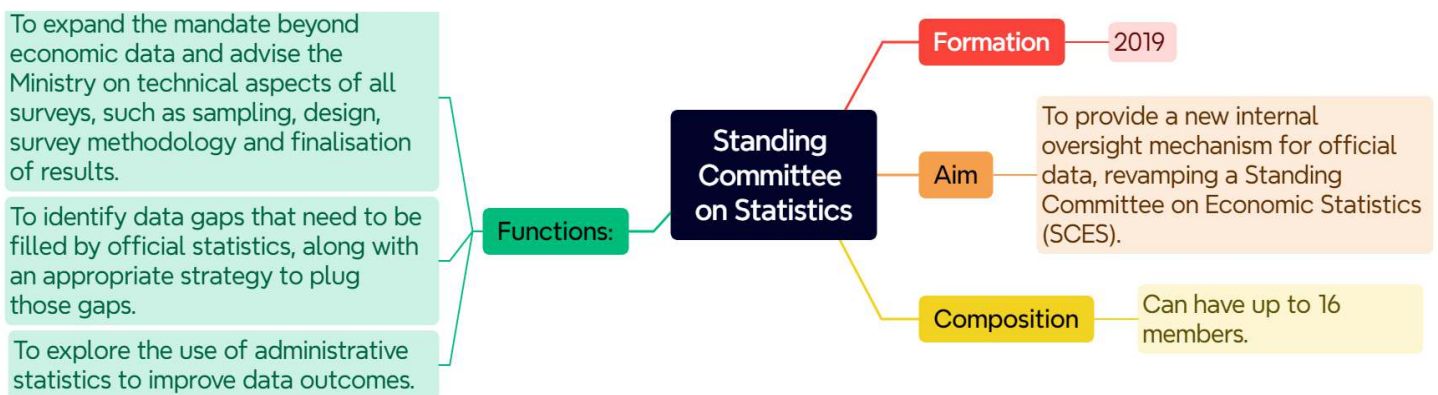
Union Home Minister was unanimously re-elected the Chairperson of the Parliamentary Committee on Official Language recently.



### 7. Delay in census: Govt dissolves Standing Committee on Statistics – The Hindu

#### Context »

A committee formed to oversee all statistical surveys by the Ministry of Statistics and Programme Implementation (MoSPI) has been dissolved by the government amid apparent concerns raised by some members over the delay in conducting the census.



## Environment

### 8. 40% Of Amazon Rainforest Most Vital To Climate Is Unprotected – Indian Express

#### Context »

Scientists agree that preserving the Amazon rainforest is critical to combating global warming, but new data published recently indicate huge swathes of the jungles that are vital to the world's climate remain unprotected.

## Amazon Rainforest

- **About:** Large tropical rainforests occupying the drainage basin of the Amazon River and its tributaries in northern South America
- **Area:** 6,000,000 square km (covers about 40% of Brazil's total area).
- **Climate:** Receive more than 200 cm rainfall annually
- **Temperatures:** 20°C - 35°C
- **Boundaries:**
  - **North:** Guiana Highlands
  - **West:** Andes Mountains
  - **South:** Brazilian central plateau
  - **East:** Atlantic Ocean
- **Significance:** Amazon contained 71.5 billion tonnes of carbon, roughly double the global carbon dioxide emissions for 2022. Amazon just barely absorbed more carbon than it released in the decade leading up to 2022.



## 9. Bhadra Tiger Reserve – Indian Express

### Context »

An aggressive new weed (*Mikania micrantha*) is rapidly spreading its tentacles in the Bhadra Tiger Reserve (BTR) and threatening its biodiversity.

### Bhadra Tiger Reserve (BTR)

- **Location:** Western Ghats region of Karnataka declared the 25th Project Tiger Reserve of India in 1998.
- **Rivers:** River Bhadra and its tributaries
- **Vegetation:** Dry deciduous, moist deciduous, shola, and semi-evergreen
- **Flora:** Teak, Rosewood, Mathi, Honne, Nandi, and many medicinal plants.
- **Fauna:** Tiger, Leopard, Leopard cat, Dhols, Indian Civet, ungulates like Gaur, Sambar, and Barking Deer.



Kills other plants by cutting out the light and smothering them

Climbs up other plants to reach the canopy for better sunlight.

Can inhibit seed germination and seedling growth of other plants.

Produces wind-dispersed seeds & can reproduce vegetatively through its roots, resulting in rapid and widespread invasion.

Impact on other plants:

### Mikania Micrantha

About

A perennial creeping climber known for its vigorous and rampant growth.

Distribution

A native of Central and South America & an invasive species in several parts of Southeast Asia, India and the Pacific Islands.

Introduction in India

In the 1940s as ground cover in tea plantations.

Climate

Grows where fertility, organic matter, soil moisture, and humidity are high.

## Sci. and Tech.

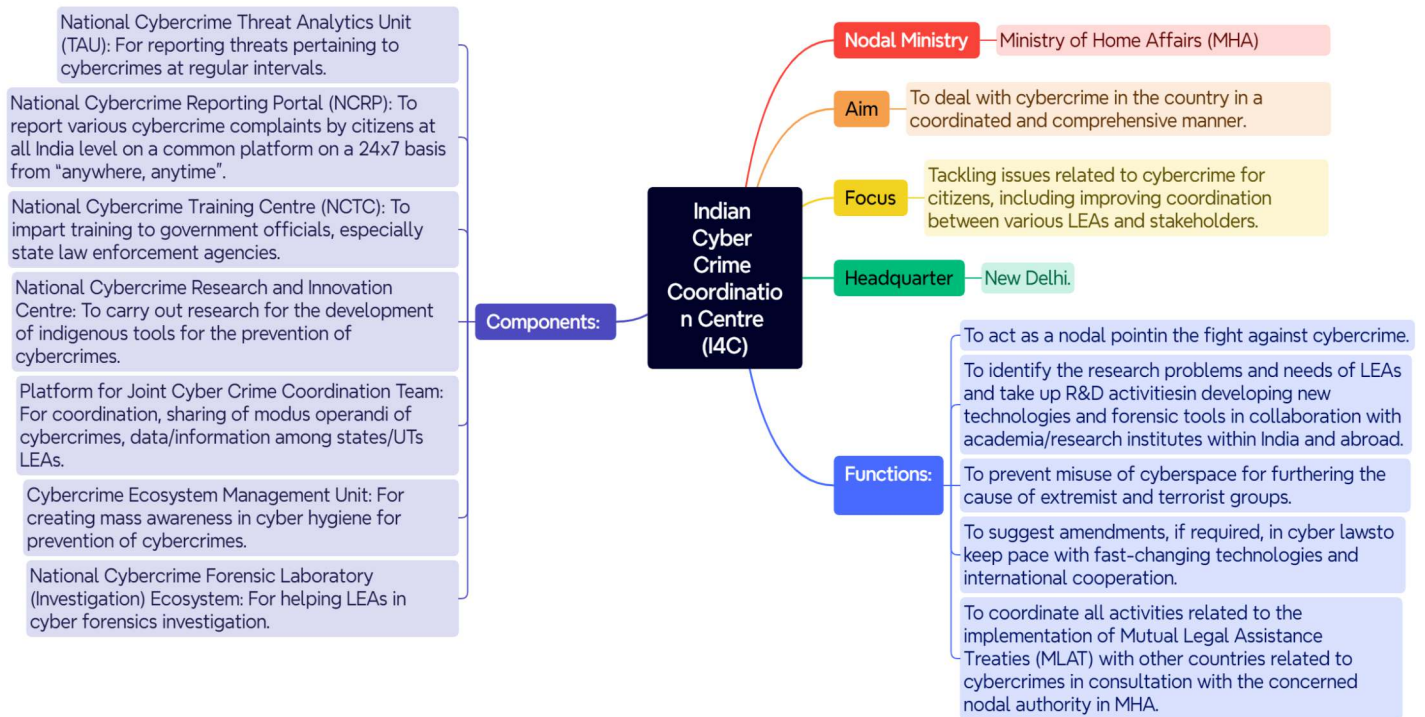
### 10. Amit Shah Launches Four Key Cybersecurity Initiatives – The Hindu

#### Context »

Union home minister recently inaugurated four cybersecurity initiatives in Delhi: the Cyber Fraud Mitigation Centre (CFMC), Cyber Commandos, Samanvaya portal, and Suspect Registry.

<p><b>Cyber Fraud Mitigation Centre (CFMC)</b></p>	<ul style="list-style-type: none"> <li>• <b>Establishment:</b> At the Indian Cybercrime Coordination Centre (I4C) in New Delhi</li> <li>• <b>Representatives:</b> Major banks, Financial Intermediaries, Payment Aggregators, Telecom Service Providers, IT Intermediaries, and States/UTs Law Enforcement Agencies (LEAs).</li> <li>• <b>Function:</b> Immediate action and seamless cooperation to tackle online financial crimes.</li> </ul>
<p><b>Samanvaya Platform (Joint Cybercrime Investigation Facilitation System)</b></p>	<ul style="list-style-type: none"> <li>• <b>About:</b> A web-based module to act as a One Stop Portal for data repository of cybercrime, data sharing, crime mapping, data analytics, cooperation, and coordination platform for LEAs across the country.</li> </ul>
<p><b>'Cyber Commandos' Program</b></p>	<ul style="list-style-type: none"> <li>• <b>About:</b> Under it, a special wing of trained 'Cyber Commandos' in States/ UTs and Central Police Organizations (CPOs) will be established to counter threats of the cyber security landscape in the country.</li> <li>• <b>Proper training:</b> Trained Cyber Commandos will assist States/UTs and Central Agencies in securing the digital space.</li> </ul>
<p><b>Suspect Registry</b></p>	<ul style="list-style-type: none"> <li>• <b>About:</b> A new initiative to strengthen fraud risk management by creating a registry of identifiers based on the National Cybercrime Reporting Portal in collaboration with banks and financial intermediaries.</li> </ul>





## 11. India's 1st Silicon Carbide manufacturing facility – The Hindu

### Context »

Odisha Chief Minister recently graced the ground-breaking ceremony of India's first silicon carbide manufacturing facility to be set up in Odisha at an investment of Rs 620 crore. The project will be developed by RIR Power Electronics Limited, a leader in India's semiconductor power electronics technology at the EMC Park, Infovalley, Bhubaneswar.

